

## Immediate chest X-ray for patients at risk of lung cancer presenting in primary care: randomised controlled feasibility trial

Neal, R; Barham, A; Bongard, E; Edwards, Rhiannon; Fitzgibbon, J; Griffiths, G; Willie, H; Hood, K; Parker, D; Porter, C; Prout, H; Roberts, K; Rogers, T; Thomas-Jones, E; Tod, A; Yeo, Seow Tien; Hurt, C

**British Journal of Cancer**

DOI:

[10.1038/bjc.2016.414](https://doi.org/10.1038/bjc.2016.414)

Published: 31/01/2017

[Cyswllt i'r cyhoeddiad / Link to publication](#)

*Dyfyniad o'r fersiwn a gyhoeddwyd / Citation for published version (APA):*

Neal, R., Barham, A., Bongard, E., Edwards, R., Fitzgibbon, J., Griffiths, G., Willie, H., Hood, K., Parker, D., Porter, C., Prout, H., Roberts, K., Rogers, T., Thomas-Jones, E., Tod, A., Yeo, S. T., & Hurt, C. (2017). Immediate chest X-ray for patients at risk of lung cancer presenting in primary care: randomised controlled feasibility trial. *British Journal of Cancer*, 116(3), 293-302. <https://doi.org/10.1038/bjc.2016.414>

### Hawliau Cyffredinol / General rights

Copyright and moral rights for the publications made accessible in the public portal are retained by the authors and/or other copyright owners and it is a condition of accessing publications that users recognise and abide by the legal requirements associated with these rights.

- Users may download and print one copy of any publication from the public portal for the purpose of private study or research.
- You may not further distribute the material or use it for any profit-making activity or commercial gain
- You may freely distribute the URL identifying the publication in the public portal ?

### Take down policy

If you believe that this document breaches copyright please contact us providing details, and we will remove access to the work immediately and investigate your claim.

**Keywords:** lung cancer; early diagnosis; health economics; chest X-ray; NICE; RCT; symptoms; cough

# Immediate chest X-ray for patients at risk of lung cancer presenting in primary care: randomised controlled feasibility trial

Richard D Neal<sup>\*1</sup>, Allan Barham<sup>2</sup>, Emily Bongard<sup>3</sup>, Rhiannon Tudor Edwards<sup>4</sup>, Jim Fitzgibbon<sup>2</sup>, Gareth Griffiths<sup>5</sup>, Willie Hamilton<sup>6</sup>, Kerenza Hood<sup>7</sup>, Annmarie Nelson<sup>8</sup>, David Parker<sup>9</sup>, Cath Porter<sup>10</sup>, Hayley Prout<sup>8</sup>, Kirsty Roberts<sup>11</sup>, Trevor Rogers<sup>12</sup>, Emma Thomas-Jones<sup>13</sup>, Angela Tod<sup>14</sup>, Seow Tien Yeo<sup>4</sup> and Chris N Hurt<sup>10</sup>

<sup>1</sup>Leeds Institute for Health Sciences, University of Leeds, Leeds LS2 9NL, UK; <sup>2</sup>Patient representative, Cardiff, UK; <sup>3</sup>MRC Lifecourse Epidemiology Unit, University of Southampton, Southampton, UK; <sup>4</sup>Centre for Health Economics and Medicines Evaluation, Bangor University, Gwynedd, UK; <sup>5</sup>Southampton Clinical Trials Unit, University of Southampton, Southampton, UK; <sup>6</sup>University of Exeter Medical School, Exeter, UK; <sup>7</sup>Centre for Trials Research, Cardiff University, Cardiff, UK; <sup>8</sup>Marie Curie Palliative Care Research Centre School of Medicine, Cardiff University, Cardiff, UK; <sup>9</sup>Betsi Cadwaladr University Health Board, Wrexham Maelor Hospital, Wrexham, UK; <sup>10</sup>Wales Cancer Trials Unit, Centre for Trials Research, Cardiff University, Cardiff, UK; <sup>11</sup>School of Social and Community Medicine, University of Bristol, Bristol, UK; <sup>12</sup>Doncaster Royal Infirmary, Doncaster and Bassetlaw NHS Foundation Trust, Doncaster, UK; <sup>13</sup>South East Wales Trials Unit, Centre for Trials Research, Cardiff University, Cardiff, UK and <sup>14</sup>Sheffield University, Sheffield, UK

**Background:** Achieving earlier stage diagnosis is one option for improving lung cancer outcomes in the United Kingdom. Patients with lung cancer typically present with symptoms to general practitioners several times before referral or investigation.

**Methods:** We undertook a mixed methods feasibility individually randomised controlled trial (the ELCID trial) to assess the feasibility and inform the design of a definitive, fully powered, UK-wide, Phase III trial of lowering the threshold for urgent investigation of suspected lung cancer. Patients over 60, with a smoking history, presenting with new chest symptoms to primary care, were eligible to be randomised to intervention (urgent chest X-ray) or usual care.

**Results:** The trial design and materials were acceptable to GPs and patients. We randomised 255 patients from 22 practices, although the proportion of eligible patients who participated was lower than expected. Survey responses (89%), and the fidelity of the intervention (82% patients X-rayed within 3 weeks) were good. There was slightly higher anxiety and depression in the control arm in participants aged >75. Three patients (1.2%) were diagnosed with lung cancer.

**Conclusions:** We have demonstrated the feasibility of individually randomising patients at higher risk of lung cancer, to a trial offering urgent investigation or usual care.

There were 44 888 new cases of lung cancer in the United Kingdom In 2012, making it the second most common cancer, representing 13% of all new cancers (Cancer Research UK, 2015). In the same year, there were 35 371 deaths; 10-year survival is 5%. Options for improving outcomes in lung cancer are either by diagnosing at an

earlier stage, potentially allowing curative surgery, or by improving treatments. Options for earlier stage diagnosis include: screening programmes with low-dose CT for people at high risk (National Lung Screening Trial Research Team, 2013); targeted public awareness campaigns to encourage people with symptoms to

\*Correspondence: Professor RD Neal; E-mail: r.d.neal@leeds.ac.uk

Received 16 May 2016; revised 31 October 2016; accepted 16 November 2016; published online 10 January 2017

© 2017 Cancer Research UK. All rights reserved 0007–0920/17

present earlier (Athey *et al*, 2012; Ironmonger *et al*, 2015); GPs investigating higher risk patients with symptoms more quickly (as in this trial); allowing GPs access to low-dose CT (Guldbbrandt *et al*, 2014); and the development of predictive biomarkers. There is systematic review evidence that, for lung cancer, the evidence that timelier diagnosis is associated with better outcomes is equivocal (Neal *et al*, 2015a); however the higher quality studies reported in this review do show an association (Brocken *et al*, 2012; Murai *et al*, 2012; Tørring *et al*, 2013), suggesting that there is merit in expediting the diagnosis of people presenting symptomatically.

The diagnosis of lung cancer in general practice can be complex and difficult (Neal *et al*, 2015b) and can therefore be 'easily missed' (Neal *et al*, 2014). The symptom signature of lung cancer is variable (Shim *et al*, 2014), and many patients consult with their general practitioner several times before referral or investigation (Lyrtzopoulos *et al*, 2012; Birt *et al*, 2014). In England and Wales, diagnostic activity for cancer is guided by the National Institute for Health and Care Excellence (NICE); their 2005 guidelines (NICE, 2005) were updated in 2015 (NICE, 2015). In this trial we hypothesised that an intervention to lower the NICE symptom threshold for investigation 'extra-NICE' may improve clinical outcomes in lung cancer and the cost-effectiveness of lung cancer diagnosis. Our definition of 'extra-NICE' (as compared with NICE, 2005 as these were in place at the time of the trial) was urgent referral for a chest X-ray for patients aged 60 years or over presenting in general practice with a new or altered cough of any duration, increased breathlessness, or wheezing (whether or not associated with purulent sputum), and who were either current smokers or ex-smokers with a 10 or more pack-years of smoking. At the time of the trial, the NICE (2005) guidelines recommended chest X-ray after 3 weeks of symptoms in these patients. The new guidelines (NICE, 2015) were published after the trial closed, recommend chest X-ray within 2 weeks in people aged 40 and over if they have two or more of selected unexplained symptoms (cough, fatigue, shortness of breath, chest pain, weight loss, appetite loss), or one of these if they have ever smoked.

This trial aimed to assess the feasibility and inform the design of a definitive, fully powered, UK-wide, Phase III clinical trial of a change to the NICE guidelines for urgent investigation of suspected lung cancer in patients aged over 60. In particular, this paper reports the results and lessons drawn from the development work and the mixed methods feasibility trial that set out to determine: the acceptability of trial design and materials; the training and recruitment of practices; the recruitment and randomisation of patients; appropriate methods for collection of wider clinical and health economics data in a full trial; and the views of participants and non-participants on recruitment and randomisation, and health-care professionals. The trial utilises a combination of workshop, health economics, quality of life, qualitative, and quantitative methods, examining the feasibility of a full trial.

## MATERIALS AND METHODS

ELCID (Early Lung Cancer Investigation and Diagnosis) was a randomised, parallel group, unblinded, feasibility trial carried out in general practices in Wales and Yorkshire. A Working Group was formed before recruitment and randomisation with key stakeholders. It aimed to identify the best way to train GPs to identify and recruit eligible patients into the trial, and to identify the most effective method of presenting the trial (and randomisation) to patients. The outputs from this Working Group informed some of the practicalities of recruiting practices and participants and maximising data collection.

Study design, randomisation, sample size considerations, data collection procedures, and planned statistical methods have been published elsewhere (Hurt *et al*, 2013). Briefly, patients aged over 60 years, who were either smokers or ex-smokers with 10 or more pack-years of smoking history, and who presented at a general practice with a new or altered cough of any duration, or increased breathlessness or wheezing (whether or not associated with purulent sputum), were invited to participate. Patients who qualified for urgent referral for chest X-ray under NICE, 2005 guidelines, or who had had a chest X-ray or CT scan of the chest in the last 3 months, or who needed a chest X-ray within next 3 weeks, or who had previously been diagnosed with cancer and who had a life expectancy of less than 1 year, were ineligible.

Initially, all general practices in the four Health Boards in South east Wales were invited to participate in the trial. In addition, six practices in Yorkshire were recruited by the local research network (as were a further six practices from north Wales halfway through the trial – see later). Patients were identified either at presentation or, in some practices where resources existed to do so, by looking through the records of the previous week's consultations. Patients identified at presentation were introduced to the trial and invited to consent or given a future appointment at which eligibility could be confirmed and consent could be taken. Patients identified through medical records were invited to make an appointment to discuss the trial, eligibility, and consent.

The trial aimed to assess:

- Key design parameters (prevalence of 'extra-NICE' symptoms, trial consent rate, and lung cancer rate).
- Whether the intervention caused increased anxiety or depression
- The outcomes of the chest X-rays.
- The acceptability of trial procedures to participants and recruiters.
- The best ways of collecting trial data (patient recall, GP records, and routine data sets).

The study was developed on behalf of the NCRI Primary Care Clinical Studies Group, funded by the UK National Awareness and Early Diagnosis Initiative (NAEDI), sponsored by Bangor University, and coordinated by the Wales Cancer Trials Unit and South East Wales Trials Unit at Cardiff University. The study was approved by a UK multicentre ethics committee and carried out in accordance to the declaration of Helsinki and all UK regulatory requirements.

Those who were eligible and provided written informed consent were then individually randomised (1:1) to either an urgent chest X-ray or usual care (NICE, 2005). Patients were randomised and informed of their allocation before being given a suite of questionnaires to complete (Box 1). The same questionnaires were posted to patients 2 months later. Twelve months after randomisation, general practices were contacted to provide follow-up information on the outcomes of any chest X-rays, health service resource use, and clinical outcomes. Data from the Welsh Cancer Intelligence and Surveillance Unit (WCISU) were used to verify the lung cancer data provided by general practices at 12 months (Wales only). The CTU staff maintained regular contact

### Box 1. Post randomisation and 2 months questionnaires

Hospital Anxiety and Depression Scale (HADS) (Zigmond and Snaith, 1983).  
Client Service Receipt Inventory (CSRI) (Beecham and Knapp, 1999; Ridyard and Hughes, 2010; Ridyard *et al*, 2012).  
ICEpop CAPability measure for Older people (ICECAP-O) (Coast *et al*, 2008).  
EuroQol 5 Dimensional Health State Questionnaire (EQ-5D-3L) (EuroQol Group, 1990; EuroQol, 2015).

with the practices throughout the study. Full excess treatment and service support costs were provided. In order to incentivise practices further, there were occasional prizes for practices for best or most improved recruitment.

**Randomisation.** Randomisation took place centrally via the Bristol Randomised Trials Collaboration using either an automated telephone or a secure online service. Participants were randomised using minimisation with a random element (80:20) stratified by general practice, age (<75, ≥75), and chronic obstructive pulmonary disease diagnosis.

**Statistical analysis.** The sample size was based on modelling work using the CAPER-lung database, which contains all primary-care consultations, symptoms, and investigations in the 2 years before diagnosis for a 5-year cohort of 247 lung cancer cases (Hamilton *et al*, 2005; Barrett and Hamilton, 2008). We estimated that 0.77% of practice patients would be eligible for the trial in a year, that as many as 70% of those may be recruited, and of those recruited, 2.4% would develop lung cancer (Hurt *et al*, 2013). The trial aimed to recruit a sample size of 386 for reasonable precision around these estimates: the proportion of eligible patients in United Kingdom practices per year (0.77%, 95% confidence intervals (CIs): 0.70–0.83%) and of those recruited, the proportion developing lung cancer within 12 months (2.4%, 95% CIs: 0.9–3.9%).

Data were analysed using the STATA SE 14 statistical package (StataCorp LP, 4905 Lakeway Drive, TX, USA) according to intention-to-treat. All analyses were pre-specified *a priori*. When determining the lung cancer data (proportion diagnosed, stage of lung cancer, performance status, and radical treatment) the WCISU data set was taken as correct if it differed from the general practice data. Recruitment rates were assessed by: Primary Care Research Incentive Scheme (PiCRIS) level – a Welsh Governmental funding and support scheme for general practices (NHS Wales, 2014); practice size; and months open to recruitment. We compared the completion rates of all questionnaires by trial arm, using  $\chi^2$ -tests. Subgroup analyses of completion of all questionnaires was also assessed by age (<75 vs ≥75 years), gender, post-randomisation anxiety, ethnicity, and smoking status. Post-randomisation anxiety and depression median scores were compared using Mann–Whitney tests. Subgroup analyses of anxiety and depression by age (<75 and ≥75 years), gender, and smoking status (current or ex-smoker) using Mann–Whitney tests were also performed. Differences in anxiety/depression scores between arms at 2 months post randomisation were assessed using multiple linear regression, with treatment arm and post-randomisation score as covariates in a base model. Subgroup analyses were performed by:

- repeating this model by age (<75 or ≥75), gender, and smoking history (current or ex).
- adding age, gender, or smoking history to the base model together with an interaction with treatment arm.

To ensure the validity of the linear regressions, checks were made for evidence of non-normality of residuals using Shapiro–Wilk tests and kernel density, normal probability and normal quantile plots, and heteroscedasticity using residuals vs. fits plots. No adjustment was made for multiple testing.

**Health economics.** Health economic data were collected post randomisation and at 2 months as shown in Box 1. The health service use information from the patients was compared with data about resource use collected from the GPs to ascertain the most appropriate method of capturing these data in the full trial. Data were analysed using the IBM SPSS Statistics Version 22 statistical package (IBM Corp., Armonk, NY, USA). The agreement analysis examined the level of agreement between the patient and GP as information sources. Data included: investigations ('Other' chest

X-ray (i.e., chest X-ray not including the one received on the ELCID trial as part of the intervention), CT scan, MRI scan, and PET-CT scan) performed on patients by 2 months. The Kappa ( $\kappa$ ) statistic was employed to test investigation use agreement (Shoukri, 2015). The Landis and Koch standard scales for strength of agreement for the  $\kappa$  coefficient were applied (Landis and Koch, 1977).

## RESULTS

**Practice and patient recruitment.** The acceptability of the trial design was determined by the Working Group, and was reflected in the successful initial recruitment in Wales and Yorkshire. Twenty-eight practices were recruited from Wales and six from Yorkshire. However, three Welsh sites withdrew from the study without recruiting a participant. Twenty-two of the remaining 31 practices randomised 255 participants between 8 November 2012 and 9 April 2014. The CONSORT flow diagram is shown in Figure 1.

The acceptability of the trial design was determined by the Working Group, and was reflected in the successful initial recruitment in Wales and Yorkshire. A total of 28 practices were initially recruited (22 South east Wales and 6 in Yorkshire), of which three later withdrew, without recruiting any patients. Halfway through the trial, an additional six practices were recruited from north Wales by the local research network to boost recruitment. Twenty-two of the remaining 31 practices randomised 255 participants between 8 November 2012 and 9 April 2014. Nine sites failed to recruit a single participant. Those that failed to recruit cited lack of resources or lack of eligible patients as reasons. The CONSORT flow diagram is shown in Figure 1.

Recruitment screening log data were poorly completed generally, but two practices provided reliable data, based on agreement between participation recorded on screening logs and central randomisation data. From these two practices, the prevalence of the trial eligibility criteria was calculated as 0.75% of practice registrations per year (214 eligible people per year from a combined registered population of 28 502; 95% CI 0.65–0.86%). In addition, from these two sites, the proportion of eligible patients who agreed to participate was 74 out of 223 (33.2%; 95% CI 27.0–39.8%).

The recruitment of participants by practice size, known research activity (PiCRIS scheme – Welsh practices only), and number of months open to recruitment is shown in Table 1. This shows that: practice size had little overall effect on the number of randomised patients per 1000 per year; the PiCRIS level of the practice had little effect on the number of randomised patients per 1000 per year, other than 'sessional' (the highest level of participation) practices having a higher randomisation rate; and that practices which were open to recruitment for shorter periods of time had a higher rate of recruitment.

**Baseline comparability between the groups.** The breakdown of the variables, overall, and by trial arm, are shown in Table 2. This shows that the demographics (gender, age, ethnicity, duration and highest level of education, and economic situation), presenting symptoms, pre-existing co-morbidity, and numbers of recent chest X-rays had similar distributions in each trial arm.

**Fidelity of the intervention.** About 113 out of 127 (89.0%) patients in the intervention arm received a total of 148 chest X-rays within 12 months. Of these, 88 patients (69.3%) had their first X-ray within 7 days, 100 (78.7%) within 14 days, and 104 (81.9%) within 21 days. Forty-three out of 128 (33.6%) participants in the control arm also received a total of 50 chest X-rays within 12 months. Of these, 3 patients (2.3%) had their first X-ray within 7 days, 10 (7.8%) within 14 days, and 13 (10.2%) within 21 days. The median times to chest X-ray in the intervention and control groups were 3 days (interquartile range (IQR) 1–7), and 71 days (IQR 17–233, respectively). In the intervention arm, 10 (7.9%)

patients had repeat chest X-rays within 3 months (8 had 1 repeat, 2 had 2 repeats with <3 months between each). In the control arm, 3 (2.8%) patients had repeat chest X-rays (1 patient had 1 repeat, 2 had 2 repeats with <3 months between each).

**Significant adverse events.** Three patients in the control arm died, one due to lung cancer (52 days post randomisation), one due to myocardial infarction (178 days post randomisation), and one due to cardiac arrest (216 days post randomisation). One patient in the

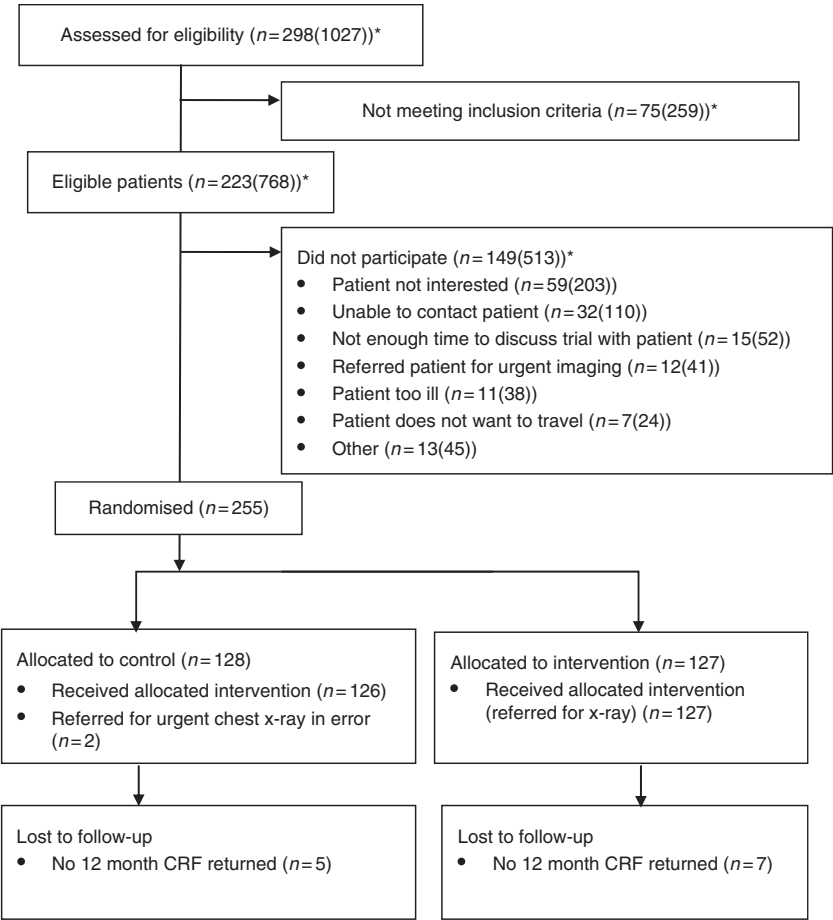


Figure 1. Consort diagram. \*Box shows actual numbers from complete screening data from two sites. Figure in square brackets is the overall prediction using the numbers from the two sites as an estimate to predict likely screening at other sites that recruited at least one patient.

| Table 1. Breakdown of recruitment by practice size, known research activity (PiCRIS scheme), number of months open to recruitment |               |                     |   |     |                   |
|---|---------------|---------------------|---|-----|-------------------|
|   |               |                     | Participants randomised                     |     |                   |
|   |               | Number of practices | Mean number of patients per practice (s.d.) | N   | Per 1000 per year |
| Practice size (patients)  |               |                     |   |     |                   |
| 1st quartile  | up to 5252    | 8                   | 3906.4 (1392.9)                             | 35  | 0.92              |
| 2nd quartile  | 5253–8301     | 7                   | 7221.9 (783.6)                              | 66  | 1.04              |
| 3rd quartile  | 8302–12 037   | 8                   | 9911.4 (1037.2)                             | 36  | 0.38              |
| 4th quartile  | 12 038–21 433 | 8                   | 15 128.6 (3140.0)                           | 118 | 1.18              |
| Research activity   |               |                     |   |     |                   |
| PiCRIS level 1  |               | 4                   | 8724 (3656.1)                               | 19  | 0.45              |
| PiCRIS level 2  |               | 4                   | 10 786.5 (4640.6)                           | 19  | 0.46              |
| Sessional   |               | 6                   | 12 877.5 (5409.0)                           | 154 | 2.15              |
| None <sup>a</sup>   |               | 17                  | 7459.8 (3840.8)                             | 63  | 0.41              |
| Months open   |               |                     |   |     |                   |
| 1st quartile  | up to 9.3     | 9                   | 9693 (5789.5)                               | 94  | 1.48              |
| 2nd quartile  | > 9.3–14.2    | 9                   | 8166.6 (3090.5)                             | 66  | 0.77              |
| 3rd quartile  | > 14.2–16.2   | 6                   | 9645.7 (5887.9)                             | 55  | 0.71              |
| 4th quartile  | > 16.2–18.2   | 7                   | 9073.4 (4074.8)                             | 40  | 0.42              |
| Abbreviation: PiCRIS = Primary Care Research Incentive Scheme.  |               |                     |   |     |                   |
| <sup>a</sup> Includes English centres where PiCRIS funding is not available.  |               |                     |   |     |                   |



**Table 2. Baseline demographics, co-morbidity, symptoms, and previous chest X-rays of trial participants**

|  | Control          |      | Intervention     |      | Overall          |       |
|--|------------------|------|------------------|------|------------------|-------|
|  | <i>n</i>         | (%)  | <i>n</i>         | (%)  | <i>N</i>         | (%)   |
| Randomised – <i>n</i>                  | 128              | 50.2 | 127              | 49.8 | 255              | 100.0 |
| Gender                                 |                  |      |                  |      |                  |       |
| Male                                   | 64               | 50.0 | 66               | 52.0 | 130              | 51.0  |
| Female                                 | 64               | 50.0 | 61               | 48.0 | 125              | 49.0  |
| Age                                    |                  |      |                  |      |                  |       |
| Median (IQR)                           | 67.3 (64.5–72.8) |      | 67.9 (64.3–73.2) |      | 67.5 (64.3–73.2) |       |
| ≥75 years old                          | 23               | 18.0 | 26               | 20.5 | 49               | 19.2  |
| <75                                    | 105              |      | 101              |      | 206              |       |
| Identification of eligibility          |                  |      |                  |      |                  |       |
| Routine consultation                   | 102              | 79.7 | 101              | 79.5 | 203              | 79.6  |
| COPD clinic                            | 1                | 0.8  | 3                | 2.4  | 4                | 1.6   |
| Review of patient notes                | 25               | 19.5 | 23               | 18.1 | 48               | 18.8  |
| Ethnicity                              |                  |      |                  |      |                  |       |
| White                                  | 127              | 99.2 | 126              | 99.2 | 253              | 99.2  |
| Other                                  | 0                | 0.0  | 1                | 0.8  | 1                | 0.4   |
| Missing                                | 1                | 0.8  | 0                | 0.0  | 1                | 0.4   |
| Years of f/t education from age 5      |                  |      |                  |      |                  |       |
| Median (IQR)                           | 10 (10–11.5)     |      | 10 (10–11)       |      | 10 (10–11)       |       |
| Missing                                | 0                | 1    | 1                |      |                  |       |
| Highest education level                |                  |      |                  |      |                  |       |
| University                             | 12               | 9.4  | 6                | 4.7  | 18               | 7.1   |
| Professional training                  | 25               | 19.5 | 24               | 18.9 | 49               | 19.2  |
| Secondary school                       | 86               | 67.2 | 93               | 73.2 | 179              | 70.2  |
| Did not attend secondary school        | 5                | 3.9  | 3                | 2.4  | 8                | 3.1   |
| Missing                                | 0                | 0.0  | 1                | 0.8  | 1                | 0.4   |
| Economics                              |                  |      |                  |      |                  |       |
| Find it a strain to get by             | 10               | 7.8  | 11               | 8.7  | 21               | 8.2   |
| Have to be careful about money         | 44               | 34.4 | 45               | 35.4 | 89               | 34.9  |
| Able to manage without much difficulty | 40               | 31.3 | 41               | 32.3 | 81               | 31.8  |
| Quite comfortably off                  | 30               | 23.4 | 24               | 18.9 | 54               | 21.2  |
| Prefer not to answer                   | 4                | 3.1  | 6                | 4.7  | 10               | 3.9   |
| Co-morbidity                           |                  |      |                  |      |                  |       |
| At least one co-morbidity              | 61               | 47.7 | 76               | 59.8 | 137              | 53.7  |
| Chronic pulmonary disease              | 37               | 60.7 | 41               | 53.9 | 78               | 56.9  |
| Median Charlson score (IQR)            | 3 (2–4)          |      | 3 (2–4)          |      | 3 (2–4)          |       |
| Previous CXRs in last 12 months        |                  |      |                  |      |                  |       |
| Had one                                | 22               | 17.2 | 21               | 16.5 | 43               | 16.9  |
| Not had one                            | 106              | 82.8 | 106              | 83.5 | 212              | 83.1  |
| Smoking history                        |                  |      |                  |      |                  |       |
| Current smoker                         | 62               | 48.4 | 59               | 46.5 | 121              | 47.5  |
| Ex-smoker                              | 66               | 51.6 | 68               | 53.5 | 134              | 52.5  |
| Pack-years – median (IQR)              | 30 (20–45)       |      | 31 (20–45)       |      | 3 (20–45)        |       |
| Presenting symptoms                    |                  |      |                  |      |                  |       |
| Cough only                             | 35               | 27.3 | 38               | 29.9 | 73               | 28.6  |
| Cough + other symptoms                 | 60               | 46.9 | 60               | 47.2 | 120              | 47.1  |
| Breathlessness ± others                | 7                | 5.5  | 3                | 2.4  | 10               | 3.9   |
| Missing                                | 26               | 20.3 | 26               | 20.5 | 52               | 20.4  |

Abbreviations: COPD = chronic obstructive pulmonary disease; CXR = Chest X-ray; IQR = interquartile range.

No missing data except where stated.

intervention arm died, due to lung cancer; time to death was 95 days. None of these events were thought to be related to study procedures.

#### Survey responses and Hospital Anxiety and Depression Scores.

Survey responses are shown in Table 3. This shows that completion of all tools post randomisation was good (89.4%), and equal in both the groups. Completion of tools at 2 months was also similar between the two groups, with just less than two-thirds completion. There was no evidence for differences in completion between arms within subgroups based on age, sex, post-randomisation anxiety, or smoking history (data not presented). Hospital Anxiety and Depression Scores are also presented in Table 3. There was no evidence of a difference in

post-randomisation anxiety scores between trial arms (median (IQR): 6 (3–8) in control vs 5 (3–9) in intervention,  $z=0.32$ ;  $P=0.75$ ) or between arms by subgroups based on age, sex, or smoking history ( $P\geq 0.35$ ). Similarly, there was no evidence for a difference in post-randomisation depression between arms (median (IQR): 6 (3–8) in control vs 5 (3–9) in intervention,  $z=-0.12$ ;  $P=0.91$ ) or between arms by subgroups based on age, sex, or smoking history ( $P\geq 0.56$ ). The 2-month results presented in Table 3 suggest no difference in either anxiety or depression between trials arms except when performing subgroup analyses using age. For both anxiety and depression, the model that included age as a covariate had significant age-trial arm interaction terms ( $P=0.02$  and  $0.05$ , respectively).

**Table 3. Survey response at baseline and 2 months, and Hospital Anxiety and Depression Scores – 2-month questionnaires**

|   | Control |              | Intervention |              | Overall |      | $\chi^2$ -test statistic ( $\chi^2$ )             | $\chi^2$ P-value     |                                      |
|---|---------|--------------|--------------|--------------|---------|------|---|----------------------|--------------------------------------|
|   | n       | %            | n            | %            | n       | %    |   |                      |                                      |
| Baseline data returned – n (%)                | 128     | 50.2         | 127          | 49.8         | 255     | 100  |   |                      |                                      |
| <b>Baseline questionnaires</b>                |         |              |              |              |         |      |   |                      |                                      |
| All questionnaires                            | 118     | 92.2         | 110          | 86.6         | 228     | 89.4 | 2.09  | 0.15                 |                                      |
| ICECAP  | 123     | 96.1         | 121          | 95.3         | 244     | 95.7 | 0.10  | 0.75                 |                                      |
| EQ-5D   | 124     | 96.9         | 123          | 96.9         | 247     | 96.9 | <0.001  | 0.99                 |                                      |
| CSRI  | 121     | 94.5         | 111          | 87.4         | 232     | 91   | 3.95  | 0.05                 |                                      |
| HADS  | 125     | 97.7         | 122          | 96.1         | 247     | 96.9 | 0.53  | 0.47                 |                                      |
| <b>2-month questionnaires</b>                 |         |              |              |              |         |      |   |                      |                                      |
| All 2-month questionnaires                    | 82      | 64.1         | 84           | 66.1         | 166     | 65.1 | 0.12  | 0.73                 |                                      |
| ICECAP  | 84      | 65.6         | 93           | 73.2         | 177     | 69.4 | 3.02  | 0.22                 |                                      |
| EQ-5D   | 85      | 66.4         | 92           | 72.4         | 177     | 69.4 | 2.32  | 0.31                 |                                      |
| CSRI  | 82      | 64.1         | 85           | 66.9         | 167     | 65.5 | 1.33  | 0.51                 |                                      |
| HADS  | 85      | 66.4         | 92           | 72.4         | 177     | 69.4 | 2.32  | 0.31                 |                                      |
| <b>HADS score from 2-month questionnaires</b> |         |              |              |              |         |      |   |                      |                                      |
|   | n       | Median (IQR) | n            | median (IQR) |         |      | Linear regression test statistic (t) <sup>a</sup> | P-value <sup>a</sup> | P-value for interaction <sup>b</sup> |
| Anxiety                                       |         |              |              |              |         |      |   |                      |                                      |
| All patients                                  | 85      | 7 (4–9)      | 92           | 6 (3–9.5)    |         |      | – 0.7   | 0.49                 |                                      |
| Age <75                                       | 73      | 7 (4–8)      | 71           | 6 (3–10)     |         |      | 0.3   | 0.76                 | 0.02                                 |
| Age ≥75                                       | 12      | 7.5 (4.5–9)  | 21           | 4 (3–7)      |         |      | – 2.97  | 0.006                |                                      |
| Male  | 39      | 6 (3–8)      | 51           | 6 (3–8)      |         |      | 0.09  | 0.93                 | 0.52                                 |
| Female  | 46      | 7 (5–9)      | 41           | 5 (3–11)     |         |      | – 1.01  | 0.32                 |                                      |
| Current smoker                                | 40      | 7 (5–8)      | 40           | 6 (4–12)     |         |      | 0.39  | 0.7                  | 0.23                                 |
| Ex-smoker                                     | 45      | 6 (3–9)      | 52           | 5 (3–7)      |         |      | – 1.18  | 0.24                 |                                      |
| Depression                                    |         |              |              |              |         |      |   |                      |                                      |
| All patients                                  | 85      | 7 (4–9)      | 92           | 6 (3–9.5)    |         |      | – 0.59  | 0.56                 |                                      |
| Age <75                                       | 73      | 7 (4–8)      | 71           | 6 (3–10)     |         |      | 0.26  | 0.8                  | 0.05                                 |
| Age ≥75                                       | 12      | 7.5 (4.5–9)  | 21           | 4 (3–7)      |         |      | – 2.67  | 0.013                |                                      |
| Male  | 39      | 6 (3–8)      | 51           | 6 (3–8)      |         |      | 0.21  | 0.83                 | 0.46                                 |
| Female  | 46      | 7 (5–9)      | 41           | 5 (3–11)     |         |      | – 0.99  | 0.33                 |                                      |
| Current smoker                                | 40      | 7 (5–8)      | 40           | 6 (4–12)     |         |      | 0.41  | 0.69                 | 0.31                                 |
| Ex-smoker                                     | 45      | 6 (3–9)      | 52           | 5 (3–7)      |         |      | – 1.07  | 0.29                 |                                      |

Abbreviations: CSRI = Client Service Receipt Inventory; EQ-5D = EuroQol 5 Dimensional Health State Questionnaire; HADS = Hospital Anxiety and Depression Scores; ICECAP = ICEpop CAPability measure for Older people; IQR = interquartile range

<sup>a</sup>Base model in subgroup.

<sup>b</sup>Base model plus subgroup variable plus subgroup treatment arm interaction in all patients.

There was a significantly higher anxiety (median (IQR): 7.5 (4.5–9) vs 4 (3–7),  $t = -2.97$ ;  $P = 0.006$ ) and depression (7.5 (4.5–9) vs 4 (3–7),  $t = -2.67$ ;  $P = 0.013$ ) score in the control arm in the  $\geq 75$  age group although the number of participants in this subgroup was small ( $n = 33$ ).

**Chest X-ray outcomes, cancer diagnoses, other diagnostic investigations, and other diagnoses.** Table 4 and Figure 2 show the outcomes of the chest X-rays. There were more normal results in the intervention arm (105 (70.9%) vs 25 (50%)) but more patients were found to have at least one abnormality in the intervention arm (31 (25.8%) vs 20 (16.3%)). In the intervention arm, four chest X-rays from three participants were suspicious of lung cancer (3 of which led to CT scans within 3 weeks of X-ray, 2 of which led to a diagnosis of lung cancer) compared with one in the control arm (which led to a diagnosis of lung cancer within 34 days of randomisation without CT scan); 20 days of chest X-ray. Data from WCISU confirmed the three lung cancer diagnoses reported from primary care. In the intervention arm, one was stage IA, adenocarcinoma, WHO performance status 0, diagnosis 58 days post randomisation, and the participant received radical treatment. The other was stage III, missing tumour type, performance status 3, diagnosis 80 days post randomisation, and the participant received no radical treatment. In the control arm, this was a small cell tumour, stage 4 at diagnosis, performance status 2, diagnosis 39 days post randomisation and the participant received no radical treatment. Thus, 3 out of 256, that is,

1.2% (95% CIs: 0.2–3.4%) of trial participants were diagnosed with lung cancer. A flow chart showing pathways to other outcomes from normal and abnormal chest X-rays, including further investigations for both trial arms is shown in Figure 2.

**Exploration of the most appropriate measure of collecting health resource use data – agreement analysis results.** Table 5 shows the results of agreement between the resource use data self-reported by the patients and the resource use data collected routinely from the GP records. Overall there was a high degree of agreement between patients' self-reported data and routine-based health-care resource use data, with values ranging from 67.67 to 97.60%. Agreement was the highest for PET-CT scan and lowest for 'other' chest X-ray. However, the strength of agreement was considerably below average, ranging from fair agreement ( $\kappa = 0.32$ , s.e. 0.18, 95% CI – 0.03–0.66) for CT scan, to slight agreement ( $\kappa = 0.20$ , s.e. 0.06, 95% CI 0.08–0.31) for 'other' chest X-ray. No results of kappa are presented for either MRI or PET-CT; this is because no comparison was possible as none were reported. The full findings from the health economics analysis will be reported elsewhere.

## DISCUSSION

**Summary of main findings.** This feasibility trial has achieved its targets in terms of assessing: key design parameters, impact on

anxiety/depression, chest X-ray outcomes, the acceptability of trial procedures, and the best ways of collecting trial data. It supports the feasibility of conducting a Phase III trial. Our trial suggests

that the prevalence of the trial eligibility criteria was 0.75% (95% CIs: 0.65–0.86%) of practice registrations per year, matching our estimate in the protocol. However, the proportion of eligible

| Table 4. Chest X-ray outcomes  |      |                |            |             |
|--|------|----------------|------------|-------------|
|  | NICE |                | Extra-NICE |             |
|  | n    | (%)            | n          | (%)         |
| 12-month follow-up expected  | 125  |                | 125        |             |
| CRF return   | 123  |                | 120        |             |
| Number of patients receiving at least one chest X-ray in 12 months (n)                                 | 43   | 35.0           | 113        | 94.2        |
| Time to first chest X-ray – median (range (IQR)) days (if within 12 months)                            | 71   | 2–348 (17–233) | 3          | 0–308 (1–7) |
| Number of chest X-rays within 12 months (n)  | 50   |                | 148        |             |
| Normal   | 25   | 50.0           | 105        | 70.9        |
| Suspicious of lung cancer  | 1    | 2.0            | 4          | 2.7         |
| Missing data   | 0    | 0.0            | 1          | 0.7         |
| Other abnormality  | 24   | 48             | 38         | 25.7        |
| Number of participants <sup>a</sup> with at least one abnormality (lung cancer suspected or other)     | 20   | 16.3           | 31         | 25.8        |
| Other abnormalities diagnosis  | 24   |                | 38         |             |
| Non-lung abnormalities<br>Cardiac/aortic abnormalities, for example, cardiomegaly, widened aortic root | 6    | 25.0           | 14         | 36.8        |
| Lung abnormalities   |      |                |            |             |
| Suspected infection  | 5    | 20.8           | 5          | 13.2        |
| Benign lung disease  | 10   | 41.7           | 12         | 31.6        |
| COPD   | 2    | 8.3            | 2          | 5.3         |
| Emphysema  | 1    | 4.2            | 1          | 2.6         |
| Pleural plaques  | 0    | 0.0            | 2          | 5.3         |
| No change from previous  | 0    | 0.0            | 2          | 5.3         |

Abbreviations: COPD = chronic obstructive pulmonary disease; CRF = case report form data; IQR = interquartile range; NICE = National Institute for Health and Care Excellence.  
<sup>a</sup>Some patients had more than one X-ray.

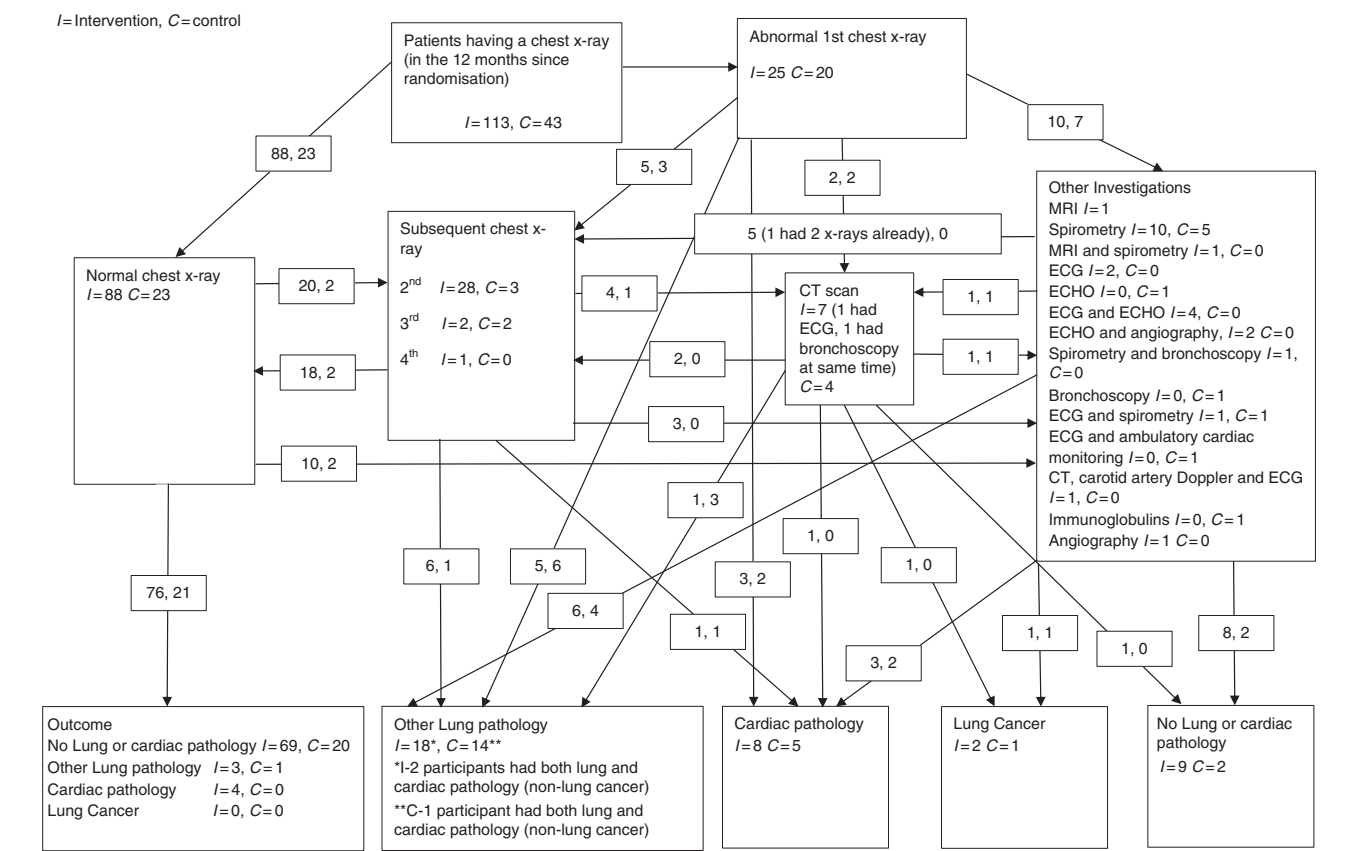


Figure 2. Flow chart showing all outcomes from chest X-rays in both the groups. I = Intervention, C = control.



**Table 5. Level of agreement between self-reported data and case report form data collected from the GP records (routinely collected data) by type of investigations use in the 2 months post baseline (n = 167)**

| Type of investigations     | CRF (+), SR (+) | CRF (+), SR (–) | CRF (–), SR (+) | CRF (–), SR (–) | Agreement (%) |
|----------------------------|-----------------|-----------------|-----------------|-----------------|---------------|
| 'Other' chest X-ray, n (%) | 12 (7.19)       | 2 (1.20)        | 52 (31.14)      | 101 (60.48)     | 113 (67.66)   |
| CT scan, n (%)             | 2 (1.20)        | 1 (0.60)        | 7 (4.19)        | 157 (94.01)     | 159 (95.21)   |
| MRI scan, n (%)            | 0 (0.00)        | 0 (0.00)        | 9 (5.39)        | 158 (94.61)     | 158 (94.61)   |
| PET-CT scan, n (%)         | 0 (0.00)        | 0 (0.00)        | 4 (2.40)        | 163 (97.60)     | 163 (97.60)   |

Abbreviations: CT = computed tomography; CRF = case report form data; ELCID = Early Lung Cancer Investigation and Diagnosis; GP = general practice; MRI = magnetic resonance imaging; PET-CT = positron emission tomography–computed tomography; SR = self-reported data. 'Other' chest X-ray means additional CXR received following the CXR received on the ELCID trial as part of the ELCID intervention. The differences reported in this table may reflect a change in wording from the original CRF, that was subsequently improved from 'Chest X-Ray' to 'Chest X-Ray (not including any received on the ELCID trial)'. CRF (–) means that the routine data did not indicate an investigation; CRF (+) means that the routine data indicated an investigation; SR (–) means that the respondent did not indicate an investigation; SR (+) means that the respondent indicated an investigation.

patients who agreed to participate was considerably lower than expected (33.2%; 95% CI 27.0–39.8%), explaining our lower than anticipated recruitment of 255 participants rather than the target 386. In addition, the trial suggests that the proportion of trial participants who developed lung cancer was 1.2% (95% CIs: 0.2–3.4%) – this is in keeping with our *a priori* estimate of 2.4%. The same three cancers identified within the practices were also identified by WCISU. The abnormal chest X-rays undertaken in both arms triggered further investigations, again as anticipated. We also identified more cardiac and other lung pathologies in the intervention than control group, although we are unsure of the clinical significance of this. We were able to collect questionnaires from patients' post randomisation and at 2 months with acceptable return rates. There was some evidence that anxiety and depression may have been higher in the control arm in those aged  $\geq 75$  years.

This was a challenging feasibility trial to undertake because we did not know at the outset whether it would be acceptable to recruit practices and patients to a study that individually randomised patients with possible lung cancer to quicker diagnostic testing. We were explicit in our patient recruitment materials that participants were at higher risk of lung cancer and that the intervention was a test to detect lung cancer earlier. We believe that this is the first trial that has recruited and randomised patients in this context. Through the use of good methods and engagement, such as a Working Group, training all relevant practice staff, practice payments for extra time taken, research network staff support wherever possible, use of practice databases to identify eligible patients wherever possible, we were able to recruit practices and participants albeit at a lower rate than anticipated.

### Discussion of the findings within the context of the literature

*The acceptability of trial design and materials, the training and recruitment of practices, and the recruitment and randomisation of patients.* The work that we put into the Working Group enabled us to make minor changes to the trial design that made the trial more acceptable to both practices and patients. This was demonstrated in our success in recruitment and randomisation. Although we thought that obtaining consent from patients may be more difficult, we elected to use an individually randomised design rather than a cluster design. This may have led to GPs having to take more time to explain the trial to patients accompanied by the administrative burden of individually randomising patients, with a consequent diminished consent rate. However, we found little evidence of contamination in the control arm seeking urgent chest X-rays.

*Anxiety and depression.* Our finding of higher anxiety in the over 75s in the control group fits with a Danish trial that participation in a randomised lung screening trial was associated with negative psychosocial consequences (Aggestrup *et al*, 2012).

*The views of patients and recruiters.* The importance of qualitative work in feasibility studies in establishing best recruitment methods has been highlighted by others (Fletcher *et al*, 2012; White and Hind, 2015). We successfully engaged with patient trial participants, patient non-participants, and recruiters from practices. The findings from this, which will be reported in full elsewhere, will inform the design of the subsequent main trial. Briefly, recommendations are to ensure recruiting sites are equipped to reduce misconceptions and misunderstandings of trial purpose, processes, and interventions when seeking consent. There will be less emphasis on smoking in the patient-facing materials. In terms of recruitment sites, the need for a strong point of contact for trial promotion and knowledge of processes is advised.

*The appropriateness of methods for collection of wider clinical and health economics data in a full trial.* The 2-month questionnaire return rates were  $>60\%$  – thought to be crucial in surveys to avoid bias from outliers (Kiess and Bloomquist, 1985). In the agreement analysis, the percentage of agreement between self-report data and routine-based health-care resource use data from patients' GP records for all four types of investigations were generally high, and line with other studies (Ungar and Coyte, 1998; Bhandari and Wagner, 2006). These findings suggest that self-report of health service use over a reasonably short recall period in this older population group seems valid. The completion rates for the tools that we used were acceptable, and we were able to collect useful information on presenting symptoms and co-morbidity. Quite importantly, we did not see a difference in anxiety and depression scores between trial arms. The fidelity of the intervention was good, in that 82% of participants in the intervention arm received a chest X-ray within 3 weeks. The proportion of participants in the control arm who received a chest X-ray was similar to what we anticipated.

**Strengths and weaknesses.** The main strength of the study is that we have conducted a pragmatic feasibility individually randomised trial in primary care, and fully tested all of the processes involved for a full trial. The main weakness is that in the protocol we aimed to recruit 386 participants, but we only recruited 255. This has lowered the precision with which we can estimate the key parameters required in designing the Phase III trial. We are also aware that the age and smoking thresholds used in this trial are different from some of the screening trials. Our screening log data may not be generalisable as it was based on two practices only. In addition the number of patients recruited per practice varied, with two practices contributing a third of the participants.

**Implications for policy, practice, and research.** In summary, we believe that we have demonstrated the feasibility of this trial design. However, while this raises several significant challenges (Box 2), we believe that there is a need for a trial that aims to diagnose symptomatic lung cancer earlier. This hypothesis has been helped

**Box 2. Challenges for a Phase III trial**

1. What should be used as a primary outcome measure? Survival, stage shift, or some other proxy measure?
2. What should be the nature of 'usual care' in the control group, now that NICE guidance has changed?
3. Should we be using low-dose CT rather than chest X-ray for imaging? Or indeed chest X-ray followed by CT for normal and abnormal chest X-rays? There is an emerging literature regarding allowing GPs access to low-dose CT, for patients with symptoms where lung cancer is suspected (Gulbrandt et al, 2014). However, a recent cluster trial in Denmark reported little improvement in stage or times to diagnosis with direct access to CT (Gulbrandt et al, 2015). This trial had different inclusion criteria to our design, hence it is unknown what effect on outcomes an individually randomised trial of direct access to CT for 'extra-NICE' symptoms would be. Whatever the nature of the intervention we have demonstrated the feasibility of the principle of a trial of urgent imaging in this population.
4. Does the possibility of a screening programme complicate symptomatic diagnosis? While the landmark American NLST reported a 20% reduction in mortality (National Lung Screening Trial Research Team, 2013), only 27% of American lung cancer patients meet their inclusion criteria (Pinsky and Berg, 2012). It is also unknown how attractive screening would be outside the highly motivated individuals participating in clinical trials and whether the results obtained in standard practice would be equivalent to those in the large, multidisciplinary academic centres participating in the clinical trials. Other drawbacks are the high prevalence of false-positive results and the risk of major complications in those diagnosed with benign nodules. In addition, people at high risk of lung cancer (smokers) have a relative disregard for their own health and express relative reluctance to consider CT screening, with only half saying that they would opt for surgery for a cancer diagnosed as a result of screening (Silvestri et al, 2007). Recruitment into a lung cancer screening programme does not appear to affect likelihood of smoking cessation. Aside from these practical considerations, additional downsides of screening include overdiagnosis (Patz et al, 2014), high cost and uncertain benefit, especially in Europe (McMahon et al, 2011), and that optimal follow-up algorithms have not yet been established. While screening may be an option in the future, it will not obviate the need for clinical diagnosis in patients presenting with symptoms.

by a recent study that has estimated the symptom lead time in lung cancer (the duration of reported symptoms before diagnosis) finding no relationship between duration of symptoms and stage (Biswas *et al*, 2015). The data for this study were collected in the era before the considerable expansion of diagnostic services for suspected cancer had occurred, and it is possible that results in a study conducted now would differ. That paper also reported the concept of two populations with lung cancer who are identified in any programme of enhanced diagnostics: those whose symptoms are caused by the cancer, and those whose symptoms met criteria for investigation, but were not actually caused by the cancer.

In conclusion, we have demonstrated the feasibility of recruiting to an individually randomised controlled trial in primary care for earlier chest X-ray for patients at higher risk of lung cancer who present to primary care with new symptoms. We are now developing a Phase III trial with the intention of evaluating the effect of timelier symptomatic diagnosis on lung cancer outcomes. While NICE guidelines have changed since we undertook the feasibility trial, we believe that our findings will inform a trial of very similar design; that is, individual randomisation of people at greater risk for expedited investigation or usual care. Our findings

are also likely to have implications for other studies of urgent investigation for serious conditions.

**Ethics and trial registration.** NHS ethics was approved by the North Wales Research Ethics Committee (11/WA/0222) on the 25 August 2011. ClinicalTrials.gov NCT01344005.

**ACKNOWLEDGEMENTS**

This trial was funded by the National Awareness and Early Diagnosis Initiative (NAEDI) Research Call Funding Partners (in alphabetical order): Cancer Research UK (trial reference: C8350/A12199); Department of Health, England; Economic and Social Research Council; Health and Social Care Research and Development Division, Public Health Agency, Northern Ireland; National Institute for Social Care and Health Research, Wales; and the Scottish Government (<http://www.naedi.org.uk>). The trial was developed on behalf of the NCRI Primary Care and Lung Clinical Studies Groups. It was sponsored by Bangor University. The Wales Cancer Trials Unit is funded by Cancer Research UK. The South East Wales Trials Unit is funded by Health and Care Research Wales. We would like to thank all the patients who participated in the trial; all the practices who participated in the trial; members of the Independent Trial Steering Committee; the Bristol Randomised Trials Collaboration; the Health and Care Research Wales Workforce; the Marie Curie Palliative Care Research Centre, and the Primary Care Research Network Workforce.

**CONFLICT OF INTEREST**

The authors declare no conflict of interest.

**AUTHOR CONTRIBUTIONS**

The trial was originally conceived by TR, and designed by RDN, KH, GG, CNH, TR, WH, AB, JF, RTE, STY, DP, AN, AT, who were all management group members throughout. RDN led the funding application. The trial was undertaken within the Wales Cancer Trials Unit (GG – former Director, CNH – scientific lead and senior statistician, KR – former trial manager, EB – trial manager, CP – statistician, ET-J – senior trial manager). CP undertook the statistical analysis under the supervision of CNH. STY undertook the health economic analysis, under RTE's supervision. HP undertook the qualitative work, under AN's supervision, and with advice from AT. RDN and CNH wrote the first draft of the paper. All of the co-authors contributed to the writing of the paper and have approved the manuscript. RDN will act as guarantor.

**REFERENCES**

- Aggestrup LM, Hestbech MS, Siersma V, Pedersen JH, Brodersen J (2012) Psychosocial consequences of allocation to lung cancer screening: a randomised controlled trial. *BMJ Open* 2: e000663.
- Athey VL, Suckling RJ, Tod AM, Walters SJ, Rogers TK (2012) Early diagnosis of lung cancer: evaluation of a community-based social marketing intervention. *Thorax* 67: 412–417.
- Barrett J, Hamilton W (2008) Pathways to the diagnosis of lung cancer in the UK: a cohort study. *BMC Fam Pract* 9: 31.
- Beecham J, Knapp M (1999) Costing psychiatric interventions. Discussion Paper 1536. PSSRU, University of Kent at Canterbury Available at: <http://www.pssru.ac.uk/pdf/dp1536.pdf> (accessed on December 2015).
- Bhandari A, Wagner T (2006) Self-reported utilization of health care services: improving measurement and accuracy. *Med Care Res Rev* 63: 217–235.

- Birt L, Hall N, Emery J, Banks J, Mills K, Johnson M, Hamilton W, Walter FM (2014) Responding to symptoms suggestive of lung cancer: a qualitative interview study. *BMJ Open Respir Res* 1: e000067.
- Biswas M, Ades AE, Hamilton W (2015) Symptom lead times in lung and colorectal cancers: what are the benefits of symptom-based approaches to early diagnosis? *Br J Cancer* 112: 271–277.
- Brocken P, Kiers Berni AB, Looijen-Salamon MG, Dekhuijzen PNR, Smits-van der Graaf C, Peters-Bax L, de Geus-Oei L, van der Heijden HFM (2012) Timeliness of lung cancer diagnosis and treatment in a rapid outpatient diagnostic program with combined 18FDG-PET and contrast enhanced CT scanning. *Lung Cancer* 75: 336–341.
- Cancer Research UK (2015) Cancer statistics. Available at: <http://www.cancerresearchuk.org/health-professional/cancer-statistics/statistics-by-cancer-type/lung-cancer> (accessed on November 2015).
- Coast J, Peters TJ, Natarajan L, Sproston K, Flynn T (2008) An assessment of the construct validity of the descriptive system for the ICECAP capability measure for older people. *Qual Life Res* 17: 967–976.
- EuroQoL (2015) EQ-5D-3L user guide. Available at [http://www.euroqol.org/fileadmin/user\\_upload/Documenten/PDF/Folders\\_Flyers/EQ-5D-3L\\_UserGuide\\_2015.pdf](http://www.euroqol.org/fileadmin/user_upload/Documenten/PDF/Folders_Flyers/EQ-5D-3L_UserGuide_2015.pdf) (accessed on 9 December 2015).
- EuroQol Group (1990) EuroQol—a new facility for the measurement of health-related quality of life. *Health Policy* 16: 199–208.
- Fletcher B, Gheorghe A, Moore D, Wilson S, Damery S (2012) Improving the recruitment activity of clinicians in randomised controlled trials: a systematic review. *BMJ Open* 2: e000496.
- Gulbrandt LM, Fenger-Gron M, Rasmussen TR, Rasmussen F, Meldgaard P, Vedsted P (2015) The effect of direct access to CT scan in early lung cancer detection: an unblinded, cluster-randomised trial. *BMC Cancer* 15: 934.
- Gulbrandt LM, Rasmussen TR, Rasmussen F, Vedsted P (2014) Implementing direct access to low-dose computed tomography in general practice—method, adaption and outcome. *PLoS One* 9: e112162.
- Hamilton W, Peters TJ, Round A, Sharp D (2005) What are the clinical features of lung cancer before the diagnosis is made? A population based case-control study. *Thorax* 60: 1059–1065.
- Hurt CN, Roberts K, Rogers T, Griffiths GO, Hood K, Prout H, Nelson A, Fitzgibbon J, Barham A, Thomas-Jones E, Tudor Edwards R, Yeo ST, Hamilton W, Tod A, Neal RD (2013) Protocol for a feasibility clinical trial examining the effect on lung cancer diagnosis of offering a chest X-ray to higher risk patients with chest symptoms. *Trials* 14: 405.
- Ironmonger L, Ohuma E, Ormiston-Smith N, Gildea C, Thomson CS, Peake MD (2015) An evaluation of the impact of large-scale interventions to raise public awareness of a lung cancer symptom. *Br J Cancer* 112: 207–216.
- Kiess HO, Bloomquist DW (1985) *Psychological Research Methods: A Conceptual Approach*. Allyn and Bacon: Boston, USA.
- Landis JR, Koch GG (1977) The measurement of observer agreement for categorical data. *Biometrics* 33: 159–174.
- Lyratzopoulos G, Neal RD, Barbiere JM, Rubin G, Abel G (2012) Variation in the number of general practitioner consultations before hospital referral for cancer: findings from a national patient experience survey. *Lancet Oncol* 13: 353–365.
- McMahon PM, Kong CY, Bouzan C, Weinstein MC, Cipriano LE, Tramontano AC, Johnson BE, Weeks JC, Gazelle GS (2011) Cost-effectiveness of computer tomography screening for lung cancer in the United States. *J Thorac Oncol* 6: 1841–1848.
- Murai T, Shibamoto Y, Baba F, Hashizume C, Mori Y, Ayakawa S, Kawai T, Takemoto S, Sugie C, Ogino H (2012) Progression of non-small-cell lung cancer during the interval before stereotactic body radiotherapy. *Int J Radiat Oncol Biol Phys* 82: 463–467.
- National Lung Screening Trial Research Team (2013) Results of initial low-dose computed tomographic screening for lung cancer. *N Engl J Med* 368: 1980–1991.
- Neal RD, Robbè IJ, Lewis M, Williamson I, Hanson J (2015a) The complexity and difficulty of diagnosing lung cancer: findings from a national primary-care study in Wales. *Prim Health Care Res Dev* 16: 436–449.
- Neal RD, Rogers T, Hamilton W (2014) Easily missed? Lung cancer. *BMJ* 349: g6560.
- Neal RD, Tharmanathan P, France B, Din NU, Cotton S, Fallon-Ferguson J, Hamilton W, Hendry A, Hendry M, Lewis R, Macleod U, Mitchell ED, Pickett M, Rai T, Shaw K, Stuart N, Tørring ML, Wilkinson C, Williams B, Williams N, Emery J (2015b) Is increased time to diagnosis and treatment in symptomatic cancer associated with poorer outcomes? Systematic review. *Br J Cancer* 112: S92–S107.
- NHS Wales (2014) Primary Care Research Incentive Scheme (PiCRIS). Available at: [http://www.wales.nhs.uk/sites3/Documents/952/PiCRIS\\_general\\_information\\_May\\_2014\\_low\\_res.pdf](http://www.wales.nhs.uk/sites3/Documents/952/PiCRIS_general_information_May_2014_low_res.pdf).
- NICE (2005) Referral Guidelines for Suspected Cancer. Clinical Guideline 27, 2005. Available at: <https://www.nice.org.uk/guidance/cg27>.
- NICE (2015) Suspected cancer: Recognition and Referral. NG12, 2015. Available at: <https://www.nice.org.uk/guidance/ng12>.
- Patz EF, Pinsky P, Gatsonis C, Sicks JD, Kramer BS, Tammemägi MC, Chiles C, Black WC, Aberle DR (2014) Overdiagnosis in low-dose computed tomography screening for lung cancer. *JAMA Intern Med* 174: 269–274.
- Pinsky PF, Berg CD (2012) Applying the National Lung Screening Trial eligibility criteria to the US population: what percent of the population and of incident lung cancers would be covered? *J Med Screen* 19: 154–156.
- Ridyard CH, Hughes DA, DIRUM Team (2012) Development of a database of instruments for resource-use measurement: purpose, feasibility, and design. *Value Health* 15: 650–655.
- Ridyard CH, Hughes DA (2010) Methods for the collection of resource use data within clinical trials: a systematic review of trials funded by the UK health technology assessment programme. *Value Health* 13: 867–872.
- Shim S, Brindle L, Simon M, George S (2014) A systematic review of symptomatic diagnosis of lung cancer. *Fam Pract* 31: 137–148.
- Silvestri GA, Nietert PJ, Zoller J, Carter C, Bradford D (2007) Attitudes towards screening for lung cancer among smokers and their non-smoking counterparts. *Thorax* 62: 126–130.
- Shoukri MM (2015) *Measures of Interobserver Agreement*. Chapman & Hall/CRC Press: Boca Raton, Florida, 2004. EuroQoL. EQ-5D-3L user guide. Available at [http://www.euroqol.org/fileadmin/user\\_upload/Documenten/PDF/Folders\\_Flyers/EQ-5D-3L\\_UserGuide\\_2015.pdf](http://www.euroqol.org/fileadmin/user_upload/Documenten/PDF/Folders_Flyers/EQ-5D-3L_UserGuide_2015.pdf) (accessed on 09 December 2015).
- Tørring ML, Frydenberg M, Hansen RP, Olesen F, Vedsted P (2013) Evidence of increasing mortality with longer diagnostic intervals for five common cancers: a cohort study in primary care. *Eur J Cancer* 49: 2187–2198.
- Ungar WJ, Coyte PC (1998) Health services utilization reporting in respiratory patients. Pharmacy Medication Monitoring Program Advisory Board. *J Clin Epidemiol* 51: 1335–1342.
- White D, Hind D (2015) Projection of participant recruitment to primary care research: a qualitative study. *Trials* 16: 473.
- Zigmond AS, Snaith RP (1983) The hospital anxiety and depression scale. *Acta Psychiatr Scand* 67: 361–370.

This work is published under the standard license to publish agreement. After 12 months the work will become freely available and the license terms will switch to a Creative Commons Attribution-NonCommercial-Share Alike 4.0 Unported License.