

Bangor University

DOCTOR OF PHILOSOPHY

**Richard Pennant, Samuel Worthington and the mill at Penlan
a history of the Penrhyn Mills on the Lower Ogwen**

Lill, Barrie

Award date:
2019

Awarding institution:
Bangor University

[Link to publication](#)

General rights

Copyright and moral rights for the publications made accessible in the public portal are retained by the authors and/or other copyright owners and it is a condition of accessing publications that users recognise and abide by the legal requirements associated with these rights.

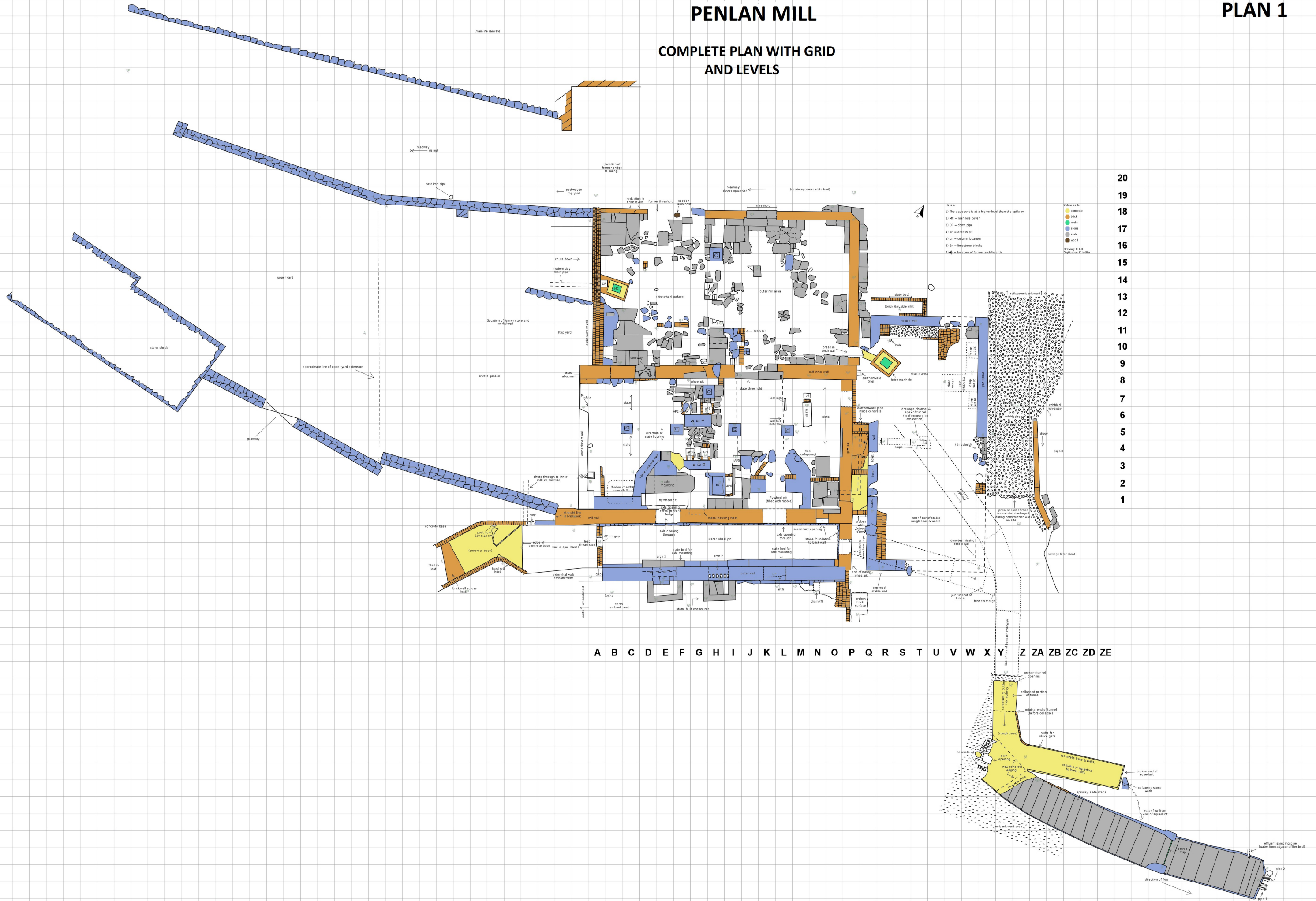
- Users may download and print one copy of any publication from the public portal for the purpose of private study or research.
- You may not further distribute the material or use it for any profit-making activity or commercial gain
- You may freely distribute the URL identifying the publication in the public portal ?

Take down policy

If you believe that this document breaches copyright please contact us providing details, and we will remove access to the work immediately and investigate your claim.

PENLAN MILL

COMPLETE PLAN WITH GRID AND LEVELS



- Notes:
- 1) The aqueduct is at a higher level than the railway.
 - 2) MC = manhole cover.
 - 3) DP = down pipe.
 - 4) AP = access pit.
 - 5) Cn = column location.
 - 6) Bn = limestone blocks.
 - 7) * = location of former archway.
- Colour code:
- Concrete
 - Brick
 - Metal
 - Stone
 - Slate
 - Wood
- Drawing: R. Lill
Digitization: H. Miller

20
19
18
17
16
15
14
13
12
11
10
9
8
7
6
5
4
3
2
1

A B C D E F G H I J K L M N O P Q R S T U V W X Y Z ZA ZB ZC ZD ZE