

**Bangor University**

## **DOCTOR OF PHILOSOPHY**

**Richard Pennant, Samuel Worthington and the mill at Penlan  
a history of the Penrhyn Mills on the Lower Ogwen**

Lill, Barrie

*Award date:*  
2019

*Awarding institution:*  
Bangor University

[Link to publication](#)

### **General rights**

Copyright and moral rights for the publications made accessible in the public portal are retained by the authors and/or other copyright owners and it is a condition of accessing publications that users recognise and abide by the legal requirements associated with these rights.

- Users may download and print one copy of any publication from the public portal for the purpose of private study or research.
- You may not further distribute the material or use it for any profit-making activity or commercial gain
- You may freely distribute the URL identifying the publication in the public portal ?

### **Take down policy**

If you believe that this document breaches copyright please contact us providing details, and we will remove access to the work immediately and investigate your claim.

# PENLAN MILL

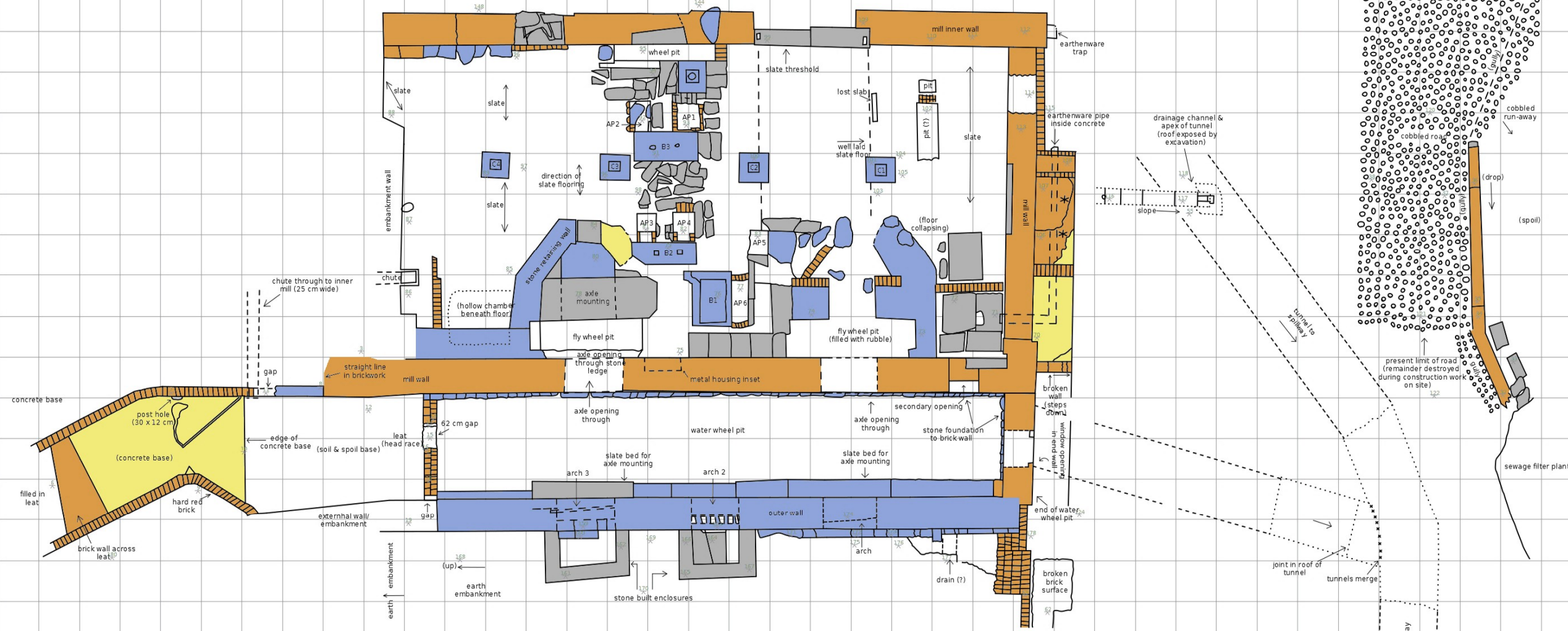
## INNER MILL AND COBBLED ROAD

20  
19  
18  
17  
16  
15  
14  
13  
12  
11  
10  
9  
8  
7  
6  
5  
4  
3  
2  
1



- Notes:
- 1) The aqueduct is at a higher level than the spillway.
  - 2) MC = manhole cover
  - 3) DP = down pipe
  - 4) AP = access pit
  - 5) Cn = column location
  - 6) Bn = limestone blocks
  - 7) \* = location of former arch/hearth

- Colour code:
- concrete
  - brick
  - metal
  - stone
  - slate
  - wood
- Drawing: B. Lill  
Digitization: K. Möller



A B C D E F G H I J K L M N O P Q R S T U V W X Y Z ZA ZB ZC ZD ZE