

The Forest Observation System, building a global reference dataset for remote sensing of forest biomass

Schepaschenko, Dmitry; Chave, Jerome; Phillips, Oliver L.; Lewis, Simon L.; Davies, Stuart J.; Rejou-Mechain, Maxime; Sist, Plinio; Scipal, Klaus; Perger, Christoph; Herault, Bruno; Labriere, Nicolas; Hofhansl, Florian; Affum-Baffoe, Kofi; Aleinikov, Alexei; Alonso, Alfonso; Amani, Christian; Araujo-Murakami, Alejandro; Armston, John; Arroyo, Luzmila; Ascarrunz, Nataly; Azevedo, Celso; Baker, Timothy; Balazy, Radomir; Bedeau, Caroline; Berry, Nicholas; Bilous, Andrii M.; Bilous, Svitlana Yu.; Bissiengou, Pulcherie; Blanc, Lilian; Bobkova, Kapitolina S.; Braslavskaya, Tatyana; Brien, Roel; Burslem, David F. R. P.; Condit, Richard; Cuni-Sanchez, Aida; Danilina, Dilshad; del Castillo Torres, Dennis; Derroire, Geraldine; Descroix, Laurent; Sotta, Eleneide Doff; d'Oliveira, Marcus V. N.; Dresel, Christopher; Erwin, Terry; Evdokimenko, Mikhail D.; Falck, Jan; Feldpausch, Ted R.; Foli, Ernest G.; Foster, Robin; Fritz, Steffen; Damian Garcia-Abril, Antonio; Gornov, Aleksey; Gornova, Maria; Gothard-Bassebe, Ernest; Gourlet-Fleury, Sylvie; Guedes, Marcelino; Hamer, Keith C.; Susanty, Farida Herry; Higuchi, Niro; Honorio Coronado, Euridice N.; Hubau, Wannes; Hubbell, Stephen; Ilstedt, Ulrik; Ivanov, Viktor V.; Kanashiro, Milton; Karlsson, Anders; Karminov, Viktor N.; Killeen, Timothy; Koffi, Jean-Claude Konan; Konovalova, Maria; Kraxner, Florian; Krejza, Jan; Krisnawati, Haruni; Krivobokov, Leonid V.; Kuznetsov, Mikhail A.; Lakyda, Ivan; Lakyda, Petro I.; Licona, Juan Carlos; Lucas, Richard M.; Lukina, Natalia; Lussetti, Daniel; Malhi, Yadvinder; Antonio Manzanera, Jose; Marimon, Beatriz; Marimon Junior, Ben Hur; Vasquez Martinez, Rodolfo; Martynenko, Olga V.; Matsala, Maksym; Matyashuk, Raisa K.; Mazzei, Lucas; Memiaghe, Herve; Mendoza, Casimiro; Monteagudo Mendoza, Abel; Moroziuk, Olga V.; Mukhortova, Liudmila; Musa, Samsudin; Nazimova, Dina I.; Okuda, Toshinori; Oliveira, Luis Claudio; Ontikov, Petr V.; Osipov, Andrey F.; Pietsch, Stephan; Playfair, Maureen; Poulsen, John; Radchenko, Vladimir G.; Rodney, Kenneth; Rozak, Andes H.; Ruschel, Ademir; Rutishauser, Ervan; See, Linda; Shchepashchenko, Maria; Shevchenko, Nikolay; Shvidenko, Anatoly; Silveira, Marcos; Singh, James; Sonke, Bonaventure; Souza, Cintia; Sterenczak, Krzysztof; Stonozhenko, Leonid; Sullivan, Martin J. P.; Szatniewska, Justyna; Aedoumg, Hermann T.; Ter Steege, Hans; Tikhonova, Elena; Toledo, Marisol; Trefilova, Olga V.; Valbuena, Ruben; Valenzuela Gamarra, Luis; Vasiliev, Sergey; Vedrova, Estella F.; Verhovets, Sergey V.; Vidal, Edson; Vladimirova, Nadezhda A.; Vleminckx, Jason; Vos, Vincent A.; Vozmitel, Foma K.; Wanek, Wolfgang; West, Thales A. P.; Woell, Hannsjorg; Woods, John T.; Wortel, Verginia; Yamada, Toshihiro; Hajar, Zamah Shari Nur; Zo-Bi, Irie Casimir

Scientific data

DOI:
[10.1038/s41597-019-0196-1](https://doi.org/10.1038/s41597-019-0196-1)

Published: 10/10/2019

Publisher's PDF, also known as Version of record

OPEN

DATA DESCRIPTOR

The Forest Observation System, building a global reference dataset for remote sensing of forest biomass

Dmitry Schepaschenko *et al.*[#]

Received: 24 January 2019

Accepted: 19 August 2019

Published online: 10 October 2019

Forest biomass is an essential indicator for monitoring the Earth's ecosystems and climate. It is a critical input to greenhouse gas accounting, estimation of carbon losses and forest degradation, assessment of renewable energy potential, and for developing climate change mitigation policies such as REDD+, among others. Wall-to-wall mapping of aboveground biomass (AGB) is now possible with satellite remote sensing (RS). However, RS methods require extant, up-to-date, reliable, representative and comparable *in situ* data for calibration and validation. Here, we present the Forest Observation System (FOS) initiative, an international cooperation to establish and maintain a global *in situ* forest biomass database. AGB and canopy height estimates with their associated uncertainties are derived at a 0.25 ha scale from field measurements made in permanent research plots across the world's forests. All plot estimates are geolocated and have a size that allows for direct comparison with many RS measurements. The FOS offers the potential to improve the accuracy of RS-based biomass products while developing new synergies between the RS and ground-based ecosystem research communities.

Background & Summary

Global estimates of forest height, aboveground biomass (AGB) and changes over space and time are needed as both essential climate variables¹ and essential biodiversity variables², and to support international policy initiatives such as REDD+³. Several space-borne missions to assess forest structure and functioning, including BIOMASS (ESA), ALOS PALSAR (JAXA), GEDI (NASA) and NISAR (NASA-ISRO), will be operational in the coming years. These missions require ground-based estimates for algorithm calibration and product validation. For instance, high-quality, standardized measurements of forest biomass and height are critical for improving the accuracy of products derived from space-borne instruments. Furthermore, ensuring that different missions have access to the same set of high-quality standardized measurements for calibration and validation should vastly help improve comparability and confidence in future remote sensing (RS) products.

Remote Sensing users typically have different product requirements compared to those of the ecological and forestry communities. Namely, RS users often (1) need access to AGB estimates at the pixel level, while ecologists and foresters produce area-based estimates derived from individual trees measurements. RS users typically (2) need products at a consistent spatial resolution, while a variety of plot sizes and shapes have been adopted by ecologists and foresters. Finally, RS users (3) require AGB to be computed via globally and regionally consistent routines, while various approaches have been developed to derive AGB estimates from tree measurements. These communities also operate differently from a funding perspective. Most notably, recurrent investments are needed to maintain permanent forest plots – including censuses that temporally match RS data collection – and to ensure field and botanical staff are paid and trained, without whom the data would not be collected. In contrast, RS users typically access data provided by space-borne missions that have already been funded. Despite these differences, there is a clear need to share existing data sets for the benefit of both communities.

[#]A full list of authors and their affiliations appears at the end of the paper. Correspondence and requests for materials should be addressed to D.S. (email: schepd@iiasa.ac.at)

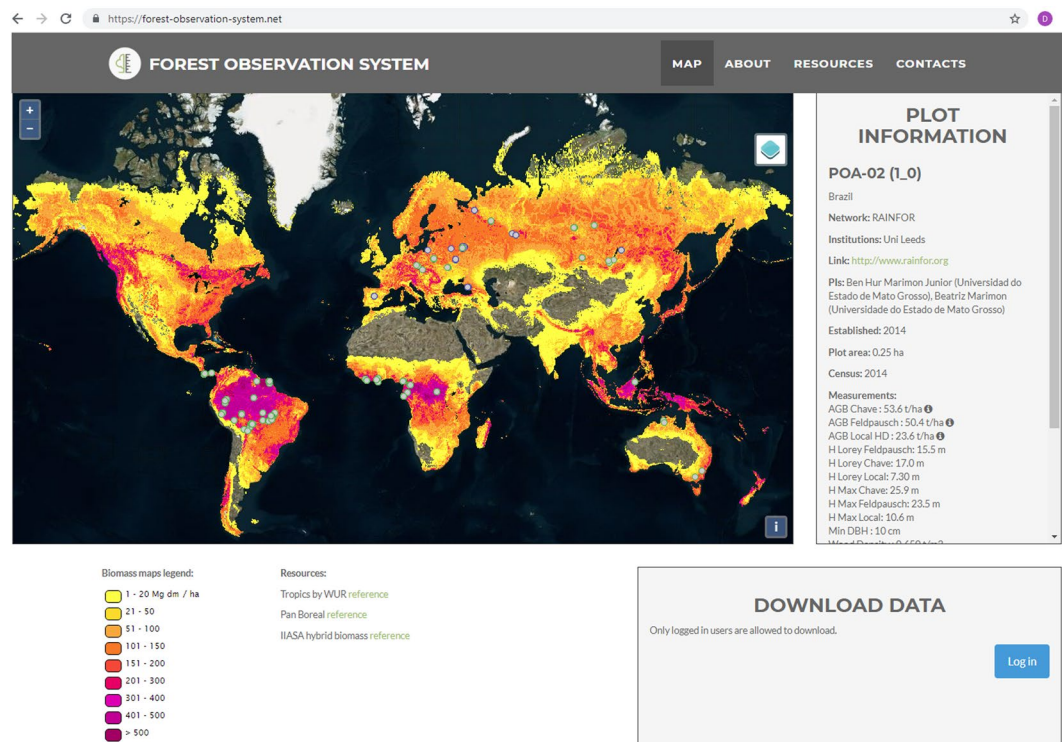


Fig. 1 The Forest-Observation-System.net web portal.

The Forest Observation System – FOS (<http://forest-observation-system.net/>) – is an international, collaborative initiative that aims to establish a global *in situ* forest AGB database to support Earth Observation (EO) and to encourage investment in relevant field-based measurements and research⁴. The FOS enables access to high-quality field data by partnering with some of the most well-established teams and networks responsible for managing permanent forest plots globally. In doing so, FOS is benefiting both the RS and ecological/forestry communities while facilitating positive interactions between them.

To this end, the FOS project has established a data sharing policy and framework that seeks to overcome existing barriers between data providers and users. For example, data made available on the FOS website are plot-aggregated (i.e., stand AGB, canopy height, etc.), while the underlying original tree-by-tree data are managed by participating ecological networks. To ensure that estimates added to the FOS are robust and consistent, a freely downloadable BIOMASS R-package⁵ has been upgraded, which makes the procedure for computing plot AGB estimates from tropical forest inventories transparent, standardized and reproducible. There are developments underway to make the package usable for any forest type, including boreal and temperate ecosystems. This work has been complemented by the definition of a set of technical requirements and standards aimed at ensuring data comparability⁴.

The FOS currently hosts aggregate data from plots contributed by several existing networks, including: the network of the Center for Tropical Forest Science – Forest Global Earth Observatory (CTFS-ForestGEO)⁶, the RAINFOR⁷, AfriTRON⁸ and T-FORCES⁹ (curated on the ForestPlots.net platform)¹⁰, the IIASA network^{11,12}, the Tropical Managed Forests Observatory (TmFO)¹³ and AusCover¹⁴. These international collaborations have already (i) invested in establishing permanent sampling plots; (ii) proposed robust protocols for accurate tree mapping and measurement, which are largely standardized across networks; (iii) monitored existing plots repeatedly; and (iv) established databases with particular emphasis on data quality control^{10,15}. As the FOS is an open initiative, additional networks (e.g., GFBF¹⁶) and teams that comply with the aforementioned criteria are welcome to join in the future.

The data presented here have been partly published before^{17–21}, but never in such a unified and comprehensive manner. Results based on some of the plots presented here have impacted a wide range of scientific fields, including tropical forest ecology^{22–26}, drought sensitivity of forests^{19,27–29}, tree allometry^{30–33}, carbon cycles^{21,34–36}, remote sensing^{18,37–39}, climate change^{8,40–43}, biodiversity^{44–47}, diversity-carbon relationships^{48,49} and historical forest use^{50,51}, among others.

The online database (<http://forest-observation-system.net/>) provides open access to the canopy height and biomass estimates as well as information about the plot PIs who have granted access to the data (see Fig. 1 below).

Methods

Within the sample plots, every stem above a defined threshold in diameter at breast height (DBH, usually 1, 5, 7 or 10 cm) was taxonomically identified and the DBH measured, avoiding any buttresses or deformities. In most plots, tree height was measured for a subset of trees that are representative of different diameter classes and tree species in order to develop site-specific height-diameter regression equations. Based on an analysis using the

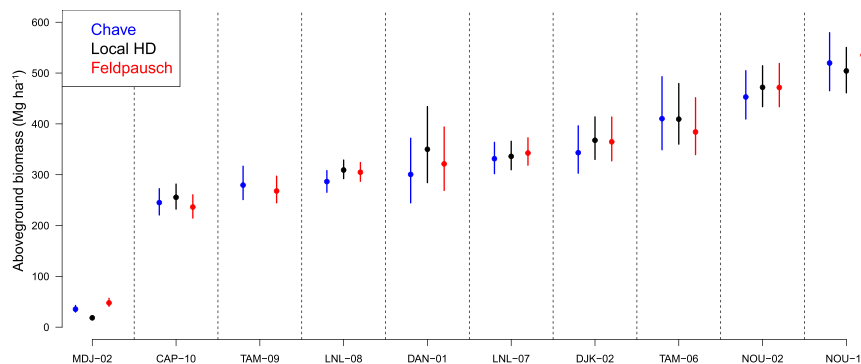


Fig. 2 An example of the AGB estimation with the BIOMASS R-package. MDJ-02, CAP-10 and other indexes on the horizontal axis are Plot IDs. The vertical axis is AGB in Mg ha^{-1} and the error bar represents the credibility interval at 95% of the stand AGB value following error propagation.

tropical forest plot data, as few as 40 tree height observations are sufficient for characterizing this relationship if stratified by diameter²².

All the data presented here were collected from permanent forest sample plots with known locations; accurate coordinates (with an error of less than 30 meters) have been either delivered to the FOS or will be recorded during the next census. Plot sizes are typically 1 ha in area (i.e., the median), but they can vary from 0.25 ha to 50 ha. Large plots are subdivided into 0.25 ha, i.e., 50×50 m sub-plots. The FOS consortium made the decision to consider only relatively large and permanent plots in order to reduce errors in georeferencing and to decrease the variability in the measured parameters. Recent research has quantified the effect of spatial resolution on the uncertainties in the AGB estimates, with sampling error dropping from 46.3% for 0.1 ha plots, to 26% and 16.5% for 0.25 ha and 1 ha plots, respectively⁵². Scaling up from the plot to the landscape level using lidar-derived metrics, studies have shown decreases in the RMSE for the AGB-lidar models, from 70–90 to 36–51 Mg AGB per ha , when increasing the plot size from 0.25 ha to 1 ha^{17,53}. Clearly there are always size-effort tradeoffs, e.g., smaller plots would permit greater replication, but by focusing on larger plots that are also permanent, FOS has chosen to focus its efforts on a smaller but high-quality set of plots. Our approach, therefore, excludes the possibility of using databases of smaller plots such as those found in national forest inventories.

AGB and associated uncertainties were obtained using a standardized procedure implemented in the BIOMASS R-package⁵. For the sake of standardization, we systematically considered only trees having a diameter ≥ 10 cm (or a 5 cm threshold in the case where these trees contribute substantially ($>5\%$) to the total AGB, e.g., in savannas). Taxonomy was first checked using the Taxonomic Name Resolution Service, which in turn served to assign a wood density value to each tree using the Global Wood Density Database (GWDD) as a reference^{54,55}. Species- or genus-level averages were assigned when possible and, if not, the plot-level mean wood density was assigned to each tree species with no known wood density. Tree height was estimated in three different ways. First, when available, subsets of tree height measurements were used to build plot-specific height-diameter relationships, assuming a three-parameter Weibull model⁵ or a two-parameter Michaelis-Menten model, whichever provided the lowest prediction error. Secondly, the regional height-diameter models proposed by Feldpausch *et al.*³¹ were used to infer tree height. Finally, height was implicitly taken into consideration in the AGB calculation through the use of the bioclimatic predictor E proposed by Chave *et al.*³⁰. Equation 7 of Chave *et al.*³⁰ was used in this case while the generalized allometric model equation 4 was used otherwise (where heights were derived from local or Feldpausch height-diameter relationships). Among the three approaches, the use of a local HD model is the most accurate. However, local height measurements are not systematically available for all plots. The Chave *et al.* (2014) and Feldpausch *et al.* (2012) approaches are both an alternative to the use of a local HD model but independent validation (e.g., Fig. 2) has shown that their relative performance varies among locations. Thus, the most conservative approach is to provide the three estimates so that the uncertainty associated with the HD relationship can be assessed.

Errors associated with each of these steps (i.e., DBH measurement, wood density, tree height) were propagated through a Monte Carlo scheme to provide mean AGB estimates with associated credibility intervals (Fig. 2).

Boreal and temperate plots (representing 11% of the total number of sub-plots) were processed manually using similar steps. Species-specific allometric equations⁵⁶ allowed the stem volume to be estimated based on the height and DBH measurements. Biomass conversion and expansion factors⁵⁷ were used to estimate AGB from the stem volume taking the tree age, site index and stocking into account. The next version of the BIOMASS R-package will be capable of processing boreal and temperate data in addition to tropical.

Data Records

The data in FOS⁵⁸ are organized in a hierarchical structure (Fig. 3). The **Plot** description includes a link to the institution and network. The central part of the database is the **Sub-plot** table, where geolocation, the date of the census, the people who manage the specific plots, the AGB and the canopy height are stored.

The FOS does not store individual tree-level information, only plot-level aggregates. Users interested in tree-level information can contact the contributing networks or the plot PIs using the links provided in the Plot table.

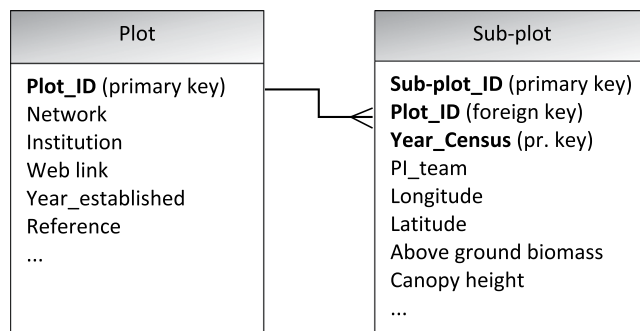


Fig. 3 The database structure of the plot information.

The details of the fields found in the two linked tables of Fig. 3 are provided below.
Plot description

- Plot_ID – unique plot ID
- Country_Name – Name of the country
- Network – the name of the network (e.g., RAINFOR)
- Institution – the institution that carried out the measurements
- Link – web link to the data provider
- Year_established – the year when the plot was established
- Reference – a reference to the publications
- Other_measurements – list of parameters measured on the plot
- Biomass_processing_protocol – file name of the biomass processing protocol (available at Data Package 1), which contains the R code, the variables assigned and the intermediate results.

Sub-plot description

- Sub-plot_ID – unique sub-plot ID
- Plot_ID – link to the **Plot description** table
- Year_census – year of the census
- PI_team – List of Principal Investigator(s)
- Lat_cnt – Latitude of the center of the plot
- Long_cnt – Longitude of the center of the plot
- Altitude (m a.s.l.)
- Slope (degree)
- Plot_area (ha)
- Plot_shape (e.g., rectangle, circle, plus dimensions)
- Forest_status – forest description, including age, successional stage, disturbances, etc.
- Min_DBH – Minimum diameter of trees at breast height included in the census (cm)
- H_Lorey – Lorey's height, DBH-weighted mean tree height (m)
- H_{lor} local – mean height estimated from local $H = f(\text{DBH})$ curve (m)
- H_{lor} Chave – mean height estimated from the curve by Chave³⁰ (m)
- H_{lor} Feldpausch – mean height estimated from the curve by Feldpausch³¹ (m)
- H_max – height of the tallest tree (m)
- H_{max} local – tallest tree measured or estimated from local $H = f(\text{DBH})$ curve (m)
- H_{max} Chave – maximum height estimated from the curve by Chave (m)
- H_{max} Feldpausch – maximum height estimated from the curve by Feldpausch (m)
- AGB – Above ground biomass (Mg ha^{-1})
- AGB_local – aboveground biomass (Mg ha^{-1}) estimated using local equations or equation 4 in Chave³⁰ with wood density, DBH and H derived from local height-diameter relationships.
- Cred_2.5 – lower bound of 95% credibility interval (Mg ha^{-1})
- Cred_97.5 – upper bound of 95% credibility interval (Mg ha^{-1})
- AGB_Feldpausch – AGB (Mg ha^{-1}) using equation 4 in Chave³⁰ with wood density, DBH and H derived from Feldpausch³¹ height-diameter relationship.

- Cred_2.5 – lower bound of 95% credibility interval (Mg ha^{-1})
- Cred_97.5 – upper bound of 95% credibility interval (Mg ha^{-1})
- AGB_Chave – aboveground biomass (in Mg ha^{-1}) estimated using equation 7 in Chave³⁰ with wood density, DBH and H implicitly taken into consideration through the use of the bioclimatic predictor E
- Cred_2.5 – lower bound of 95% credibility interval (Mg ha^{-1})
- Cred_97.5 – upper bound of 95% credibility interval (Mg ha^{-1})
- Wood_density – mean wood density of the trees (g cm^{-3})
- GSV – growing stock volume ($\text{m}^3 \text{ha}^{-1}$)
- BA – basal area ($\text{m}^2 \text{ha}^{-1}$)
- Ndens – number of trees per hectare

Note that we have merged the Plot and Sub-plot tables in the data package associated with this paper⁵⁸ for the user's convenience.

Technical Validation

The key predictive variables of AGB are tree dimensions (primarily diameter and height) and taxonomic identity, which is responsible for explaining most tree-to-tree variations through interspecific wood density variations⁵⁹. The procedures for ensuring the quality of the data collected are as follows:

- (1) *On-site measurement accuracy.* To ensure diameter accuracy and consistency among and within censuses, field teams follow standard forest inventory protocols for the correct choice of the Point of measurement (POM). For example, the RAINFOR protocol for tropical forests⁶⁰ records each POM by painting the location on each tree to ensure that subsequent measurements can be performed at the same point. For tree height, the consistency of the height measurement is ensured by having a designated, trained operator who works at multiple sites using the same instrument. At some sites, double measurements of height (from different positions) have been carried out, and mean values have been used as the height of the individual trees. For species identification, the reliability in highly diverse tropical plots is important; hence, the tree and plot AGB is estimated by taking the species-level variability in wood density into account⁶¹. This is supported by collecting botanical vouchers from every taxon (or potential taxon) in the field. In many cases, these vouchers have been deposited in recognized regional herbaria, identified by botanical experts, and where possible, made available electronically (e.g., via ForestPlots.net). However, voucher collection is not currently a standard protocol for every plot in the FOS.
- (2) *Multiple censusing.* By working primarily with re-censused permanent plots rather than single census plots, we have ensured that the uncertainties are reduced because almost every tree has been measured at least twice by the time of the focal census, thus providing the opportunity to correct any errors that may have been made previously, through the identification of spurious values. Repeat censuses also provide more opportunities to improve species identification by increasing the chance of encountering fertile material (see the next step).
- (3) *Post fieldwork data processing,* e.g., by identifying trees to species level. Species identification can be extremely challenging in tropical forests due to their diversity and the fact that most trees lack flowers or fruits when inventoried. Botanical identity is a key control on the AGB through its effect on wood density. To explore the reliability of identification in some of the most diverse RAINFOR sites in western Amazonia, PIs have separated the tree species assemblages into several larger taxonomic groups. As reported by Baker *et al.*⁶², taxonomic specialists for each group have then assessed the accuracy of the species identifications of the herbarium collections using 18 different botanists across 60 plots during the past 30 years. Overall, even in taxonomically difficult groups where species are often very rare, 75% of tree species were correctly identified.
- (4) *Common protocols for potential error detection.* These protocols have been developed by contributing networks, e.g., by flagging trees for attention that have declined by more than 5 mm in diameter. This allows trees to be detected that have shrunk between two censuses, and whether that individual is dead/rotten. Potential issues are flagged in order to be checked against existing field notes, and during the following census. Thus, as mentioned previously, repeat censuses provide more opportunities to improve data quality as compared to single-census plots.
- (5) *Within-network collaboration.* Data quality is further enhanced through the exchange of ideas between experts at different sites and between nations, through the use of common data analysis protocols (i.e., allometric equations, R packages, etc.), and by promoting shared publications.
- (6) *Cross-network collaboration.* In the FOS, by applying a uniform R script for data aggregation and AGB estimation, potential biases from using different height-diameter, wood density and allometric relations are strongly reduced.

The distribution of FOS plots by continent is presented in Table 1. Africa, Europe and South America are represented by similar numbers of locations (i.e., 62–80 plots) and contribute more than 80% of the plots at the time of publication, but in terms of coverage, South America alone comprises 49% of the forest area covered.

Continent/regions	Number of plots	Number of sub-plots	Area (ha)
Africa	62	338	85
Asia	29	46	20
Australia	4	4	3
Central America	21	278	69
Europe	80	146	42
South America	78	833	209
Total	274	1645	428

Table 1. Distribution of records by continents (as of December 2018).

Network	Number of plots	Number of sub-plots	Area, ha
AfriTRON	46	178	45
AusCover	4	4	3
CTFS-ForestGEO	2	300	75
IIASA	126	258	78
RAINFOR	52	288	72
T-Forces	3	12	3
TmFO	17	500	125
Unaffiliated to network	24	105	27
Total	274	1645	428

Table 2. The distribution of records by participating networks (as of December 2018).

Parameters	min	Max	Median
Latitude	−36.52	64.51	5.26
Longitude	−83.58	148.92	−52.92
Plot area	0.25	50	1.0
Sub-plot area	0.0625	2.89	0.25
Year established	1955	2017	2012
Year of census	1999	2018	2012
Min DBH, cm	1	10	10
Height Lorey's, m	2.3	41.7	26.8
Height max, m	3.6	60.1	39.3
AGB, t ha ^{−1}	0.3	933	258
Basal area, m ² ha ^{−1}	0.05	85.58	28.32
Tree density, trees ha ^{−1}	4	1800	452

Table 3. The range of major forest parameters in the FOS database (as of December 2018).

The IIASA network provides the highest number of plot locations to FOS (Table 2), while the TmFO network contributes the most in terms of areal coverage.

The range of values of major forest parameters represented in the FOS database is shown in Table 3. The maximum AGB value (918 Mg ha^{−1}) and canopy height (41.7 m) at a 0.25 ha sub-plot were recorded in Lopé, Gabon. Some savannah sub-plots (e.g., in Gabon) have a few or no trees >5 cm dbh, which leads to low or no biomass estimation. The tallest trees (60.1 m) was found in Costa Rica and the maximum basal area (85.6 m² ha^{−1}) was found in the Caucasus, Russia.

Table 4 contains information about the AGB for different biomes and globally. As expected, the average AGB increases from boreal to temperate and then from temperate to tropical forests.

Usage Notes

This data set will be essential for validating and calibrating satellite observations and forest biometric models. The focus is to provide ground support for current and planned space-borne missions, such as NASA GEDI (<https://gedi.umd.edu/>), NASA-ISRO NISAR (<https://nisar.jpl.nasa.gov/>), JAXA ALOS PALSAR (<http://global.jaxa.jp/projects/sat/alos/>) and ESA BIOMASS (<https://earth.esa.int/web/guest/missions/esa-future-missions/biomass>), which are aimed at retrieving forest structure parameters such as forest height and biomass.

Biome	Min	Max	Average	StdDev
Boreal	1	324	99	68
Temperate	48	609	211	75
Tropics	0.3	933	311	132
Global	0.3	933	299	133

Table 4. The distribution of aboveground biomass data (t ha^{-1}) by biome in the FOS database (as of December 2018).

At this stage, we are making no claims regarding the statistical robustness of the FOS data set for global or regional biomass estimations. Instead our aim is to present uniformly processed data on forest biomass from available locations (see Table 1). One of the main goals of the FOS is to highlight gaps in the observations.

Using sub-plot data for validation of RS data might lead to spatial autocorrelation problems so possible solutions would be to use a plot average, use only values from the plot or test for the presence of spatial autocorrelation.

This data package contains geographical coordinates rounded to 2 digits after decimal point (up to 1 km at equator). The most up-to-date extended data set with accurate geolocation is available in the FOS portal: <https://forest-observation-system.net/>

The FOS initiative depends on the contributions of high-quality forest plot data from participating networks. The fair use of the data presented here requires respecting the efforts and rights of the partners and supporting the long-term future of these observational efforts. The data set will be licensed under a Creative Commons Attribution 4.0 International License (CC-BY 4.0), which means that it will be fully open even for commercial use but requires acknowledgment of the PIs and plot owners. We would also appreciate that all users of the FOS data either share their own data via the FOS, and/or commit to collaboratively funding new censuses and the expansion of existing plot networks.

Code Availability

The BIOMASS R-package is an open source library available from the CRAN R repository. The development version is publicly available and can be found on the GitHub platform at: <https://github.com/AMAP-dev/BIOMASS>. Furthermore, the BIOMASS R-package is accompanied by an open access paper describing the functionality in more detail⁵.

References

- Bojinski, S. *et al.* The Concept of Essential Climate Variables in Support of Climate Research, Applications, and Policy. *Bull. Am. Meteorol. Soc.* **95**, 1431–1443 (2014).
- Pereira, H. M. *et al.* Essential Biodiversity Variables. *Science* **339**, 277–278 (2013).
- Schepaschenko, D. *et al.* Global biomass information: from data generation to application. In *Handbook of Clean Energy Systems* **1**, 11–33 (Wiley, 2015).
- Chave, J. *et al.* Ground data are essential for biomass remote sensing missions. *Surv. Geophys.* <https://doi.org/10.1007/s10712-019-09528-w> (2019).
- Réjou-Méchain, M., Tanguy, A., Piponiot, C., Chave, J. & Hérault, B. biomass: an R package for estimating above-ground biomass and its uncertainty in tropical forests. *Methods Ecol. Evol.* <https://doi.org/10.1111/2041-210X.12753> (2017).
- Anderson-Teixeira, K. J. *et al.* CTFS-ForestGEO: a worldwide network monitoring forests in an era of global change. *Glob. Change Biol.* **21**, 528–549 (2015).
- Malhi, Y. *et al.* An international network to monitor the structure, composition and dynamics of Amazonian forests (RAINFOR). *J. Veg. Sci.* **13**, 439–450 (2002).
- Lewis, S. L. *et al.* Increasing carbon storage in intact African tropical forests. *Nature* **457**, 1003–1006 (2009).
- Qie, L. *et al.* Long-term carbon sink in Borneo's forests halted by drought and vulnerable to edge effects. *Nat. Commun.* **8**, 1966 (2017).
- Lopez-Gonzalez, G., Lewis, S. L., Burkitt, M. & Phillips, O. L. ForestPlots.net: a web application and research tool to manage and analyse tropical forest plot data. *J. Veg. Sci.* **22**, 610–613 (2011).
- Schepaschenko, D. *et al.* A dataset of forest biomass structure for Eurasia. *Sci. Data* **4**, 201770 (2017).
- Pietsch, S. A. Modelling ecosystem pools and fluxes. *Implementation and application of biogeochemical ecosystem models*. (BOKU, 2014).
- Sist, P. *et al.* The Tropical managed Forests Observatory: a research network addressing the future of tropical logged forests. *Appl. Veg. Sci.* **18**, 171–174 (2015).
- TERN Auscover. Biomass Plot Library - National collation of tree and shrub inventory data, allometric model predictions of above and below-ground biomass, Australia. Made available by the AusCover facility of the Terrestrial Ecosystem Research Network (TERN) (2016).
- Condit, R. S. *et al.* Tropical forest dynamics across a rainfall gradient and the impact of an El Niño dry season. *J. Trop. Ecol.* **20**, 51–72 (2004).
- Liang, J. *et al.* Positive biodiversity-productivity relationship predominant in global forests. *Science* **354**, 196 (2016).
- Labrière, N. *et al.* In situ reference datasets from the TropiSAR and AfriSAR campaigns in support of upcoming spaceborne biomass missions. *IEEE J. Sel. Top. Appl. Earth Obs. Remote Sens.* **11**, 3617–3627 (2018).
- Taylor, P. *et al.* Landscape-scale controls on aboveground forest carbon stocks on the Osa peninsula, Costa Rica. *PLOS ONE* **10**, e0126748 (2015).
- Hofhansl, F. *et al.* Sensitivity of tropical forest aboveground productivity to climate anomalies in SW Costa Rica. *Glob. Biogeochem. Cycles* **28**, 1437–1454 (2014).
- Piponiot, C. *et al.* Carbon recovery dynamics following disturbance by selective logging in Amazonian forests. *eLife* **5**, e21394 (2016).

21. Lewis Simon, L. *et al.* Above-ground biomass and structure of 260 African tropical forests. *Philos. Trans. R. Soc. B Biol. Sci.* **368**, 20120295 (2013).
22. Sullivan, M. J. P. *et al.* Field methods for sampling tree height for tropical forest biomass estimation. *Methods Ecol. Evol.* **9**, 1179–1189 (2018).
23. ter Steege, H. *et al.* Hyperdominance in the Amazonian tree flora. *Science* **342**, 1243092 (2013).
24. Baker, T. R. *et al.* Fast demographic traits promote high diversification rates of Amazonian trees. *Ecol. Lett.* **17**, 527–536 (2014).
25. Johnson, M. O. *et al.* Variation in stem mortality rates determines patterns of above-ground biomass in Amazonian forests: implications for dynamic global vegetation models. *Glob. Change Biol.* **22**, 3996–4013 (2016).
26. Aguirre-Gutiérrez, J. *et al.* Drier tropical forests are susceptible to functional changes in response to a long-term drought. *Ecol. Lett.* **22**, 855–865 (2019).
27. Phillips, O. L. *et al.* Drought Sensitivity of the Amazon Rainforest. *Science* **323**, 1344–1347 (2009).
28. Esquivel-Muelbert, A. *et al.* Seasonal drought limits tree species across the Neotropics. *Ecography* **40**, 618–629 (2017).
29. Feldpausch, T. R. *et al.* Amazon forest response to repeated droughts. *Glob. Biogeochem. Cycles* **30**, 964–982 (2016).
30. Chave, J. *et al.* Improved allometric models to estimate the aboveground biomass of tropical trees. *Glob. Change Biol.* **20**, 3177–3190 (2014).
31. Feldpausch, T. R. *et al.* Tree height integrated into pantropical forest biomass estimates. *Biogeosciences* **9**, 3381–3403 (2012).
32. Bastin, J.-F. *et al.* Pan-tropical prediction of forest structure from the largest trees. *Glob. Ecol. Biogeogr.* **27**, 1366–1383 (2018).
33. Feldpausch, T. R. *et al.* Height-diameter allometry of tropical forest trees. *Biogeosciences* **8**, 1081–1106 (2011).
34. Phillips, O. L. Changes in the Carbon Balance of Tropical Forests: Evidence from Long-Term Plots. *Science* **282**, 439–442 (1998).
35. Slik, J. W. F. *et al.* Large trees drive forest aboveground biomass variation in moist lowland forests across the tropics. *Glob. Ecol. Biogeogr.* **22**, 1261–1271 (2013).
36. Hubau, W. *et al.* The persistence of carbon in the African forest understory. *Nat. Plants* **5**, 133 (2019).
37. Mitchard, E. T. A. *et al.* Markedly divergent estimates of Amazon forest carbon density from ground plots and satellites. *Glob. Ecol. Biogeogr.* **23**, 935–946 (2014).
38. Santoro, M. *et al.* Forest growing stock volume of the northern hemisphere: Spatially explicit estimates for 2010 derived from Envisat ASAR. *Remote Sens. Environ.* **168**, 316–334 (2015).
39. Valbuena, R. *et al.* Enhancing of accuracy assessment for forest above-ground biomass estimates obtained from remote sensing via hypothesis testing and overfitting evaluation. *Ecol. Model.* **366**, 15–26 (2017).
40. Thomas, C. D. *et al.* Extinction risk from climate change. *Nature* **427**, 145–148 (2004).
41. Esquivel-Muelbert, A. *et al.* Compositional response of Amazon forests to climate change. *Glob. Change Biol.* **25**, 39–56 (2019).
42. Brien, R. J. W. *et al.* Long-term decline of the Amazon carbon sink. *Nature* **519**, 344–348 (2015).
43. Pan, Y. *et al.* A large and persistent carbon sink in the world's forests. *Science* **333**, 988–993 (2011).
44. Phillips, O. L., Hall, P., Gentry, A. H., Sawyer, S. A. & Vásquez, R. Dynamics and species richness of tropical rain forests. *Proc. Natl. Acad. Sci.* **91**, 2805–2809 (1994).
45. de Souza, F. C. *et al.* Evolutionary heritage influences Amazon tree ecology. *Proc R Soc B* **283**, 20161587 (2016).
46. Coronado, E. N. H. *et al.* Phylogenetic diversity of Amazonian tree communities. *Divers. Distrib.* **21**, 1295–1307 (2015).
47. ter Steege, H. *et al.* Estimating the global conservation status of more than 15,000 Amazonian tree species. *Sci. Adv.* **1**, e1500936 (2015).
48. Sullivan, M. J. P. *et al.* Diversity and carbon storage across the tropical forest biome. *Sci. Rep.* **7**, 39102 (2017).
49. Fauset, S. *et al.* Hyperdominance in Amazonian forest carbon cycling. *Nat. Commun.* **6**, 6857 (2015).
50. Levis, C. *et al.* Persistent effects of pre-Columbian plant domestication on Amazonian forest composition. *Science* **355**, 925–931 (2017).
51. Willcock, S. *et al.* Land cover change and carbon emissions over 100 years in an African biodiversity hotspot. *Glob. Change Biol.* **22**, 2787–2800 (2016).
52. Réjou-Méchain, M. *et al.* Local spatial structure of forest biomass and its consequences for remote sensing of carbon stocks. *Biogeosciences* **11**, 6827–6840 (2014).
53. Knapp, N., Fischer, R. & Huth, A. Linking lidar and forest modeling to assess biomass estimation across scales and disturbance states. *Remote Sens. Environ.* **205**, 199–209 (2018).
54. Chave, J. *et al.* Towards a worldwide wood economics spectrum. *Ecol. Lett.* **12**, 351–366 (2009).
55. Zanne, A. E. *et al.* Global Wood Density Database. *Dryad Digital Repository*, <https://doi.org/10.5061/dryad.234/1> (2009).
56. Zagreev, V. V. *et al.* All-Union regulations for forest mensuration. (Koloz, 1992).
57. Schepaschenko, D. *et al.* Improved estimates of biomass expansion factors for Russian forests. *Forests* **9**, 312 (2018).
58. Schepaschenko, D. *et al.* A global reference dataset for remote sensing of forest biomass. The Forest Observation System approach. *IIASA*, <https://doi.org/10.22022/ESM/03-2019.38> (2019).
59. Baker, T. R. *et al.* Variation in wood density determines spatial patterns in Amazonian forest biomass. *Glob. Change Biol.* **10**, 545–562 (2004).
60. Marthews, T. R. *et al.* Measuring tropical forest carbon allocation and cycling: A RAINFOR-GEM field manual for intensive census plots (v 3.0). *Manual*. (Global Ecosystems Monitoring network, 2014).
61. Phillips, O. L. *et al.* Species matter: wood density influences tropical forest biomass at multiple scales. *Surv. Geophys.* <https://doi.org/10.1007/s10712-019-09540-0> (2019).
62. Baker, T. R. *et al.* Maximising synergy among tropical plant systematists, ecologists, and evolutionary biologists. *Trends Ecol. Evol.* **32**, 258–267 (2017).

Acknowledgements

This study has been partly supported by the IFBN (4000114425/15/NL/FF/gp) and CCI Biomass (4000123662/18/I-NB) projects funded by ESA; the Austrian Federal Ministry of Science and Research (BMWF-4.409/30-II/4/2009); the Austrian Academy of Sciences (ÖAW2007-11); the Research Project AGL2009-08562, Ministry of Science's Research and Development, Spain; the Project LIFE+ “ForBioSensing PL Comprehensive monitoring of stand dynamics in Białowieża Forest supported with remote sensing techniques” cofounded by Life+ UE program (contract number LIFE13 ENV/PL/000048) and The National Fund for Environmental Protection and Water Management in Poland (contract number 485/2014/WN10/OP-NM-LF/D); the Brazilian National Council of Science and Technology (PVE project #401279/2014-6 and PELD (ITER) project #441244/2016-5); USAID (1993–2006); Brazilian National Council of Science and Technology-CNPq (Processes 481097/2008-2, 201138/2012-3); Foundation for Research Support of the State of Sao Paulo-FAPESP (Processes 2013/16262-4, 2013/50718-5). European Research Council Advanced Grant T-FORCES (291585); the Russian State Assignment of the CEPF RAS no. AAAA-A18-118052400130-7. The Russian Science Foundation supported data processing of the plot data from Russia (project no. 19-77-30015). We would like to thank Shell Gabon and the Smithsonian Conservation Biology Institute for funding the collection of the RABI data (contribution

No 172 of the Gabon Biodiversity Program). We would also like to thank Alexander Parada Gutierrez, Javier Eduardo Silva-Espejo, Jon Lloyd, and Olaf Banki for sharing their plot data. JC is funded by Agence Nationale de la Recherche (CEBA, ref. ANR-10-LABX-25-01; TULIP: ANR-10-LABX-0041).

Author Contributions

The co-authors have contributed with their own data and are indicated as principal investigators in the plot table⁵⁸. Stuart Davies, Simon Lewis, Oliver Phillips, Plinio Sist and Dmitry Schepaschenko are coordinating contributing networks and have managed the process of providing specific plot data to the FOS. Maxime Réjou-Méchain, Jérôme Chave and Bruno Hérault have developed the R BIOMASS package. Maxime Réjou-Méchain and Nicolas Labrière have processed the initial tree-level data to the plot-level, as presented in the paper. Christoph Perger and Christopher Dresel developed the database structure and the web interface for the FOS. Dmitry Schepaschenko, Jérôme Chave, Oliver Phillips, Simon Lewis, Maxime Réjou-Méchain have written the paper. Edits and suggestions for improvements were provided by Nicolas Labrière, Bruno Hérault, Florian Hofhansl, Klaus Scipal, Steffen Fritz, Linda See, Sylvie Gourlet-Fleury, Géraldine Derroire, Ted R. Feldpausch, Ruben Valbuena, Krzysztof Stereńczak, Plinio Sist and Wolfgang Wanek. All remaining authors have contributed data to the FOS.

Additional Information

Competing Interests: The authors declare no competing interests.

Publisher's note Springer Nature remains neutral with regard to jurisdictional claims in published maps and institutional affiliations.



Open Access This article is licensed under a Creative Commons Attribution 4.0 International License, which permits use, sharing, adaptation, distribution and reproduction in any medium or format, as long as you give appropriate credit to the original author(s) and the source, provide a link to the Creative Commons license, and indicate if changes were made. The images or other third party material in this article are included in the article's Creative Commons license, unless indicated otherwise in a credit line to the material. If material is not included in the article's Creative Commons license and your intended use is not permitted by statutory regulation or exceeds the permitted use, you will need to obtain permission directly from the copyright holder. To view a copy of this license, visit <http://creativecommons.org/licenses/by/4.0/>.

The Creative Commons Public Domain Dedication waiver <http://creativecommons.org/publicdomain/zero/1.0/> applies to the metadata files associated with this article.

© The Author(s) 2019

Dmitry Schepaschenko^{1,2}, Jérôme Chave³, Oliver L. Phillips⁴, Simon L. Lewis^{4,5}, Stuart J. Davies⁶, Maxime Réjou-Méchain⁷, Plinio Sist^{8,9}, Klaus Scipal¹⁰, Christoph Perger^{1,11}, Bruno Hérault^{8,9,83}, Nicolas Labrière³, Florian Hofhansl¹, Kofi Affum-Baffoe¹², Alexei Aleinikov¹³, Alfonso Alonso¹⁴, Christian Amani¹⁵, Alejandro Araujo-Murakami¹⁶, John Armston^{17,18}, Luzmila Arroyo¹⁹, Nataly Ascarrunz²⁰, Celso Azevedo²¹, Timothy Baker⁴, Radomir Bałazy²², Caroline Bedeau²⁴, Nicholas Berry²⁵, Andrii M. Bilous²⁶, Svitlana Yu. Bilous²⁶, Pulchérie Bissiengou²⁷, Lilian Blanc^{8,9}, Kapitolina S. Bobkova²⁸, Tatyana Braslavskaya¹³, Roel Brienens⁴, David F. R. P. Burslem²⁹, Richard Condit³⁸, Aida Cuni-Sanchez³¹, Dilshad Danilina³², Dennis del Castillo Torres³³, Géraldine Derroire³⁵, Laurent Descroix²⁴, Eleneide Doff Sotta³⁶, Marcus V. N. d'Oliveira³⁷, Christopher Dresel^{1,11}, Terry Erwin³⁹, Mikhail D. Evdokimenko³², Jan Falck⁴⁰, Ted R. Feldpausch⁴¹, Ernest G. Foli⁴², Robin Foster⁴³, Steffen Fritz¹, Antonio Damian Garcia-Abril⁴⁴, Aleksey Gornov¹³, Maria Gornova¹³, Ernest Gothard-Bassébé⁴⁵, Sylvie Gourlet-Fleury^{8,9}, Marcelino Guedes³⁶, Keith C. Hamer⁴⁶, Farida Herry Susanty⁴⁷, Niro Higuchi⁴⁸, Euridice N. Honorio Coronado³³, Wannes Hubau^{4,34}, Stephen Hubbell⁴⁹, Ulrik Ilstedt⁴⁰, Viktor V. Ivanov³², Milton Kanashiro⁵⁰, Anders Karlsson⁴⁰, Viktor N. Karminov¹³, Timothy Killeen⁵¹, Jean-Claude Konan Koffi⁵², Maria Konovalova³², Florian Kraxner¹, Jan Krejza⁵³, Haruni Krisnawati⁴⁷, Leonid V. Krivobokov³², Mikhail A. Kuznetsov²⁸, Ivan Lakyda²⁶, Petro I. Lakyda²⁶, Juan Carlos Licona²⁰, Richard M. Lucas⁵⁴, Natalia Lukina¹³, Daniel Lussetti⁴⁰, Yadvinder Malhi⁵⁵, José Antonio Manzanera⁴⁴, Beatriz Marimon⁵⁶, Ben Hur Marimon Junior⁵⁶, Rodolfo Vasquez Martinez⁵⁷, Olga V. Martynenko⁵⁸, Maksym Matsala²⁶, Raisa K. Matyashuk⁵⁹, Lucas Mazzei⁵⁰, Hervé Memiaghe⁶⁰, Casimiro Mendoza⁶¹, Abel Monteagudo Mendoza⁵⁷, Olga V. Moroziuk²⁶, Liudmila Mukhortova³², Samsudin Musa⁶², Dina I. Nazimova³², Toshinori Okuda⁶³, Luis Claudio Oliveira³⁷, Petr V. Ontikov², Andrey F. Osipov²⁸, Stephan Pietsch¹, Maureen Playfair⁶⁴, John Poulsen⁶⁵, Vladimir G. Radchenko⁵⁹,

Kenneth Rodney⁶⁶, Andes H. Rozak⁶⁷, Ademir Ruschel⁵⁰, Ervan Rutishauser³⁰, Linda See¹, Maria Shchepashchenko⁵⁸, Nikolay Shevchenko¹³, Anatoly Shvidenko^{1,32}, Marcos Silveira⁶⁸, James Singh⁶⁹, Bonaventure Sonké⁷⁰, Cintia Souza²¹, Krzysztof Stereńczak²², Leonid Stonozhenko⁵⁸, Martin J P Sullivan⁴, Justyna Szatniewska⁵³, Hermann Taedoum^{70,71}, Hans ter Steege²³, Elena Tikhonova¹³, Marisol Toledo¹⁹, Olga V. Trefilova³², Ruben Valbuena⁷², Luis Valenzuela Gamarra⁵⁷, Sergey Vasiliev², Estella F. Vedrova³², Sergey V. Verhovets^{73,84}, Edson Vidal⁷⁴, Nadezhda A. Vladimirova⁷⁵, Jason Vleminckx⁷⁶, Vincent A. Vos⁷⁷, Foma K. Vozmitel², Wolfgang Wanek⁷⁸, Thales A. P. West⁷⁹, Hannsjorg Woell⁸⁰, John T. Woods⁸¹, Verginia Wortel⁶⁴, Toshihiro Yamada⁶³, Zamah Shari Nur Hajar⁸² & Irié Casimir Zo-Bi⁸³

¹Ecosystems Services and Management Program, International Institute for Applied Systems Analysis, Laxenburg, A-2361, Austria. ²Forestry faculty, Bauman Moscow State Technical University, Mytitschi, 141005, Russia. ³Laboratoire Evolution et Diversité Biologique CNRS/Université Paul Sabatier, Toulouse, France. ⁴School of Geography, University of Leeds, Leeds, LS2 9JT, UK. ⁵University College London, 30 Guilford Street, London, WC1N 1EH, UK. ⁶Forest Global Earth Observatory, Smithsonian Tropical Research Institute, P.O. Box 37012, Washington 20013, USA. ⁷AMAP, IRD, CNRS, CIRAD, INRA, University Montpellier, Montpellier, France. ⁸CIRAD, Forêts et Sociétés, Campus International de Baillarguet, Montpellier, F-34398, France. ⁹Forêts et Sociétés, Univ Montpellier, CIRAD, Montpellier, F-34398, France. ¹⁰European Space Agency, ESTEC, Noordwijk, The Netherlands. ¹¹Spatial Focus GmbH, Vienna, Austria. ¹²Mensuration Unit, Forestry Commission of Ghana, 4 Third Avenue Ridge, Kumasi, POB M434, Ghana. ¹³Center of Forest Ecology and Productivity of the Russian Academy of Sciences, Profsoyuznaya 84/32/14, Moscow, 117997, Russia. ¹⁴Smithsonian Conservation Biology Institute, 1100 Jefferson Dr SW, Suite 3123, Washington, DC, 20560-0705, USA. ¹⁵Centre for International Forestry Research, CIFOR, Jalan CIFOR, Situ Gede, Bogor, 16115, Indonesia. ¹⁶Universidad Autónoma Gabriel Rene Moreno, Santa Cruz, Bolivia. ¹⁷Department of Geographical Sciences, University of Maryland, 2181 Lefrak Hall, College Park, MD, 20742, USA. ¹⁸Joint Remote Sensing Research Program, School of Earth and Environmental Sciences, University of Queensland, Chamberlain Building (35), Campbell Road, St Lucia Campus, Brisbane, 4072, Australia. ¹⁹Museo de Historia Natural Noel Kempff Mercado, Universidad Autónoma Gabriel Rene Moreno Av. Irala 565 - casilla, 2489, Santa Cruz, Bolivia. ²⁰IBIF, Instituto Boliviano de Investigación Forestal, Av. 6 de agosto # 28, Km 14 doble via La Guardia, Santa Cruz, Casilla, 6204, Bolivia. ²¹Embrapa, Rodovia AM 10, km 29, Manaus, AM, 69010-970, Brazil. ²²Forest Research Institute, Department of Geomatics, Braci Leśnej 3, Sękocin Stary, Raszyn, 05-090, Poland. ²³Naturalis Biodiversity Center, Leiden, The Netherlands. ²⁴ONF, ONF-Réserve de Montabo Cayenne Cedex, Cayenne, BP 7002; 97307, French Guiana. ²⁵The Landscapes and Livelihoods Group, 20 Chambers St, Edinburgh, EH1 1JZ, UK. ²⁶National University of Life and Environmental Sciences of Ukraine, General Rodimtsev 19, Kyiv, 3041, Ukraine. ²⁷Herbier National du Gabon (IPHAMETRA), B.P 1165, Libreville, Gabon. ²⁸Institute of Biology, Komi Scientific Center, Ural Branch of Russian Academy of Sciences, Kommunisticheskaya 28, Syktyvkar, 167982, Russia. ²⁹School of Biological Sciences, University of Aberdeen, Cruickshank Building, St Machar Drive, Aberdeen, AB24 3UU, UK. ³⁰Smithsonian Tropical Research Institute, Balboa, Ancon, Panama 3092, Panama. ³¹Department of Environment and Geography, University of York, Heslington, York, YO10 5NG, UK. ³²V.N. Sukachev Institute of Forest, Siberian Branch of the Russian Academy of Science, Akademgorodok 50(28), Krasnoyarsk, 660036, Russia. ³³Instituto de Investigaciones de la Amazonía Peruana, Av. Abelardo Quiñones km 2.5, Iquitos, Apartado Postal 784, Peru. ³⁴U Gent-Woodlab, Laboratory of Wood Technology, Department of Environment, Ghent University, Ghent, 9000, Belgium. ³⁵CIRAD, UMR EcoFoG, Campus Agronomique - BP 701, Kourou, 97387, France, French Guiana. ³⁶Embrapa, Rodovia Juscelino Kubitschek, Km 5, no 2.600, Macapa, Caixa Postal 10, CEP: 68903-419, Brazil. ³⁷Embrapa, BR 364, Caixa postal 321, Rio Branco, CEP 69.900-970, Brazil. ³⁸Morton Arboretum, 4100 Illinois Rte. 53, Lisle, 60532, IL, USA. ³⁹SI Entomology, Smithsonian Institution, PO Box 37012, MRC 187, Washington, DC, DC 20013-7012, USA. ⁴⁰Department Forest Ecology and Management, The Swedish University of Agricultural Sciences, SLU, Umeå, SE-901 83, Sweden. ⁴¹Geography, College of Life and Environmental Sciences, University of Exeter, Laver Building, North Park Road, Exeter, EX4 4QE, UK. ⁴²Forestry Research Institute of Ghana, UP Box 63, KNUST, Kumasi, Ghana. ⁴³The Field Museum, 1400S Lake Shore Dr, Chicago, IL, 60605, USA. ⁴⁴Universidad Politécnica de Madrid, Calle Ramiro de Maeztu, 7, Madrid, 28040, Spain. ⁴⁵Institut Centrafricain de Recherche Agronomique, ICRA, BP 122, Bangui, Central African Republic. ⁴⁶School of Biology, University of Leeds, Leeds, LS2 9JT, UK. ⁴⁷FOERDIA, Forestry and Environment Research Development and Innovation Agency, Jalan Gunung Batu No 5, Bogor, 16610, Indonesia. ⁴⁸Instituto Nacional de Pesquisas da Amazônia - Coordenação de Pesquisas em Silvicultura Tropical, Manaus, 69060-001, Brazil. ⁴⁹Department of Ecology and Evolutionary Biology, University of California, 621 Charles E. Young Dr. South, Los Angeles, CA, 90095-1606, USA. ⁵⁰Embrapa Amazonia Oriental, Travessa Doutor Enéas Pinheiro, Belém, PA, 66095-903, Brazil. ⁵¹World Wildlife Fund, Calle Diego de Mendoza 299, Santa Cruz de la Sierra, Bolivia. ⁵²Sodefor, boulevard François Mitterrand, Cocody, Abidjan, 01BP 3770, Côte d'Ivoire. ⁵³Global Change Research Institute CAS, Běláidla 986/4a, Brno, 603 00, Czech Republic. ⁵⁴Department of Geography and Earth Sciences, Aberystwyth University, Aberystwyth, SY23 3DB, UK. ⁵⁵School of Geography and the Environment, University of Oxford, Oxford, OX1 3QY, UK. ⁵⁶Laboratório de Ecologia Vegetal, Universidade do Estado de Mato Grosso, UNEMAT, Campus de Nova Xavantina, Nova Xavantina, Mato Grosso, 78.690-000, Brazil. ⁵⁷Jardín Botánico de Missouri; Universidad Nacional de San Antonio Abad del Cusco, Oxapampa, Peru. ⁵⁸Russian Institute of Continuous Education in Forestry, Institutskaya 17, Pushkino, 141200, Russia. ⁵⁹Institute for Evolutionary Ecology of the National Academy of Sciences of Ukraine, Lebedev 37, Kyiv, 03143, Ukraine. ⁶⁰University of Oregon, 1585 E 13th Ave, Eugene, OR, 97403, USA. ⁶¹Forest Management in Bolivia, Sacta,

Bolivia. ⁶²FRIM Forest Reserach Institute of Malaysia, 52109 Kepong, Selangor, Kuala Lumpur, Malaysia. ⁶³Hiroshima University, 1-7-1 Kagamiyama, Higashi-Hiroshima, Hiroshima, 739-8521, Japan. ⁶⁴Center for Agricultural research in Suriname, CELOS, 1914, Paramaribo, Suriname. ⁶⁵Nicholas School of the Environment, Duke University, P.O. Box 90328, Durham, NC, 27708, USA. ⁶⁶IIC, The Iwokrama International Centre for Rain Forest Conservation and Development, 77 High Street, Georgetown, Guyana. ⁶⁷Cibodas Botanic Gardens - Indonesian Institute of Sciences (LIPI), Jl. Kebun Raya Cibodas, Cipanas, Cianjur, 43253, Indonesia. ⁶⁸Museu Universitário, Universidade Federal do Acre, BR 364, Km 04 - Distrito Industrial, Rio Branco, 69915-559, Brazil. ⁶⁹Guyana Forestry Commission, 1 Water Street, Kingston Georgetown, Guyana. ⁷⁰Plant Systematic and Ecology Laboratory, University of Yaoundé I, P.O. Box 047, Yaounde, Cameroon. ⁷¹Bioversity international, P.O. Box 2008, Messa, Yaoundé, Cameroun. ⁷²School of Natural Sciences, Bangor University, Thoday Building. Deiniol Rd, Bangor, LL57 2UW, United Kingdom. ⁷³Siberian Federal University, Svobodnyy Ave, 79, Krasnoyarsk, 660041, Russia. ⁷⁴Department of Forest Sciences, Luiz de Queiroz College of Agriculture, University of Sao Paulo, PO Box 9, Av. Pádua Dias, 11, Piracicaba, São Paulo, 13418-900, Brazil. ⁷⁵State Nature Reserve Denezhkin Kamen, Lenina, 6, Sverdlovsk reg, Severouralsk, 624480, Russia. ⁷⁶International Center for Tropical Botany, Department of Biological Sciences, Florida International University, 11200 S.W. 8th Street, Miami, 33199, FL, USA. ⁷⁷Universidad Autónoma del Beni, Riberalta, Bolivia. ⁷⁸Department of Microbiology and Ecosystem Science, Division of Terrestrial Ecosystem research, University of Vienna, Althanstrasse 14, Vienna, A-1090, Austria. ⁷⁹New Zealand Forest Research Institute (Scion) Te Papa Tipu Innovation Park, 49 Sala Street, Rotorua, 3046, New Zealand. ⁸⁰Unaffiliated (retired), Sommersbergseestrasse 291, Bad Aussee, 8990, Austria. ⁸¹W.R.T College of Agriculture and Forestry, University of Liberia, Capitol Hill, Monrovia, 9020, Liberia. ⁸²FRIM Forest Research Institute of Malaysia, 52109 Kepong, Selangor, Kuala Lumpur, Malaysia. ⁸³Department Foresterie et Environnement (DFR FOREN), Institut National Polytechnique Félix Houphouët-Boigny, INP-HB, Yamoussoukro, BP 2661, Côte d'Ivoire. ⁸⁴Reshetnev Siberian state university of science and technology, pr. Mira 82, Krasnoyarsk, 660049, Russia.