

## Hemoglobin and cerebral hypoxic vasodilation in humans

Hoiland, Ryan L; MacLeod, David B; Stacey, Benjamin S; Caldwell, Hannah G; Howe, Connor A; Nowak-Flück, Daniela; Carr, Jay Mjr; Tymko, Michael M; Coombs, Geoff B; Patrician, Alexander; Tremblay, Joshua C; Van Mierlo, Michelle; Gasho, Chris; Stemberge, Mike; Sekhon, Mypinder S; Bailey, Damian M; Ainslie, Philip N

### Journal of Cerebral Blood Flow and Metabolism

DOI:

[10.1177/0271678X231169579](https://doi.org/10.1177/0271678X231169579)

Published: 01/09/2023

Publisher's PDF, also known as Version of record

[Cyswllt i'r cyhoeddiad / Link to publication](#)

*Dyfyniad o'r fersiwn a gyhoeddwyd / Citation for published version (APA):*

Hoiland, R. L., MacLeod, D. B., Stacey, B. S., Caldwell, H. G., Howe, C. A., Nowak-Flück, D., Carr, J. M., Tymko, M. M., Coombs, G. B., Patrician, A., Tremblay, J. C., Van Mierlo, M., Gasho, C., Stemberge, M., Sekhon, M. S., Bailey, D. M., & Ainslie, P. N. (2023). Hemoglobin and cerebral hypoxic vasodilation in humans: Evidence for nitric oxide-dependent and S-nitrosothiol mediated signal transduction. *Journal of Cerebral Blood Flow and Metabolism*, 43(9), 1519-1531. <https://doi.org/10.1177/0271678X231169579>

#### Hawliau Cyffredinol / General rights

Copyright and moral rights for the publications made accessible in the public portal are retained by the authors and/or other copyright owners and it is a condition of accessing publications that users recognise and abide by the legal requirements associated with these rights.

- Users may download and print one copy of any publication from the public portal for the purpose of private study or research.
- You may not further distribute the material or use it for any profit-making activity or commercial gain
- You may freely distribute the URL identifying the publication in the public portal ?

#### Take down policy

If you believe that this document breaches copyright please contact us providing details, and we will remove access to the work immediately and investigate your claim.

# Hemoglobin and cerebral hypoxic vasodilation in humans: Evidence for nitric oxide-dependent and S-nitrosothiol mediated signal transduction

Journal of Cerebral Blood Flow & Metabolism  
2023, Vol. 43(9) 1519–1531  
© The Author(s) 2023



Article reuse guidelines:  
sagepub.com/journals-permissions  
DOI: 10.1177/0271678X231169579  
journals.sagepub.com/home/jcbfm



Ryan L Hoiland<sup>1,2,3,4</sup> , David B MacLeod<sup>5</sup>, Benjamin S Stacey<sup>6</sup>, Hannah G Caldwell<sup>3</sup> , Connor A Howe<sup>3</sup>, Daniela Nowak-Flück<sup>3</sup>, Jay MJR Carr<sup>3</sup>, Michael M Tymko<sup>3</sup>, Geoff B Coombs<sup>3</sup>, Alexander Patrician<sup>3</sup> , Joshua C Tremblay<sup>3</sup> , Michelle Van Mierlo<sup>7</sup>, Chris Gasho<sup>8</sup>, Mike Stembridge<sup>9</sup>, Mypinder S Sekhon<sup>4,10,11</sup>, Damian M Bailey<sup>6</sup> and Philip N Ainslie<sup>3</sup>

## Abstract

Cerebral hypoxic vasodilation is poorly understood in humans, which undermines the development of therapeutics to optimize cerebral oxygen delivery. Across four investigations (total  $n = 195$ ) we investigated the role of nitric oxide (NO) and hemoglobin-based S-nitrosothiol (RSNO) and nitrite ( $\text{NO}_2^-$ ) signaling in the regulation of cerebral hypoxic vasodilation. We conducted hemodilution ( $n = 10$ ) and NO synthase inhibition experiments ( $n = 11$ ) as well as hemoglobin oxygen desaturation protocols, wherein we measured cerebral blood flow (CBF), intra-arterial blood pressure, and in subsets of participants trans-cerebral release/uptake of RSNO and  $\text{NO}_2^-$ . Higher CBF during hypoxia was associated with greater trans-cerebral RSNO release but not  $\text{NO}_2^-$ , while NO synthase inhibition reduced cerebral hypoxic vasodilation. Hemodilution increased the magnitude of cerebral hypoxic vasodilation following acute hemodilution, while in 134 participants tested under normal conditions, hypoxic cerebral vasodilation was inversely correlated to arterial hemoglobin concentration. These studies were replicated in a sample of polycythemic high-altitude native Andeans suffering from excessive erythrocytosis ( $n = 40$ ), where cerebral hypoxic vasodilation was inversely correlated to hemoglobin concentration, and improved with hemodilution ( $n = 6$ ). Collectively, our data indicate that cerebral hypoxic vasodilation is partially NO-dependent, associated with trans-cerebral RSNO release, and place hemoglobin-based NO signaling as a central mechanism of cerebral hypoxic vasodilation in humans.

<sup>1</sup>Department of Anesthesiology, Pharmacology and Therapeutics, Vancouver General Hospital, University of British Columbia, Vancouver, BC, Canada

<sup>2</sup>Department of Cellular and Physiological Sciences, Faculty of Medicine, University of British Columbia, Vancouver, BC, Canada

<sup>3</sup>Centre for Heart, Lung, and Vascular Health, School of Health and Exercise Sciences, Faculty of Health and Social Development, University of British Columbia Okanagan, Kelowna, BC, Canada

<sup>4</sup>International Collaboration on Repair Discoveries, Vancouver, BC, Canada

<sup>5</sup>Human Pharmacology & Physiology Lab, Department of Anesthesiology, Duke University Medical Center, Durham, NC, USA

<sup>6</sup>Neurovascular Research Laboratory, Faculty of Life Sciences and Education, University of South Wales, Pontypridd, UK

<sup>7</sup>Department of Biomechanical Engineering, University of Twente, Enschede, The Netherlands

<sup>8</sup>Department of Medicine, Division of Pulmonary and Critical Care, Loma Linda University School of Medicine, Loma Linda, CA, USA

<sup>9</sup>Cardiff School of Sport and Health Sciences, Cardiff Metropolitan University, Cardiff, UK

<sup>10</sup>Djavad Mowafaghian Centre for Brain Health, Department of Pathology and Laboratory Medicine, Faculty of Medicine, University of British Columbia, Vancouver, BC, Canada

<sup>11</sup>Division of Critical Care Medicine, Department of Medicine, Vancouver General Hospital, University of British Columbia, Vancouver, BC, Canada

## Corresponding author:

Ryan L Hoiland, Department of Anesthesiology, Pharmacology and Therapeutics, Vancouver General Hospital, Room 2451, Jim Pattison Pavilion, 2nd Floor, 899 West 12th Avenue, Vancouver, BC, V5Z 1M9, Canada.

Email: ryanleohiland@gmail.com

## Keywords

Cerebral blood flow, hemoglobin, hypoxia, nitric oxide, oxygen delivery

Received 9 September 2022; Revised 20 January 2023; Accepted 10 March 2023

## Introduction

Hypoxic vasodilation is a fundamental physiologic function conserved across mammalian species.<sup>1</sup> Integral to the maintenance of systemic oxygen (O<sub>2</sub>) delivery, hypoxic vasodilation is requisite to maintain cerebral homeostasis. A high oxygen demand and limited ability for storage of glycolytic substrate underlies the brain's vulnerability to reductions in oxygen supply. Indeed, complete interruption of cerebral blood flow (CBF), and thus cerebral delivery of oxygen (CDO<sub>2</sub>) precipitates unconsciousness in as little as 4-seconds, with adverse consequences ensuing shortly thereafter.<sup>2</sup> Clinically, optimizing CDO<sub>2</sub> remains an elusive target in the setting of acute ischemic brain diseases (e.g. focal ischemic stroke or global hypoxic-ischemic brain injury), while chronic impairments in cerebral perfusion have been associated with increased risk of neurodegenerative disease.<sup>3</sup> Delineation of the mechanisms regulating cerebral hypoxic vasodilation is necessary to determine future therapies for the optimization of cerebral perfusion.

Nitric oxide (NO) has been demonstrated as a key regulator of cerebral hypoxic vasodilation in animal models.<sup>4,5</sup> S-nitrosohemoglobin, an NO moiety covalently bound to the cysteine 93 residue of the hemoglobin (Hb)  $\beta$ -chain, is now well described to subserve NO-mediated vascular signaling and is a fundamental regulator of hypoxic vasodilation.<sup>6,7</sup> Allosterically dependent, this Hb-based signaling mechanism functions to 'protect' NO during circulation<sup>8</sup> and facilitate export of vasodilatory S-nitrosothiols (RSNO) from the erythrocyte during gas exchange at the tissue level.<sup>7-9</sup> Indeed, pre-clinical studies have established that RSNO release from hemoglobin during circulatory transit across a vascular bed occurs commensurate to oxygen demand.<sup>8,9</sup> Hypoxic vasodilation may also be transduced through a nitrite (NO<sub>2</sub><sup>-</sup>) reductase activity of deoxyhemoglobin,<sup>10</sup> which has also been demonstrated to contribute to vascular reactivity to hypoxia.<sup>11</sup> Yet, limited work in humans has addressed NO-dependent regulation of cerebral hypoxic vasodilation, wherein methodological limitations of previous work have led to inconsistent and irreconcilable findings.<sup>12,13</sup>

Given the apparent multi-dimensional regulation of cerebral hypoxic vasodilation in humans, we conducted a series of four inter-related studies with the central aim of determining the regulation of cerebral hypoxic

vasodilation by Hb and NO. We first aimed to determine the roles that RSNO and NO<sub>2</sub><sup>-</sup> play in cerebral hypoxic vasodilation, and hypothesized *a priori* that the magnitude of cerebral hypoxic vasodilation would be associated with trans-cerebral RSNO release, thus providing evidence for NO-dependency. Second, we aimed to determine the impact of NO synthase inhibition on cerebral hypoxic vasodilation and hypothesized *a priori* that cerebral hypoxic vasodilation would be reduced following NO synthase inhibition. To assess these first two hypotheses, we conducted invasive studies in healthy humans to assess trans-cerebral NO signaling in response to matched levels of hypoxia elicited by hypoxemia (reduced arterial oxygen saturation, SaO<sub>2</sub>) and experimental isovolumic hemodilution (to reduce [Hb]) as well as the influence of pharmacologic NO synthase inhibition on cerebral hypoxic vasodilation. Third, given the influence of Hb on NO bioavailability and signal transduction, we aimed to determine the relationship between [Hb] and cerebral hypoxic vasodilation and hypothesized *a priori* that a lower [Hb] would be associated with a greater cerebral hypoxic vasodilation. To assess our third hypothesis, we measured [Hb] and the magnitude of cerebral hypoxic vasodilation in a cohort of >100 individuals. Finally, we aimed to determine the influence of an elevated [Hb] in patients with excessive erythrocytosis on cerebral hypoxic vasodilation. In keeping with investigations 1-3, we hypothesized *a priori* that a higher [Hb] would be associated with a lesser magnitude of cerebral hypoxic vasodilation, while reducing [Hb] via hemodilution would increase cerebral hypoxic vasodilation. To assess our fourth hypothesis we investigated the relationship between arterial [Hb] and cerebral hypoxic vasodilation in polycythemic high-altitude native Andeans with excessive erythrocytosis prior to and following experimental isovolumic hemodilution. Our results broadly indicate that cerebral hypoxic vasodilation is NO-dependent and RSNO-mediated, whereby arterial [Hb] is inversely related to the magnitude of cerebral hypoxic vasodilation in response to graded hypoxemia.

## Methods

We conducted four separate investigations wherein we examined: 1) the association between RSNOs and cerebral hypoxic vasodilation, 2) the NO-dependence of

cerebral hypoxic vasodilation, 3) the association between [Hb] and cerebral hypoxic vasodilation, and 4) cerebral hypoxic vasodilation in high-altitude native Andeans with and without excessive erythrocytosis. This study adhered to the standards outlined in the Declaration of Helsinki (except registry in a database) and the Canadian Tri-council Policy Statement for Integrity in Research. All protocols and retrospective analyses were approved by the University of British Columbia's Clinical Research Ethics Board (H16-01028; H18-01755; H18-01404; H18-01764), Duke University Institutional Review Board (Protocol: 00091879), and the Universidad Peruana Cayetano Heredia Comité de Ética (no. 101686).<sup>14</sup> All participants read an in-depth study information form, spoke with an investigator, and provided written informed consent prior to participation (in their native language). Some aspects of investigations 1 and 2 have been reported previously (e.g. blood gas data),<sup>15,16</sup> however, the main outcomes reported herein and the hypotheses addressed hold no overlap.

### Investigation 1 – Isovolumic hemodilution

Ten young, healthy males were recruited to participate (Age:  $29 \pm 7$  years; body mass index, BMI:  $23 \pm 2 \text{ kg} \cdot \text{m}^{-2}$ ). Following instrumentation with radial arterial, jugular venous (see Supplemental Figure 1), and ante-cubital venous catheters, participants had  $\geq 20$  minutes to rest while the remaining experimental set-up for monitoring minute ventilation ( $\dot{V}_E$ ), the partial pressures of end-tidal carbon dioxide ( $P_{ETCO_2}$ ) and oxygen ( $P_{ETO_2}$ ), heart rate (HR), radial artery mean arterial pressure (MAP), jugular venous blood pressure (JVBP), and cerebral perfusion pressure (CPP, i.e.  $\text{MAP} - \text{JVBP}$ ) (see Supplemental Methods). Moreover, during each measurement period, vertebral (VA) and internal carotid artery (ICA) blood flow was quantified to determine CBF in conjunction with blood gas analysis (see Supplemental Methods). For each experimental manipulation, end-tidal forcing was utilized to control arterial blood gases. After 5-minutes of eucapnic and normoxic baseline measurements, each participant completed an isocapnic hypoxemia test with targeted arterial oxygen saturation ( $\text{SaO}_2$ ) values of 90, 85, and 75%. Isovolumic hemodilution was then performed, where 10% of whole blood volume was removed and replaced with an equal volume of 5% human serum albumin (Alburex<sup>®</sup> 5%, Canadian Blood Services) in two successive stages, resulting in a total removal and replacement of 20% of whole blood volume. Baseline (eucapnic normoxia) measures were acquired following the first stage of 10% blood removal/replacement, while a second isocapnic hypoxemia trial was conducted following the second stage of hemodilution (see Supplemental Methods). At each baseline

and during each hypoxemia test,  $\dot{V}_E$ ,  $P_{ETCO_2}$ ,  $P_{ETO_2}$ , HR, MAP, JVBP, VA, ICA, and blood sampling measures were performed, with data averaged over the last minute of each stage.

### Investigation 2 – Nitric oxide synthase inhibition

Eleven young, healthy males were recruited to participate (Age:  $25 \pm 5$  years; BMI:  $24 \pm 3 \text{ kg/m}^2$ ). Following instrumentation (consistent with Investigation 1), either a control (volume matched saline, 0.9% NaCl), NO synthase inhibitor ( $N^G$ -monomethyl-L-arginine, L-NMMA) or  $\alpha_1$ -adrenoceptor agonist (phenylephrine,  $n = 5$  subset) infusion was initiated (singled-blinded, counter-balanced design). The L-NMMA infusion was initiated with a 5 mg/kg bolus delivered over 5 min followed by a 50  $\mu\text{g/kg/min}$  maintenance dose throughout the protocol until completion. Phenylephrine was infused at 0.1 to 0.6  $\mu\text{g/kg/min}$  to serve as an equipotent vasoconstrictor control for the L-NMMA trial.<sup>12</sup> During each drug infusion we utilized end-tidal forcing to conduct an isocapnic hypoxemia test with a baseline period (eucapnic normoxia) followed by two hypoxic stages lasting 5-minutes each where  $\text{SaO}_2$  was targeted to 85% and 75%. At baseline and each stage of hypoxemia,  $\dot{V}_E$ ,  $P_{ETCO_2}$ ,  $P_{ETO_2}$ , HR, MAP, JVBP, MCA, PCA, VA, ICA, and blood sampling measures were performed.

**Investigation 3 – Baseline hemoglobin concentration and cerebral hypoxic vasodilation.** We conducted a retrospective analysis of nine experiments wherein participants were instrumented with a radial artery and jugular venous catheter and completed an isocapnic hypoxemia test. From these nine separate experiments conducted between 2004 and 2016, we assessed all data files ( $n = 199$ ) with 134 participants included in our final analysis (79 male, 55 female; Age:  $26 \pm 6$  years; BMI:  $24 \pm 3 \text{ kg/m}^2$ ) (see Supplemental Methods for exclusion criteria). Concurrent arterial and jugular venous blood samples were acquired serially at each stage of hypoxemia, wherein hypoxia was induced utilizing a sequential gas delivery system (RespirAct<sup>®</sup>, Thornhill Medical, Toronto, Canada).<sup>17</sup> Percent changes in CBF were calculated based upon the Fick principle under the assumption that cerebral metabolism of oxygen remains constant during the level of hypoxemia employed in this study<sup>18</sup> (i.e.,  $\text{CBF} \propto a - v\text{DO}_2^{-1}$ ; see Supplemental Methods).

**Investigation 4 – cerebral hypoxic vasodilation in the setting of lifelong hypoxia.** In order to isolate the role of elevations in [Hb] on cerebral hypoxic vasodilation, high-altitude native Andeans with ( $n = 15$ ; all male; Age:  $39 \pm 15$  years; BMI:  $25 \pm 3 \text{ kg/m}^2$ ) and without ( $n = 25$ ;



2 female; Age:  $29 \pm 12$  years; BMI:  $24 \pm 3$  kg/m<sup>2</sup>) excessive erythrocytosis (EE+/EE-) were recruited to participate in the Cerro de Pasco region of Peru (4,300 m above sea-level). Venous blood was collected for the measurement of Hct and [Hb], and CBF was measured with duplex ultrasound. Utilizing an end-tidal forcing system, an isocapnic hypoxemia test was performed in 15 participants, wherein  $P_{ET}O_2$  was targeted to 100 mmHg to restore  $SaO_2$  to normal (i.e. 98%), and then reduced to a  $P_{ET}O_2$  of 50 and 40 mmHg, with each stage lasting 5-minutes following the attainment of steady-state. At each stage,  $\dot{V}_E$ ,  $P_{ET}CO_2$ ,  $P_{ET}O_2$ , HR, MAP, VA, and ICA measures were made (see Supplemental Methods). Further, a subset of six EE+ males were instrumented with a radial artery catheter and completed an isovolumic hemodilution protocol (Age:  $44 \pm 19$  years; BMI:  $25 \pm 3$  kg/m<sup>2</sup>). Therein, 25% of blood volume was removed and replaced with human serum albumin (5%) as described in Investigation 1. Prior to and following hemodilution these participants underwent an isocapnic hypoxemia test as described above.

**Statistical analyses.** For all statistical tests, significance was set at an alpha level of  $\alpha = 0.05$ . Data were assessed for normality using a Shapiro-Wilk test. Normal data are reported as mean  $\pm$  standard deviation. When data significantly differed from a normal distribution, non-parametric analyses were employed and data are presented as median [interquartile range]. Across all investigations, pre vs. post intervention or between group comparisons were performed using two-tailed t-tests or non-parametric equivalents (Mann Whitney U test or Wilcoxon Signed Ranks test). Responses during hypoxemia tests prior to and following an intervention were made using linear mixed models or two-way ANOVAs. Finally, correlational analyses were conducted with Pearson r correlations or repeated measures correlations.<sup>19</sup> See Supplemental Methods.

## Results

### Investigation 1 – Cerebral hypoxic vasodilation is associated with trans-cerebral S-nitrosothiol release

We utilized our isovolumic hemodilution protocol to match changes in  $CaO_2$  between hypoxic and anemic stages of hypoxia. Neither  $PaO_2$  ( $93.3 \pm 4.0$  vs.  $92.4 \pm 4.4$  mmHg;  $P = 0.27$ ) nor  $SaO_2$  ( $97.6 \pm 0.4$  vs.  $97.6 \pm 0.6\%$ ;  $P = 0.75$ ) were altered pre-to post hemodilution (Figure 1(a) and (b)). However, the reduction in [Hb] from  $14.2 \pm 0.9$  to  $11.3 \pm 0.5$  mL/dL ( $P < 0.001$ ) led to a  $20 \pm 2\%$  reduction in  $CaO_2$  ( $19.3 \pm 1.1$  vs.  $15.4 \pm 0.7$  mL/dL;  $P < 0.001$ ) (Figure 1(c) and (d)).

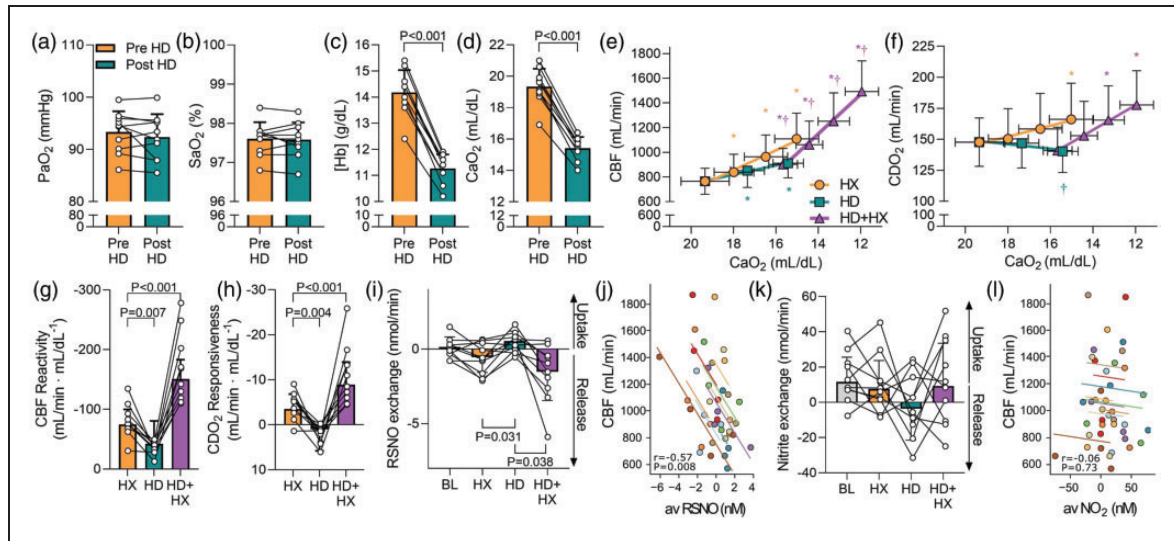
There was a  $19 \pm 7\%$  increase in CBF following hemodilution ( $765 \pm 105$  vs.  $912 \pm 120$  mL/min;  $P < 0.001$ ).

The CBF and  $CDO_2$  responses during the three hypoxic tests are depicted in Figure 1(e) and (f). The CBF reactivity to hypoxemia prior to hemodilution was  $-74.8 \pm 25.0$  mL/min  $\cdot$  mL/dL<sup>-1</sup>. Reactivity to anemic hypoxia (the hemodilution protocol) was  $-42.1 \pm 38.4$  mL/min<sup>-1</sup>  $\cdot$  mL/dL<sup>-1</sup>,  $\sim 45\%$  lower than that during hypoxemia ( $P = 0.007$ ). Reactivity to hypoxemia following hemodilution was  $\sim 100\%$  greater than hypoxemia prior to isovolumic hemodilution ( $-150.6 \pm 32.4$  mL/min  $\cdot$  mL/dL<sup>-1</sup>;  $P < 0.001$ ; Figure 1(g)). Inclusion of CPP as a covariate did not alter these differences. The slope response of  $CDO_2$  (i.e.  $CDO_2$  reactivity) to hypoxemia prior to hemodilution was  $-3.5 \pm 3.3$  mL/min  $\cdot$  mL/dL<sup>-1</sup>. Conversely, hemodilution caused a progressive decrease in  $CDO_2$  in concert with  $CaO_2$  ( $CDO_2$  reactivity,  $1.0 \pm 4.8$  mL/min  $\cdot$  mL/dL<sup>-1</sup>;  $P = 0.004$ ). Indeed,  $CDO_2$  was lower during anemic hypoxia ( $140.3 \pm 17.0$  mL/dL) compared to hypoxemia ( $166.1 \pm 29.2$  mL/dL;  $P = 0.001$ ; Figure 1(e)) despite matched  $CaO_2$ . Finally,  $CDO_2$  reactivity to hypoxemia following hemodilution was  $\sim 150\%$  greater than pre hemodilution ( $-8.9 \pm 5.0$  mL/min  $\cdot$  mL/dL<sup>-1</sup>;  $P < 0.001$ ; Figure 1(h)).

Cerebral release of RSNO was greater during both the final stage of hypoxemia pre-hemodilution ( $-0.54 \pm 1.03$  nmol/min;  $P = 0.031$ ) and final stage of hypoxemia post-hemodilution ( $-1.51 \pm 1.92$  nmol/min;  $P = 0.038$ ) compared to the final stage of hemodilution ( $0.54 \pm 0.66$  nmol/min) (Figure 1(i)). This was reflected in a correlation<sup>19</sup> between the magnitude of the cerebral a-v RSNO difference and CBF ( $r = -0.57$ ;  $P = 0.0080$ ; Figure 1(j)). No differences in the cerebral net exchange of  $NO_2^-$  were observed ( $P = 0.30$ ; Figure 1(k)) and there was no relationship between the a-v  $NO_2^-$  difference and CBF ( $r = -0.06$ ;  $P = 0.73$ ; Figure 1(l)).

### Investigation 2 – Nitric oxide synthase inhibition reduces cerebral hypoxic vasodilation

Arterial plasma total NO ( $NO_2^- + RSNO$ ) was 23% lower in the L-NMMA trial compared to saline ( $77.1 \pm 39.9$  vs.  $100.4 \pm 33.8$  nM;  $P = 0.041$ ; Figure 2(a)). We effectively matched  $PaO_2$  ( $P = 0.14$ ) and  $CaO_2$  ( $P = 0.43$ ) between the saline and L-NMMA hypoxemia tests while maintaining isocapnia ( $P = 0.45$ ). Given the vasoconstrictor influence of NO synthase inhibition, CPP was elevated during L-NMMA infusion compared to saline ( $P < 0.001$ ; Figure 2(b)). Isocapnic hypoxemia increased CBF from baseline (eucapnic normoxia) for both trials (main effect,  $P < 0.001$ ; Figure 2(c)), yet,  $CDO_2$  was lower during L-NMMA infusion compared to saline ( $P = 0.002$ ; Figure 2(d)). The CBF reactivity was 24% lower



**Figure 1.** Cerebral hypoxic vasodilation is associated with trans-cerebral release of S-nitrosothiols. Panels (a–d) depict PaO<sub>2</sub>, SaO<sub>2</sub>, [Hb], and CaO<sub>2</sub> at baseline pre- and post-hemodilution, respectively. Panel e depicts CBF during each stage across all trials. CBF increased at each stage of hypoxemia (HX), hemodilution (HD), and combined hemodilution and hypoxemia (HD + HX) compared to their respective eucapnic and normoxic baselines ( $P < 0.05$  for all). Further, CBF was higher at each stage of combined HD + HX compared to each SaO<sub>2</sub> matched stage of HX ( $P < 0.05$  for all). Panel f depicts CDO<sub>2</sub> during each stage across all trials. CDO<sub>2</sub> was increased from baseline ( $148 \pm 19$  mL/min) at the third HX stage ( $166 \pm 29$  mL/min;  $P = 0.002$ ), while CDO<sub>2</sub> was lower at the third HD stage compared to the CaO<sub>2</sub> matched HX stage ( $140 \pm 17$  mL/min;  $P = 0.001$ ). Similarly, following hemodilution, hypoxemia increased CDO<sub>2</sub> from the post-hemodilution baseline ( $141 \pm 19$  mL/min) at the second ( $166 \pm 28$  mL/min;  $P < 0.001$ ) and third stage of hypoxemia ( $178 \pm 28$  mL/min;  $P < 0.001$ ). Panels g and h depict the individual CBF and CDO<sub>2</sub> slope responses to reductions in CaO<sub>2</sub> across each trial, respectively. Panels i and k depict the trans-cerebral exchange of S-nitrosothiols (RSNO) and NO<sub>2</sub><sup>-</sup> at baseline and the final stage of the HX, HD, and HD + HX trials, respectively and Panels j and l depict the repeated measures correlation analyses between CBF and the arterial-venous differences of RSNO and NO<sub>2</sub><sup>-</sup>, respectively. Different color symbols and regression lines represent different participants.  $N = 10$  for all comparisons. An asterisk (\*) indicates a significant difference from baseline within a stage, while a dagger symbol (†) indicates a difference between trials (compared to HX) for a matched CaO<sub>2</sub> (i.e. HX vs HD comparisons) or SaO<sub>2</sub> (i.e. HX vs HD + HX comparisons). Significance was set at  $P < 0.05$ . Comparisons without an associated p-value or symbol were not significant.

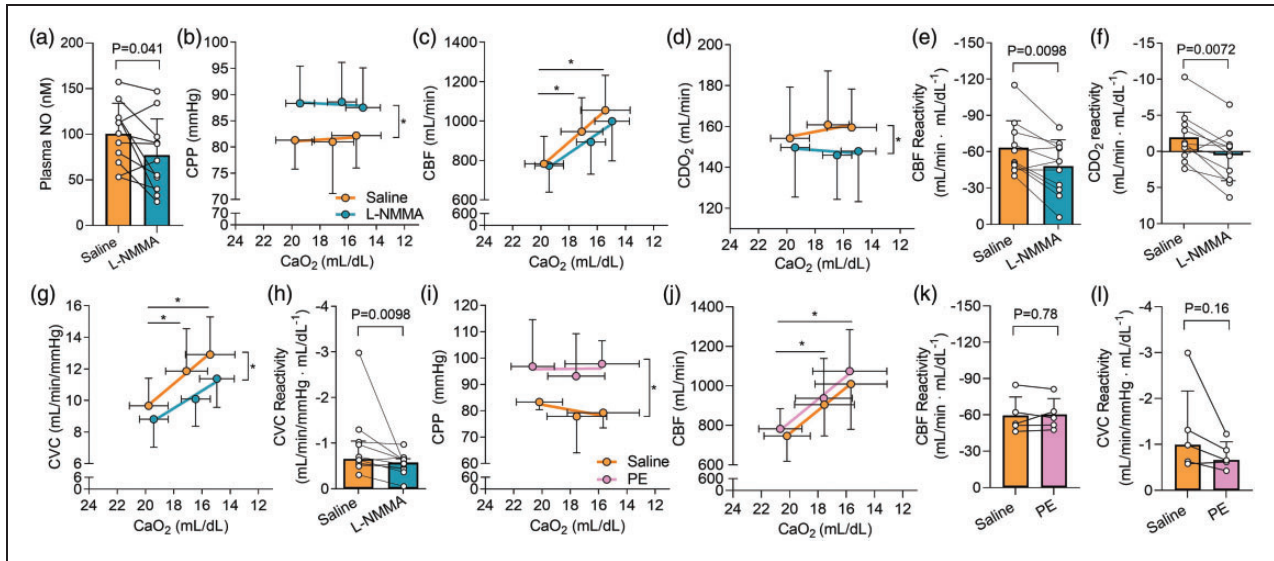
during L-NMMA infusion compared to saline infusion ( $-63.3 \pm 22.3$  vs.  $-48.2 \pm 21.9$  mL/min · mL/dL<sup>-1</sup>;  $P = 0.0098$ ; Figure 2(e)). Moreover, CDO<sub>2</sub> reactivity was 125% lower during L-NMMA infusion than with saline ( $0.49 \pm 3.54$  vs.  $-1.96 \pm 3.47$  mL/min · mL/dL<sup>-1</sup>;  $P = 0.0072$ ; Figure 2(f)). As CPP was higher with L-NMMA, and to account for individual participant differences in CPP, we calculated cerebrovascular conductance (CVC) (Figure 2(g)), and the slope response of CVC to hypoxemia was 41% lower during L-NMMA infusion compared to saline infusion ( $-0.94 \pm 0.74$  vs.  $-0.56 \pm 0.23$  mL/min/mmHg · mL/dL<sup>-1</sup>;  $P = 0.0098$ ; Figure 2(h)).

We assessed the influence of phenylephrine infusion, a vasoconstrictor control, on cerebral hypoxic vasodilation compared to saline. Phenylephrine led to a higher CPP compared to saline ( $P < 0.001$ ; Figure 2(i)). However, while CBF was increased with hypoxemia ( $P < 0.001$ ), there was no difference in CBF between saline and phenylephrine trials ( $P = 0.147$ ; Figure 2(j)). Ultimately, neither CBF reactivity

( $-59.6 \pm 15.3$  vs.  $-60.4 \pm 13.1$  mL/min · mL/dL<sup>-1</sup>;  $P = 0.78$ ; Figure 2(k)) or CVC reactivity ( $-0.99$  [ $-2.16$ – $-0.61$ ] vs.  $-0.66$  [ $-1.06$ – $-0.53$ ] mL/min/mmHg · mL/dL<sup>-1</sup>;  $P = 0.125$ ; Figure 2(l)) were different between saline and phenylephrine trials.

### Investigation 3 – Lower hemoglobin concentration is associated with increased cerebral hypoxic vasodilation

In Investigation 1, the CBF response to hypoxemia following hemodilution (i.e. during concurrent anemia) was greater than pre-hemodilution, indicating a modulatory role of [Hb] in the regulation of cerebral hypoxic vasodilation. To confirm this, we assessed the potential relationship between [Hb] and cerebral hypoxic vasodilation across a larger cohort of individuals. As we have previously demonstrated the stability of CMRO<sub>2</sub> during equivalent hypoxemia,<sup>18</sup> and herein confirm in 23 participants (from studies 1 & 2; Figure 3(a)) that CMRO<sub>2</sub> is unaltered with hypoxemia ( $P = 0.892$ ), we



**Figure 2.** Nitric oxide synthase inhibition reduces cerebral hypoxic vasodilation in response to progressive hypoxemia. Panel a depicts plasma NO ( $\text{NO}_2^- + \text{RSNO}$ ) at baseline during saline (orange) and L-NMMA infusion (cyan). Panels b–d depict CPP, CBF, and  $\text{CDO}_2$  in response to hypoxemia during the saline and L-NMMA infusion. Panels e and f depict the magnitude of cerebral hypoxic vasodilation (i.e. CBF reactivity) and  $\text{CDO}_2$  response to hypoxemia during the saline and L-NMMA infusions. Panels g and h depict the changes in CVC with hypoxemia and resulting CVC reactivity slopes, respectively, during saline and L-NMMA infusion. To take into account the known vasopressor influence of L-NMMA, we ran an equipotent vasoconstrictor control trial with phenylephrine (PE) in 5 participants. Panels i and j depict cerebral perfusion pressure (CPP) and CBF in response to hypoxemia during both saline (orange) and phenylephrine trials (pink) and Panels k and l depict the CBF and CVC reactivity, respectively, during saline and phenylephrine infusion. Bar graphs represent mean  $\pm$  standard deviation with individual data overlaid. Line plots represent mean  $\pm$  standard deviation.  $N = 11$  for statistical testing between saline and L-NMMA, while  $n = 5$  for statistical testing between saline and phenylephrine. For panels b, c, d, g, i, & j, an asterisk (\*) indicates a significant main effect of either stage of hypoxemia or drug infusion ( $P < 0.05$ ). Comparisons without an associated p-value or symbol were not significant.

are able to infer percent changes in CBF from changes in the a-v $\text{DO}_2$  (see Supplemental Methods). Therefore, in 134 individuals (79 male, 55 female; see Supplemental Table 2 for details) we retrospectively analyzed arterial and jugular venous blood gas data to calculate a-v $\text{DO}_2$  (Figure 3(b)) and percent changes in CBF during hypoxemia (Figure 3(c)). Males had a higher [Hb] ( $14.8 \pm 1.0$  g/dL) compared to females ( $13.1 \pm 1.2$  g/dL;  $P = 4.3 \times 10^{-14}$ ; Figure 3(d)), but lower cerebral hypoxic vasodilation ( $-6.9 \pm 2.1$  vs.  $-8.3 \pm 2.7\% \Delta \text{CBF} \cdot \text{mL/dL}^{-1}$ ;  $P = 0.0014$ ; Figure 3(e)). Across all individuals we observed an inverse relationship between cerebral hypoxic vasodilation and [Hb] ( $r^2 = 0.12$ ;  $P < 0.01$ ; Figure 3(f)). This relationship remained evident when males were assessed independently ( $r^2 = 0.25$ ;  $P < 0.01$ ; Figure 3(f)); however, it was absent in the female participants ( $r^2 = 0.01$ ;  $P = 0.50$ ; Figure 3(f)).

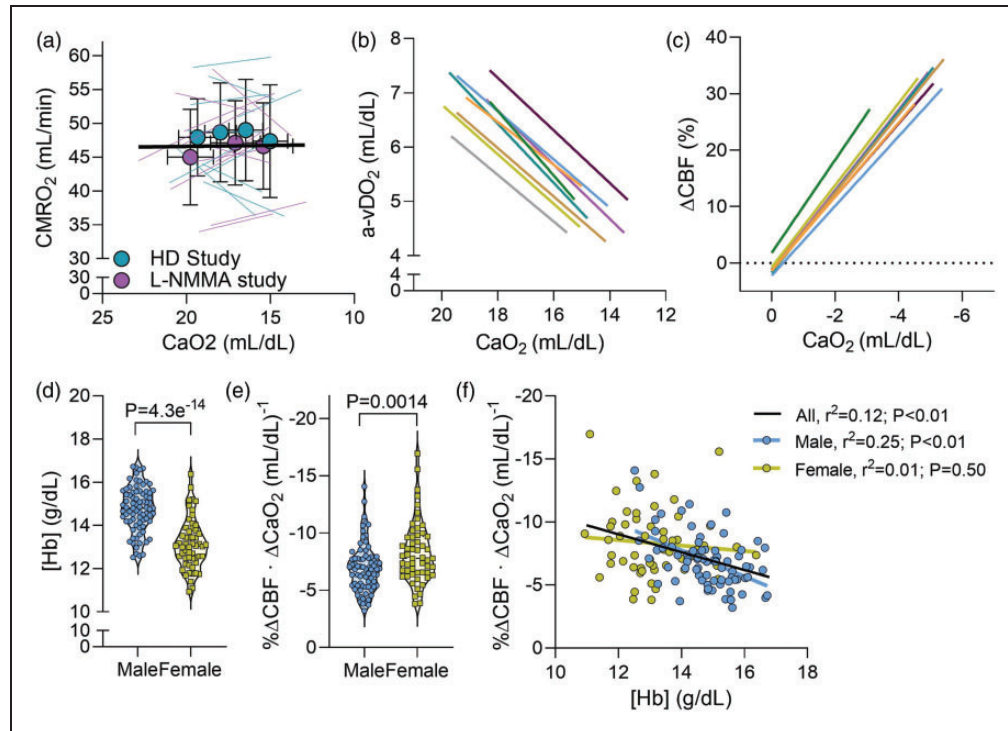
#### Investigation 4 – Reductions in hemoglobin concentration increase cerebral hypoxic vasodilation in patients with excessive erythrocytosis

To translate our findings from Investigations 1–3 to a clinical population we assessed the potential

relationship between [Hb] and cerebral hypoxic vasodilation in high-altitude native Andeans with and without excessive erythrocytosis.<sup>20</sup> The EE+ participants had a [Hb] of 21.8 [21.4–23.9] g/dL while the EE- participants had a [Hb] of 18.7 [17.3–19.5] g/dL ( $P = 2.4 \times 10^{-9}$ ; Figure 4(a)), which corresponded to a higher  $\text{CaO}_2$  ( $P = 5.7 \times 10^{-6}$ ; Figure 4(b)). Neither CBF (516 [445–661] vs. 512 [465–682] mL/min;  $P = 0.93$ ; Figure 4(c)) nor  $\text{CDO}_2$  (115 [99–138] vs. 123 [116–157] mL/min;  $P = 0.11$ ; Figure 4(d)) differed between the EE- and EE+ groups. There was no correlation between  $\text{CaO}_2$  and CBF at rest ( $r = 0.133$ ;  $P = 0.45$ ; Figure 4(e)). However, in agreement with our observations in Investigation 3 (Figure 3(f)), we observed an inverse relationship between arterial [Hb] and CBF reactivity ( $r = -0.617$ ;  $P = 0.014$ ; Figure 4(f)).

To assess the influence of reducing [Hb] on CBF reactivity, 6 of the EE+ patients underwent isovolumic hemodilution. This led to a reduction in [Hb] (Figure 4 (g)) and  $\text{CaO}_2$  (Figure 4(j)), while  $\text{SaO}_2$  was unaltered (Figure 4(i)) despite a nominal reduction in  $\text{PaO}_2$  (Figure 4(h)). Isovolumic hemodilution was associated with a  $22 \pm 13\%$  increase in CBF ( $616.1 \pm 79.9$  vs.





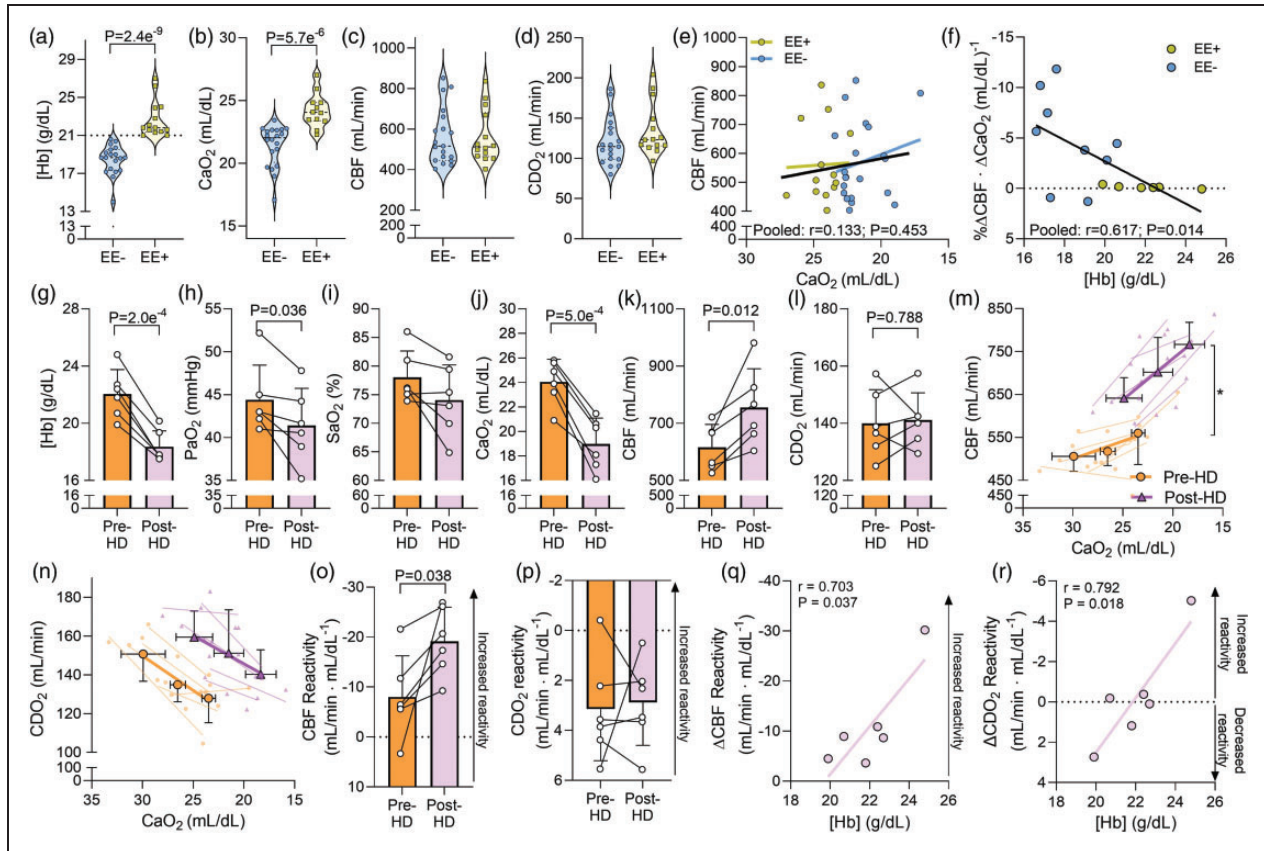
**Figure 3.** Association between hemoglobin concentration and cerebral hypoxic vasodilation. Panel a depicts the cerebral metabolic rate of oxygen ( $CMRO_2$ ) in the 21 participants combined from the hemodilution study (HD Study; cyan) and the nitric oxide synthase inhibition study (L-NMMA Study; magenta). Mean  $\pm$  standard deviation is presented for each study, overlaid on individual participant responses. The black line represents the overall linear regression for the entire  $n = 21$  sample (linear mixed model analysis). Panel b depicts the relationship between  $CaO_2$  and the  $a-vDO_2$  during progressive hypoxemia for each study included in this analysis (a different colour indicates a different study). These data are collated from nine separate studies conducted by our group over the last two decades (see Supplemental Methods). As per the Fick Principle ( $CMRO_2 = a-vDO_2 \times CBF$ ), in the setting of a constant metabolism, CBF is inversely proportional to  $a-vDO_2$  ( $a-vDO_2 \propto 1/CBF$ ). Thus, the percent change in CBF can be determined, as depicted in Panel c. Panel d and e depict  $[Hb]$  and the magnitude change in CBF change per unit reduction in  $CaO_2$  (i.e. magnitude of cerebral hypoxic vasodilation), respectively for both males (blue symbols;  $n = 79$ ) and females (yellow symbols;  $n = 55$ ). The relationship between  $[Hb]$  and the magnitude of cerebral hypoxic vasodilation is depicted in Panel f. The black line represents the regression for all individuals, while the blue and yellow regressions are specific to the male and female participants, respectively.  $N = 134$ . Comparisons without an associated p-value or symbol were not significant.

$755.3 \pm 135.2$  mL/min;  $P = 0.012$ ; Figure 4(k)) whereas  $CDO_2$  did not change (Figure 4(l)). In response to hypoxemia, CBF was increased prior to and following isovolumic hemodilution (main effect,  $P = 0.005$ ; Figure 4(m)) while  $CDO_2$  decreased (main effect,  $P = 0.001$ ; Figure 4(n)) both before and after hemodilution. However, comparison of reactivity slopes demonstrated that isovolumic hemodilution increased CBF reactivity by  $\sim 140\%$  ( $-8.0 \pm 8.2$  vs.  $-19.2 \pm 6.8$  mL/min  $\cdot$  mL/dL $^{-1}$ ;  $P = 0.038$ ; Figure 4(o)), despite an unaltered  $CDO_2$  reactivity ( $P = 0.812$ ; Figure 4(p)). Individual changes in CBF and  $CDO_2$  reactivity were correlated to pre-hemodilution  $[Hb]$ , whereby a higher  $[Hb]$  prior to hemodilution was associated with a greater improvement in CBF and  $CDO_2$  reactivity following isovolumic hemodilution (Figure 4(q) and (r)).

## Discussion

Our investigations demonstrate that cerebral hypoxic vasodilation is nitric oxide-dependent, associated with trans-cerebral release of *S*-nitrosothiols, and inversely related in magnitude to arterial hemoglobin concentration. Specifically, we demonstrated that: 1) greater trans-cerebral release of *S*-nitrosothiols during hypoxia is associated greater cerebral blood flow; 2) cerebral hypoxic vasodilation is reduced by 25% following nitric oxide synthase inhibition; 3) the magnitude of cerebral hypoxic vasodilation is inversely correlated to arterial hemoglobin concentration; 4) reducing arterial hemoglobin concentration in the setting of excessive erythrocytosis increases cerebrovascular reactivity to hypoxia. Collectively, our integrated approach implicates nitric oxide as a primary regulator of cerebral hypoxic vasodilation in humans.

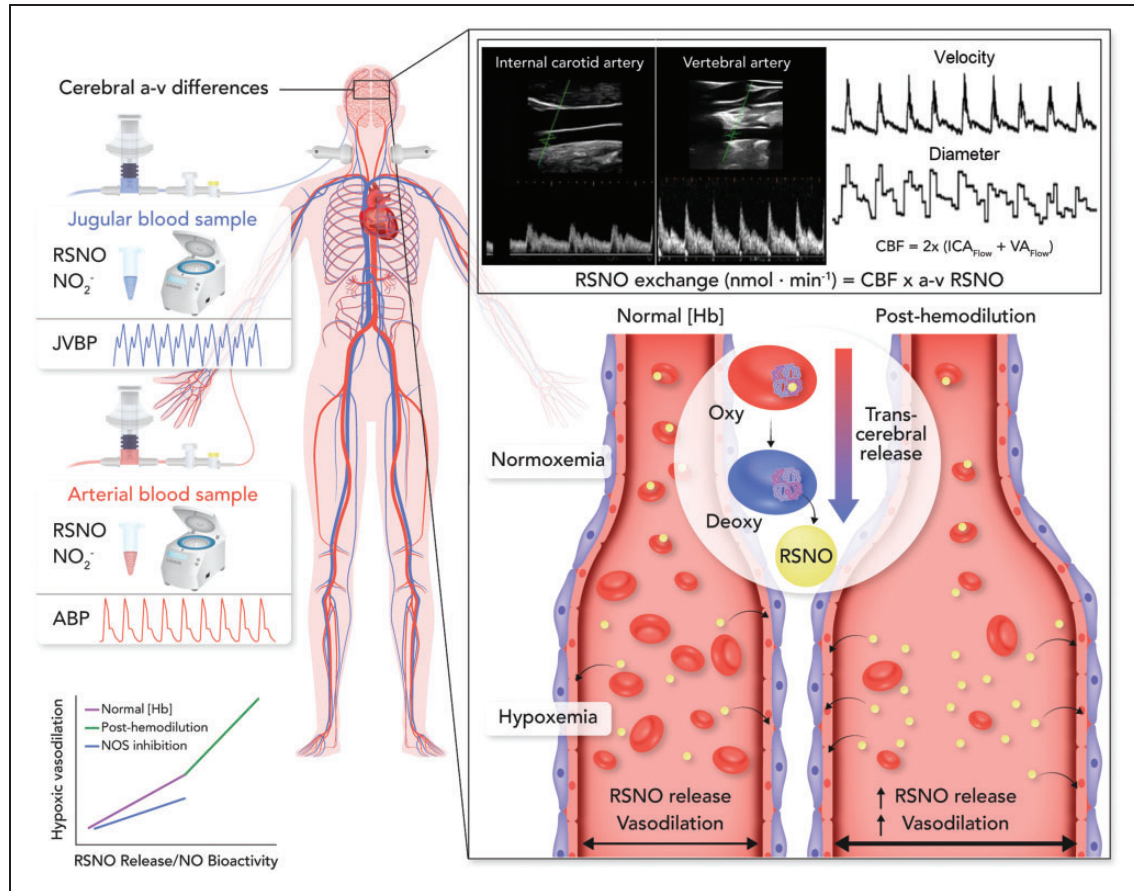




**Figure 4.** Isovolumic hemodilution increases cerebral hypoxic vasodilation in high-altitude Andeans with excessive erythrocytosis. Panels a–d depict violin plots of hemoglobin concentration [Hb], arterial oxygen content ( $\text{CaO}_2$ ), cerebral blood flow (CBF), and cerebral delivery of oxygen ( $\text{CDO}_2$ ) for high-altitude native Andeans without (EE–,  $n = 19$ ) and with (EE+,  $n = 14$ ) excessive erythrocytosis. Panel e depicts the relationship between  $\text{CaO}_2$  and CBF under resting conditions ( $r = 0.133$ ;  $P = 0.45$ ), while Panel f depicts the relationship between [Hb] and CBF reactivity in a subset of the Andean participants with ( $n = 6$ ) and without EE ( $n = 9$ ). Panels g to m depict bar graphs (mean  $\pm$  standard deviation) with individual data overlaid for [Hb], the partial pressure of arterial oxygen ( $\text{PaO}_2$ ), arterial oxygen saturation ( $\text{SaO}_2$ ),  $\text{CaO}_2$ , CBF, and  $\text{CDO}_2$ , respectively, prior to and following isovolumic hemodilution (HD) in the EE+ group ( $n = 6$ ). Panels m and n display CBF and  $\text{CDO}_2$  during graded hypoxemia (reduced  $\text{CaO}_2$ ) prior to and following isovolumic hemodilution, respectively and Panels o and p depicts the CBF and  $\text{CDO}_2$  reactivity, respectively, while Panels q and r depict the relationship between the change in CBF and  $\text{CDO}_2$  reactivity following hemodilution with the pre-hemodilution [Hb]. An asterisk (\*) indicates a significant main effect of isovolumic hemodilution ( $P < 0.05$ ). Comparisons without an associated p-value or symbol were not significant.

To what extent NO contributes to cerebral hypoxic vasodilation in humans has remained equivocal. Albeit limited evidence, prior studies employing an NO synthase blockade have demonstrated reductions<sup>13</sup> or no impact<sup>12</sup> on cerebral hypoxic vasodilation, potentially due in part to technical limitations of measuring intracranial blood velocity and not flow. We provide clear evidence that NO synthase inhibition reduced cerebral hypoxic vasodilation (Figure 2). As the 23% reduction in plasma total NO with the L-NMMA infusion is not indicative of complete NOS inhibition, the observed 24% reduction in cerebral hypoxic vasodilation with L-NMMA likely underestimates the true magnitude by which NO contributes to cerebral hypoxic vasodilation in humans. This observation is consistent with our

hemodilution study where we used differing hypoxic interventions of hypoxemia and hemodilution to elicit  $\text{CaO}_2$  matched levels of hypoxia with differing trans-cerebral RSNO release. We conducted an additional hypoxic test in the setting of acute anemia (i.e. combined hemodilution and hypoxemia) to investigate the influence of reductions in [Hb] on cerebral hypoxic vasodilation and trans-cerebral RSNO release. During these studies we simultaneously collected arterial and jugular bulb blood samples to quantify the arterial-to-venous differences of NO species (RSNO &  $\text{NO}_2^-$ ) as well as Duplex ultrasound measures to quantify CBF and subsequently calculate the trans-cerebral exchange of RSNO and  $\text{NO}_2^-$  (Figure 5). Across these conditions we observed that the largest



**Figure 5.** Assessing trans-cerebral exchange kinetics in humans. This schematic depicts our experimental model for assessing the trans-cerebral exchange of signaling molecules (e.g. nitric oxide) in humans. Cerebral arterial-to-venous (a-v) differences were quantified using concurrent arterial and jugular bulb blood sampling. Coupling of the a-v difference of S-nitrosothiols (RSNOs) and cerebral blood flow (CBF) measures acquired with duplex ultrasound allows for the quantification of the molar exchange of RSNOs during cerebral circulatory transit. This model of simultaneous arterial and jugular bulb blood sampling allows for experimental isolation of the cerebrovascular bed during a systemic stressor such as arterial hypoxemia or hemodilution and a more specific assessment of the signaling pathways involved in cerebrovascular control. In the present study we investigated the trans-cerebral exchange kinetics of RSNOs and  $\text{NO}_2^-$  during arterial hypoxemia, hemodilution, and hypoxemia post-hemodilution. As RSNOs are released from the red blood cell following the allosteric shift from the relaxed (oxygenated) to tense (deoxygenated) conformation, an increase in RSNOs in the venous circulation and thus greater a-v difference is taken to indicate greater release from red blood cells during cerebral circulatory transit. The increase in CBF during arterial hypoxemia in participants with a lower [Hb] as well as those tested post-hemodilution (right side vessel) was greater than in participants with a normal [Hb] and those tested prior to hemodilution (left side vessel). A greater CBF response (i.e. greater cerebral hypoxic vasodilation) was associated with greater trans-cerebral release of RSNOs. The CBF response to hypoxemia was blunted following nitric oxide synthase blockade (bottom left panel). ABP, arterial blood pressure; JVBP, jugular venous blood pressure; NOS, nitric oxide synthase.

increases in CBF (during hypoxemia and combined hemodilution and hypoxemia) were associated with the greatest RSNO release, while the lowest increase in CBF (during hemodilution) was associated with no net trans-cerebral exchange of RSNO (Figure 1). Indeed, as is the case in pre-clinical studies where hemodilution does not increase cyclic guanosine monophosphate (which is a secondary messenger downstream of NO signaling),<sup>21</sup> the reduction in reactivity observed here was linked to a reduction in RSNO-mediated signaling.

The observation that the magnitude of cerebral hypoxic vasodilation was associated with the magnitude of trans-cerebral RSNO release is in agreement with work by Stamler's group.<sup>7</sup> SNO-Hb-mediated hypoxic vasodilation has been demonstrated in pre-clinical *ex vivo*<sup>22</sup> and *in vivo* models,<sup>8,9</sup> and verified with genetic knock-outs.<sup>1,23</sup> In humans, however, we saw no such relationship between trans-cerebral exchange of  $\text{NO}_2^-$  and cerebral hypoxic vasodilation. An important limitation to consider is that we did not conduct analysis of red blood cell  $\text{NO}_2^-$  or iron nitrosylhemoglobin (HbNO),

and cannot directly account for reduction of  $\text{NO}_2^-$  within the red blood cell (i.e. a trans-cerebral reduction in red blood cell  $\text{NO}_2^-$ ). Nonetheless, this lack of relationship with trans-cerebral  $\text{NO}_2^-$  release and CBF is relevant given hemoglobin-based  $\text{NO}_2^-$ -dependent vasodilation has been demonstrated in other vascular beds.<sup>24</sup> Indeed, while there is contention regarding whether hemoglobin mediated RSNO,<sup>7</sup>  $\text{NO}_2^-$ ,<sup>25</sup> or ATP<sup>26</sup> signaling are the primary hypoxic vasodilatory signal<sup>1,23,27-30</sup> – particularly in *ex vivo* and animal models – our data in humans support the hemoglobin-based RSNO mechanism of vasodilation as a primary regulator of cerebral hypoxic vasodilation.

While the focus of our investigations was to assess the role of NO in regulating cerebral hypoxic vasodilation, the role of other prototypical vasodilators should not be disregarded. Previous studies conducted in humans have largely demonstrated that neither adenosine,<sup>31</sup> prostaglandins,<sup>32-34</sup> or reactive oxygen species,<sup>35,36</sup> are obligatory for cerebral hypoxic vasodilation. However, Harrell and colleagues recently demonstrated that combined prostaglandin synthesis inhibition and ascorbic acid infusion results in a marked blunting of cerebral hypoxic vasodilation in humans (albeit with transcranial doppler blood velocity estimates of CBF), highlighting that ‘redundancy’ of vasodilatory pathways may underscore the lack of effect from vasodilator pathway blockades typically observed in human studies.<sup>35</sup> Moreover, ATP sensitive potassium channels, which are influenced downstream of NO signaling by cyclic guanosine monophosphate, have been demonstrated to contribute to cerebral hypoxic vasodilation in humans.<sup>37</sup> That ATP sensitive potassium channel blockade reduces cerebral hypoxic vasodilation further supports the role of NO observed in our study, although its effect may have manifested through the multiple other pathways that converge on ATP sensitive potassium channels.<sup>38</sup> Therefore, while it is difficult to disentangle vasodilatory mechanisms in humans given the multiple levels of cross-talk that occur downstream of the ‘surface level’ pharmacological blockades that are safe to employ (e.g. adenosine receptor antagonism or prostaglandin synthesis inhibition),<sup>38</sup> our results link physiologic changes in cerebral hypoxic vasodilation with alterations in NO bioavailability and trans-cerebral RSNO release in humans.

Following our observation that acute anemia (i.e. isovolumic hemodilution) augments the magnitude of cerebral hypoxic vasodilation for a given reduction in  $\text{CaO}_2$  (Figure 1(g)), and that this augmented cerebral hypoxic vasodilation was linked to greater trans-cerebral RSNO release (Figure 1(i) and (j)), we investigated this relationship further. Consistent across two separate investigations, we determined that a lower Hb concentration is associated with increased cerebral

hypoxic vasodilation in both lowlanders (Figure 3(f)) and Andean highlanders (Figure 4(f)). Further, and consistent with investigation 1, an acute reduction in [Hb] (i.e. isovolumic hemodilution) led to an increase in cerebral hypoxic vasodilation in Andean highlanders with excessive erythrocytosis (Figure 4(o)). In both isovolumic hemodilution studies (investigation 1 & 4), the augmented cerebral hypoxic vasodilation may be explained by the greater level of hypoxia, which coincides with potentiated RSNO-mediated vasodilation<sup>8,22</sup> as well as greater trans-cerebral RSNO release as observed herein (Figure 1(i)). Moreover, a lower [Hb] may be related to an improvement in NO-mediated signal transduction due to reduced NO scavenging by hemoglobin.<sup>39-41</sup> However, we contend that it is unlikely that differences in blood viscosity associated with [Hb] underscore the differences in cerebral hypoxic vasodilation we observed (as reviewed in<sup>42</sup>).<sup>43-46</sup>

It is important to note that the relationship between Hb concentration and cerebral hypoxic vasodilation was only observed in males (Figure 3(f)). As investigations 1 and 2 were only conducted in males we are unable to discern if this is due to differences in the NO-dependence of cerebral hypoxic vasodilation between males or females or differing impacts of Hb levels on trans-cerebral RSNO release. Moreover, as menstrual phase was not standardized (or recorded) for investigation 3, it is unknown if the lack of relationship between cerebral hypoxic vasodilation is due to variability in female sex hormones (with potential impacts on NO signaling<sup>47-49</sup>). Nonetheless, this provides a more representative cross-section of female sex hormone profiles and thus a more generalizable sample of females than if inclusion was restricted to one menstrual phase (e.g. low circulating hormone phase as is common). Despite the lack of control over the menstrual phase, we observed a ~20% greater cerebral hypoxic vasodilation in females when compared with males. As  $\text{CaO}_2$  will be lower for a given  $\text{SaO}_2$  in the females compared to males (due to lower [Hb]), the greater cerebral hypoxic vasodilation in females may be related to potentiated RSNO-mediated vasodilation.<sup>8,22</sup>

Given the low rate for which pre-clinical studies translate to the development of efficacious clinical therapies (<5%),<sup>50,51</sup> demonstrating that an integral physiologic function is modifiable in humans, in this case by NO, is a key step in translation. Multiple cerebral hypoxic vasodilation signaling pathways have been elucidated in *ex vivo* and pre-clinical experiments (e.g. adenosine, prostaglandins) but when these studies are replicated (as much as one can) in humans, no effect is observed. If the manipulation of a signaling pathway is unable to modify an associated physiologic function in the context of human biology, then a treatment effect in clinical patients is unlikely. Our data provides



a bridge between pre-clinical and clinical studies, whereby, in humans we demonstrate that cerebral hypoxic vasodilation is modifiable through changes in NO signaling. This sets a precedent for exploring NO-based therapies in disease populations where resolution of impairments in cerebral perfusion, acute or chronic, is desired (e.g. focal ischemic stroke or global hypoxic-ischemic brain injury).

## Conclusion

We determined that the magnitude of cerebral hypoxic vasodilation in humans is linked to trans-cerebral release of *S*-nitrosothiols. This implicates the erythrocyte as an integral regulator of cerebral blood flow. We further determined this vasodilation to be nitric oxide-dependent, observing a reduction in cerebral hypoxic vasodilation following nitric oxide synthase inhibition. Finally, we demonstrate during both acute experimental anemia, and when comparing across a cohort, that a lower hemoglobin concentration is related to increased cerebral hypoxic vasodilation. Collectively, these results indicate that hemoglobin and nitric oxide hold key roles in the regulation of cerebral hypoxic vasodilation in humans. That changes in nitric oxide-dependent signaling elicit changes in cerebral hypoxic vasodilation in humans indicates the potential feasibility of clinically modifying cerebral perfusion by manipulation of these pathways and thereby provides a promising therapeutic target for the treatment of brain diseases associated with acute or chronic impairments in cerebral perfusion.

## Funding

The author(s) disclosed receipt of the following financial support for the research, authorship, and/or publication of this article: This work was supported by a Heart and Stroke Foundation of Canada Grant in Aid (G-18-0022304) and Canada Research Chair in Cerebrovascular Physiology (PNA).

## Data availability statement

The data that support the findings of this study are available from the corresponding author upon reasonable request.

## Acknowledgements

We would like to thank our research participants for volunteering their time and energy to this study.





## Declaration of conflicting interests

The author(s) declared no potential conflicts of interest with respect to the research, authorship, and/or publication of this article.

## Authors' contributions

Study Conception: RLH, DBM, DMB, PNA; Data collection: RLH, DBM, BSS, HGC, CAH, DN-F, JMJRC, MMT, GBC, AP, JCT, MvM, CG, MS, MSS, DMB, PNA; Data analysis: RLH, DBM, BSS, MvM; Data interpretation: RLH, DBM, DMB, PNA; Drafted the manuscript: RLH; Revised the manuscript for critical intellectual content: RLH, DBM, BSS, HGC, CAH, DN-F, JMJRC, MMT, GBC, AP, JCT, MvM, CG, MS, MSS, DMB, PNA; Approved the final version: RLH, DBM, BSS, HGC, CAH, DN-F, JMJRC, MMT, GBC, AP, JCT, MvM, CG, MS, MSS, DMB, PNA.

## ORCID iDs

Ryan L Hoiland  <https://orcid.org/0000-0002-5657-0059>  
 Hannah G Caldwell  <https://orcid.org/0000-0001-6072-7277>  
 Alexander Patrician  <https://orcid.org/0000-0002-2634-6195>  
 Joshua C Tremblay  <https://orcid.org/0000-0002-1667-294X>

## Supplemental material

Supplemental material for this article is available online.

## References

- Zhang R, Hess DT, Qian Z, et al. Hemoglobin  $\beta$ Cys93 is essential for cardiovascular function and integrated response to hypoxia. *Proc Natl Acad Sci U S A* 2015; 112: 6425–6430.
- Rossen R, Kabat H and Anderson JP. Acute arrest of cerebral circulation in man. *Arch Neuropsych* 1943; 50: 510–528.
- Wolters FJ, Zonneveld HI, Hofman A, et al. Cerebral perfusion and the risk of dementia: a population-based study. *Circulation* 2017; 136: 719–728.
- Pelligrino DA, Wang Q, Koenig HM, et al. Role of nitric oxide, adenosine, N-methyl-D-aspartate receptors, and neuronal activation in hypoxia-induced pial arteriolar dilation in rats. *Brain Res* 1995; 704: 61–70.
- Takuwa H, Matsuura T, Bakalova R, et al. Contribution of nitric oxide to cerebral blood flow regulation under hypoxia in rats. *J Physiol Sci* 2010; 60: 399–406.
- Premont RT, Singel DJ and Stamler JS. The enzymatic function of the honorary enzyme: S-nitrosylation of hemoglobin in physiology and medicine. *Molecular Aspects of Medicine* 2022; 84: 101056.
- Premont RT, Reynolds JD, Zhang R, et al. Role of nitric oxide carried by hemoglobin in cardiovascular physiology: developments on a three-gas respiratory cycle. *Circ Res* 2020; 126: 129–158.
- Stamler JS, Jia L, Eu JP, et al. Blood flow regulation by S-nitrosohemoglobin in the physiological oxygen gradient. *Science* 1997; 276: 2034–2037.
- Jia L, Bonaventura C, Bonaventura J, et al. S-nitrosohemoglobin: a dynamic activity of blood involved in vascular control. *Nature* 1996; 380: 221–226.



10. Gladwin MT, Raat NJH, Shiva S, et al. Nitrite as a vascular endocrine nitric oxide reservoir that contributes to hypoxic signaling, cytoprotection, and vasodilation. *Am J Physiol Heart Circ Physiol* 2006; 291: H2026–H2035.
11. Bailey DM, Rasmussen P, Overgaard M, et al. Nitrite and S-nitrosohemoglobin exchange across the human cerebral and femoral circulation: relationship to basal and exercise blood flow responses to hypoxia. *Circulation* 2017; 135: 166–176.
12. Ide K, Worthley M, Anderson T, et al. Effects of the nitric oxide synthase inhibitor L-NMMA on cerebrovascular and cardiovascular responses to hypoxia and hypercapnia in humans. *J Physiol* 2007; 584: 321–332.
13. van Mil AHM, Spilt A, van Buchem MA, et al. Nitric oxide mediates hypoxia-induced cerebral vasodilation in humans. *J Appl Physiol (1985)* 2002; 92: 962–966.
14. Tymko MM, Stembridge M, Patrician A, et al. The 2018 global research expedition on altitude related chronic health (global REACH) to cerro de Pasco, Peru: an experimental overview. *Exp Physiol* 2021; 106: 86–103.
15. Hoiland RL, Tremblay JC, Stacey BS, et al. Acute reductions in hematocrit increase flow-mediated dilation independent of resting nitric oxide bioavailability in humans. *J Physiol* 2020; 598: 4225–4236.
16. Hoiland RL, Caldwell HG, Howe CA, et al. Nitric oxide is fundamental to neurovascular coupling in humans. *J Physiol* 2020; 598: 4927–4939.
17. Fisher JA, Iscoe S and Duffin J. Sequential gas delivery provides precise control of alveolar gas exchange. *Respir Physiol Neurobiol* 2016; 225: 60–69.
18. Ainslie PN, Shaw AD, Smith KJ, et al. Stability of cerebral metabolism and substrate availability in humans during hypoxia and hyperoxia. *Clin Sci (Lond)* 2014; 126: 661–670.
19. Bakdash JZ and Marusich LR. Repeated measures correlation. *Front Psychol* 2017; 8: 456.
20. Villafuerte FC and Corante N. Chronic mountain sickness: clinical aspects, etiology, management, and treatment. *High Alt Med Biol* 2016; 17: 61–69.
21. Todd MM, Farrell S and Wu B. Cerebral blood flow during hypoxemia and hemodilution in rabbits: different roles for nitric oxide? *J Cereb Blood Flow Metab* 1997; 17: 1319–1325.
22. McMahon TJ, Moon RE, Lusching BP, et al. Nitric oxide in the human respiratory cycle. *Nat Med* 2002; 8: 711–717.
23. Stamler JS, Singel DJ and Piantadosi CA. SNO-hemoglobin and hypoxic vasodilation. *Nat Med* 2008; 14: 1008–1009.
24. Cosby K, Partovi KS, Crawford JH, et al. Nitrite reduction to nitric oxide by deoxyhemoglobin vasodilates the human circulation. *Nat Med* 2003; 9: 1498–1505.
25. Tejero J, Shiva S and Gladwin MT. Sources of vascular nitric oxide and reactive oxygen species and their regulation. *Physiol Rev* 2019; 99: 311–379.
26. Ellsworth ML, Ellis CG, Goldman D, et al. Erythrocytes: oxygen sensors and modulators of vascular tone. *Physiology (Bethesda)* 2009; 24: 107–116.
27. Sun C-W, Yang J, Kleschyov A, et al. Hemoglobin  $\beta$ 93 cysteine is not required for export of nitric oxide bioactivity from the red blood cell. *Circulation* 2019; 139: 2654–2663.
28. Zhang R, Hess DT, Reynolds JD, et al. Brief report: hemoglobin S-nitrosylation plays an essential role in cardioprotection. *J Clin Invest* 2016; 126: 1–6.
29. Reynolds JD, Premont RT and Stamler JS. Letter by Reynolds et al regarding article, “Hemoglobin  $\beta$ 93 cysteine is not required for export of nitric oxide bioactivity from the red blood cell”. *Circulation* 2019; 140: e758–e759.
30. Isbell TS, Sun CW, Wu LC, et al. SNO-hemoglobin is not essential for red blood cell-dependent hypoxic vasodilation. *Nat Med* 2008; 14: 773–777.
31. Hoiland RL, Bain AR, Tymko MM, et al. Adenosine receptor dependent signaling is not obligatory for normobaric and hypobaric hypoxia-induced cerebral vasodilation in humans. *J Appl Physiol (1985)* 2017; 122: 795–808.
32. Kellawan JM, Peltonen GL, Harrell JW, et al. Differential contribution of cyclooxygenase to basal cerebral blood flow and hypoxic cerebral vasodilation. 2020. 468–479.
33. Peltonen GL, Harrell JW, Rousseau CL, et al. Cerebrovascular regulation in men and women: stimulus-specific role of cyclooxygenase. *Physiol Rep* 2015; 3: e12451.
34. Hoiland RL, Ainslie PN, Wildfong KW, et al. Indomethacin-induced impairment of regional cerebrovascular reactivity: implications for respiratory control. *J Physiol* 2015; 593: 1291–1306.
35. Harrell JW, Peltonen GL and Schrage WG. Reactive oxygen species and cyclooxygenase products explain the majority of hypoxic cerebral vasodilation in healthy humans. *Acta Physiol (Oxf)* 2019; 226: e13288.
36. Hansen AB, Hoiland RL, Lewis NCS, et al. UBC-Nepal expedition: the use of oral antioxidants does not alter cerebrovascular function at sea level or high altitude. *Exp Physiol* 2018; 103: 523–534.
37. Rocha MP, Campos MO, Mattos JD, et al. KATP channels modulate cerebral blood flow and oxygen delivery during isocapnic hypoxia in humans. *J Physiol* 2020; 598: 3343–3356.
38. Smith KJ, Neill M and Hoiland RL. Scratching the surface of hypoxic cerebral vascular control: a potentially polarizing view of mechanistic research in humans. *J Physiol* 2020; 598: 3313–3315.
39. Azarov I, Huang KT, Basu S, et al. Nitric oxide scavenging by red blood cells as a function of hematocrit and oxygenation. *J Biol Chem* 2005; 280: 39024–39032.
40. Tremblay JC, Hoiland RL, Howe CA, et al. Global REACH 2018: high blood viscosity and hemoglobin concentration contribute to reduced flow-mediated dilation in high-altitude excessive erythrocytosis. *Hypertension* 2019; 73: 1327–1335.
41. Hoiland RL, Tremblay JC, Stacey BS, et al. Acute reductions in hematocrit increase flow-mediated dilation

- independent of resting nitric oxide bioavailability in humans. *J Physiol* 2020; 598: 4225–4236.
42. Hoiland RL, Bain AR, Rieger MG, et al. Hypoxemia, oxygen content, and the regulation of cerebral blood flow. *Am J Physiol Regul Integr Comp Physiol* 2016; 310: R398–R413.
  43. Brown MM and Marshall J. Regulation of cerebral blood flow in response to changes in blood viscosity. *The Lancet* 1985; 1: 604–609.
  44. Brown MM and Marshall J. Effect of plasma exchange on blood viscosity and cerebral blood flow. *Br Med J (Clin Res Ed)* 1982; 284: 1733–1736.
  45. Brown M, Wade J and Marshall J. Fundamental importance of arterial oxygen content in the regulation of cerebral blood flow in man. *Brain* 1985; 108: 81–93.
  46. Waschke KF, Krieter H, Hagen G, et al. Lack of dependence of cerebral blood flow on blood viscosity after blood exchange with a Newtonian O<sub>2</sub> carrier. *J Cereb Blood Flow Metab* 1994; 14: 871–876.
  47. Pelligrino DA, Ye S, Tan F, et al. Nitric-oxide-dependent pial arteriolar dilation in the female rat: Effects of chronic estrogen depletion and repletion. *Biochem Biophys Res Commun* 2000; 269: 165–171.
  48. Momoi H, Ikomi F and Ohhashi T. Estrogen-induced augmentation of endothelium-dependent nitric oxide-mediated vasodilation in isolated rat cerebral small arteries. *Jpn J Physiol* 2003; 53: 193–203.
  49. Peltonen GL, Harrell JW, Aleckson BP, et al. Cerebral blood flow regulation in women across menstrual phase: differential contribution of cyclooxygenase to basal, hypoxic, and hypercapnic vascular tone. *Am J Physiol Regul Integr Comp Physiol* 2016; 311: R222–R231.
  50. Collins FS. Reengineering translational science: the time is right. *Sci Transl Med* 2011; 3: 90cm17.
  51. Paul SM, Mytelka DS, Dunwiddie CT, et al. How to improve R&D productivity: the pharmaceutical industry's grand challenge. *Nat Rev Drug Discov* 2010; 9: 203–214.