

## **Brachyury regulates proliferation of cancer cells via a p27Kip1-dependent pathway**

McFarlane, R.J.; Gollins, S.W.; Wakeman, J.; Jezkova, J.; Williams, J.S.; Jones-Hutchins, F.; Sammut, S.J.; Gollins, S.; Cree, I.; Coupland, S.; McFarlane, R.J.; Wakeman, J.A.

### **Oncotarget**

DOI:

[10.18632/oncotarget.1999](https://doi.org/10.18632/oncotarget.1999)

Published: 21/05/2014

[Cyswllt i'r cyhoeddiad / Link to publication](#)

*Dyfyniad o'r fersiwn a gyhoeddwyd / Citation for published version (APA):*

McFarlane, R. J., Gollins, S. W., Wakeman, J., Jezkova, J., Williams, J. S., Jones-Hutchins, F., Sammut, S. J., Gollins, S., Cree, I., Coupland, S., McFarlane, R. J., & Wakeman, J. A. (2014). Brachyury regulates proliferation of cancer cells via a p27Kip1-dependent pathway. *Oncotarget*, 5(11), 3813-3822. <https://doi.org/10.18632/oncotarget.1999>

### **Hawliau Cyffredinol / General rights**

Copyright and moral rights for the publications made accessible in the public portal are retained by the authors and/or other copyright owners and it is a condition of accessing publications that users recognise and abide by the legal requirements associated with these rights.

- Users may download and print one copy of any publication from the public portal for the purpose of private study or research.
- You may not further distribute the material or use it for any profit-making activity or commercial gain
- You may freely distribute the URL identifying the publication in the public portal ?

### **Take down policy**

If you believe that this document breaches copyright please contact us providing details, and we will remove access to the work immediately and investigate your claim.

# Brachyury regulates proliferation of cancer cells via a p27<sup>Kip1</sup>-dependent pathway

Jana Jezkova<sup>1</sup>, Jason S. Williams<sup>1</sup>, Ffion Jones-Hutchins<sup>1</sup>, Stephen J. Sammut<sup>2</sup>, Simon Gollins<sup>3</sup>, Ian Cree<sup>4</sup>, Sarah Coupland<sup>5</sup>, Ramsay J. McFarlane<sup>1,6</sup> and Jane A. Wakeman<sup>1</sup>

<sup>1</sup> North West Cancer Research Institute, College of Natural Sciences, Bangor, Gwynedd, UK

<sup>2</sup> School of Medical Sciences, Bangor, Gwynedd, UK

<sup>3</sup> North Wales Cancer Treatment Centre, Betsi Cadwaladr University Health Board, Bodelwyddan, UK

<sup>4</sup> Warwick Medical School, University Hospitals Coventry and Warwickshire, Walsgrave, Coventry, UK

<sup>5</sup> Pathology, Dept. of Molecular and Clinical Cancer Medicine, University of Liverpool, UK

<sup>6</sup> NISCHR Cancer Genetics Biomedical Research Unit, Welsh Government, Cathays Park, Cardiff, UK

**Correspondence to:** Ramsay J. McFarlane, **email:** r.mcfarlane@bangor.ac.uk

Jane A. Wakeman, **email:** j.a.wakeman@bangor.ac.uk

**Keywords:** Brachyury, proliferation, colorectal cancer, p27<sup>Kip1</sup>

**Received:** May 15, 2014

**Accepted:** May 19, 2014

**Published:** May 21, 2014

This is an open-access article distributed under the terms of the Creative Commons Attribution License, which permits unrestricted use, distribution, and reproduction in any medium, provided the original author and source are credited.

## ABSTRACT

**The T-box transcription factor Brachyury is expressed in a number of tumour types and has been demonstrated to have cancer inducing properties. To date, it has been linked to cancer associated induction of epithelial to mesenchymal transition, tumour metastasis and expression of markers for cancer stem-like cells. Taken together, these findings indicate that Brachyury plays an important role in the progression of cancer, although the mechanism through which it functions is poorly understood. Here we show that Brachyury regulates the potential of Brachyury-positive colorectal cancer cells to proliferate and reduced levels of Brachyury result in inhibition of proliferation, with features consistent with the cells entering a quiescent-like state. This inhibition of proliferation is dependent upon p27<sup>Kip1</sup> demonstrating that Brachyury acts to modulate cellular proliferative fate in colorectal cancer cells in a p27<sup>Kip1</sup>-dependent manner. Analysis of patient derived colorectal tumours reveals a heterogeneous localisation of Brachyury (in the nucleolus, nucleus and cytoplasm) indicating the potential complexity of the regulatory role of Brachyury in solid colorectal tumours.**

## INTRODUCTION

Brachyury (T) is a developmentally regulated T-box transcription factor involved in controlling cell movements and differentiation [1–3]. Brachyury expression has been detected in various cancers including chordoma [4], lung and colon carcinomas [5], where Brachyury protein in the cytoplasm has been linked to high tumour grade and poor prognosis [4, 5]. The role of Brachyury in tumour development is not well understood but it has been shown to induce epithelial to mesenchymal transition (EMT) [6], impose a survival advantage to lung cancer cells [7] and

is also linked to the acquisition of properties of cancer stem-like cells (CSCs) [8]. A recent study in chordoma cell lines demonstrated that Brachyury-depletion resulted in G1 growth arrest, through an unknown mechanism, and it was postulated that Brachyury might be a master regulator controlling an oncogenic transcriptional network [9, 10]. Decreased Brachyury has also been shown to lead to decreased cell proliferation, migration and invasion in mice [11].

p27<sup>Kip1</sup> (encoded by the *CDKN1B* gene) is a member of the Cip/Kip family of cyclin-dependent kinase inhibitors (CKI) which have well-described nuclear-

associated tumour suppressor functions in causing G1 cell-cycle phase arrest [12–14]. Evidence also shows a role for p27<sup>Kip1</sup> in maintaining genomic integrity in the gastrointestinal tissue of mice through control of the transition of G2/M in response to DNA damage by genotoxic agents [15]. Consistent with this, p27<sup>Kip1</sup> is an inhibitor of gastrointestinal tumourigenesis in mice [16] and the tumour suppressor functions associated with p27<sup>Kip1</sup> may be mediated by inhibition of cell-cycle progression beyond G1 and maintenance of genomic stability in G2/M. In accordance with a function in tumour suppression, loss of p27<sup>Kip1</sup> in tumour cells is associated with a higher tumour grade and poor prognosis [17–21].

p27<sup>Kip1</sup> also acts as a multi-functional regulator, and has cyclin-CDK inhibitor-independent functions (linked to its localisation), being involved in alteration of actin dynamics and migration [22–24] and in the control of cell differentiation, acting as a key cell-cycle to differentiation determinant [25–27]. p27<sup>Kip1</sup> has been shown to be regulated by cMYC at the level of both protein and mRNA [25, 28–31]. cMYC is a major oncogenic driver and has diverse roles in regulation of cell proliferation, growth, apoptosis, metabolism and differentiation [32].

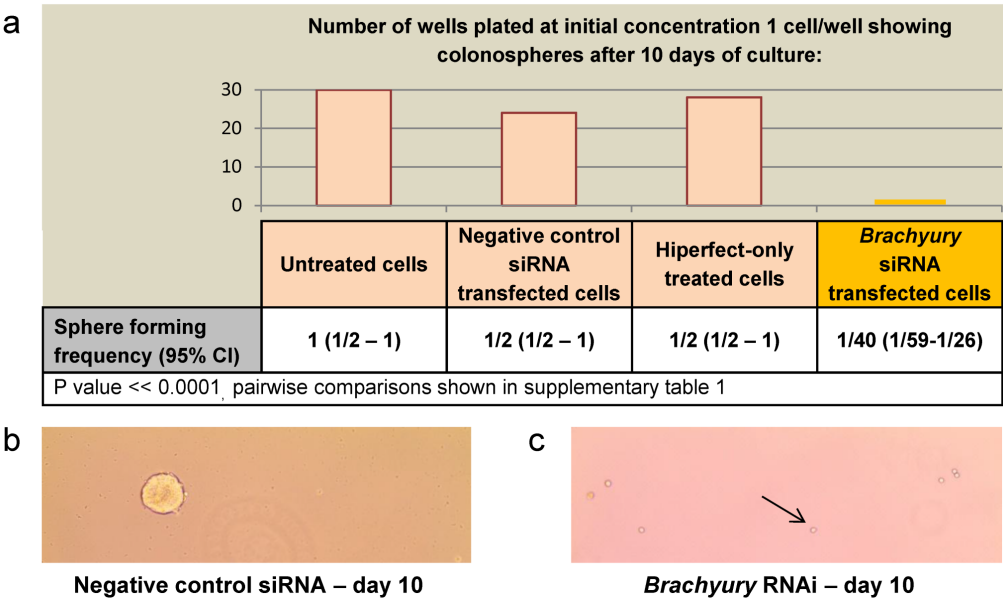
Here, we show that reduction in the levels of Brachyury in colorectal cancer (CRC) cells perturbs proliferation through a mechanism which involves p27<sup>Kip1</sup> and induces a quiescent-like state from which the cells can

recover when grown under suitable growth conditions. Our results place cMYC downstream of Brachyury and suggest that Brachyury modulates the proliferative fate of cells. In studies of patient-derived CRC material a complex relationship between Brachyury and p27<sup>Kip1</sup> is revealed, based on heterogeneous localisation patterns of Brachyury within the carcinoma. Brachyury is localised to a region of the nucleus, consistent with the nucleolus, and/or the cytoplasm of some, but not all the cells in the carcinoma, suggesting region specific functions within the tumour.

## RESULTS

### Brachyury maintains proliferation of CRC cells

We were interested to determine whether Brachyury affects proliferation of CRC cells. We used the Brachyury positive CRC cell line, SW480, to derive colonospheres (potentially enriched for cancer progenitor cells), and carried out an extreme limiting dilution assay (ELDA) [34] to determine the ability of single CRC cells to proliferate and form spheres in the presence of Brachyury or under conditions of siRNA-induced Brachyury-depletion. Single Brachyury-depleted CRC cells were 20-fold reduced in



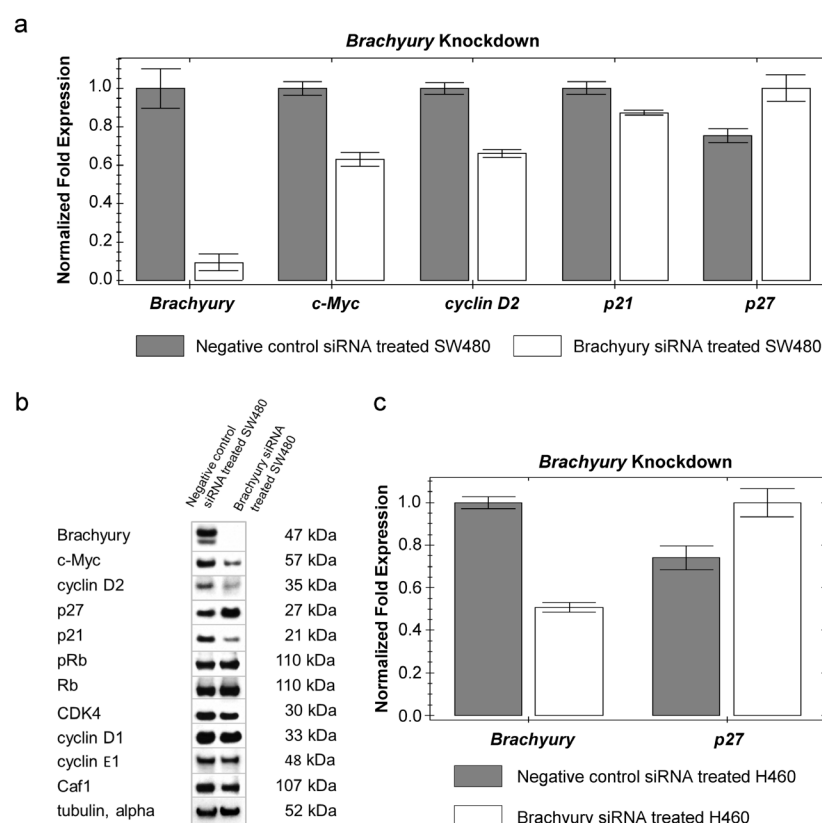
**Figure 1: The effect of Brachyury on colorectal cancer cell proliferation as determined by Extreme limiting dilution analysis (ELDA) a) ELDA of colonosphere forming frequency of SW480 CRC cells.** Colonospheres derived from 1, 10, 100 or 1000 CRC cells (per well) were transfected with negative control, Hs\_T\_8 or Hs\_T\_5 *Brachyury* siRNA or hiperfect only, to determine the effect on frequency of sphere formation. Column bars on the graph represent the sphere forming frequencies shown in the table beneath. Brachyury-knockdown levels were routinely around 80% knockdown as assessed by qRT-PCR. CI = confidence interval. Single Brachyury-depleted cells were 20-fold reduced in their sphere forming ability compared to controls. The frequency of sphere forming cells was determined using the ELDA web tool at <http://bioinf.wehi.edu.ac/software/elda>. The number of wells used and data for each dilution of cells is shown in figure S1. b) Example of spheres formed from single SW480 colorectal cancer cells after 10 days with non-interfering siRNA (control conditions) c) Example of single SW480 colorectal cancer cells that remain in culture after 10 days treatment with siRNA to *Brachyury* (Hs\_T\_8 or Hs\_T\_5), the black arrow points to a single cell (x10 magnification).

their ability to form colonospheres and to proliferate, compared to controls (Figure 1a, S1). In the presence of Brachyury (controls) spheres are formed from single CRC cells (Figure 1b). However, when Brachyury levels are reduced, the single cells that are plated for the proliferation assay remain morphologically unchanged for the duration of the experiment (Figure 1c). The reduced number of spheres formed following *Brachyury*-knockdown is neither due to apoptosis or senescence (S2). In accordance with these observations, the inhibition of proliferation following reduction of Brachyury was reversible, and when *Brachyury*-knockdown single cells were transferred to fresh media they recovered and formed spheres at a frequency of around 30-40%, suggesting that reduced levels of Brachyury result in a recoverable, quiescent-like state in the CRC cells.

### ***Brachyury* regulates cell-cycle modulators cMYC and p27<sup>Kip1</sup>**

We determined whether changes in components of cell-cycle regulatory pathways might be responsible for

the cell proliferation-inhibition phenotype we observed following *Brachyury*-knockdown. *Brachyury*-knockdown in CRC cells (grown as spheres) had a profound negative effect on their ability to proliferate (Figure 1a,c); therefore we additionally carried out these studies on cells grown as adherent monolayers which could be grown more easily in larger amounts to obtain sufficient biomaterial to study regulatory mechanisms. Cells grown as spheres or monolayers expressed similar levels of *Brachyury*, indicating that results for CRC cells grown as spheres or monolayers should be comparable (S3a). We observed a consistent down-regulation of cMYC (mRNA and protein) following *Brachyury*-knockdown and a corresponding decrease in levels of *cyclin D2* (*CCND2*), a known target of cMYC [37] (Figure 2a,b). Cyclin D2 complexes with CDK4 to control cell division by hyper-phosphorylating retinoblastoma (Rb) leading to its inactivation [38]. However, we see no change in the levels of either phospho-Rb or unphosphorylated-Rb making it unlikely that the growth inhibitory effects observed in these cells occurs through inactivation of Rb (Figure 2b). Following activation of cMYC, cyclin D2 (in a complex with CDK4)



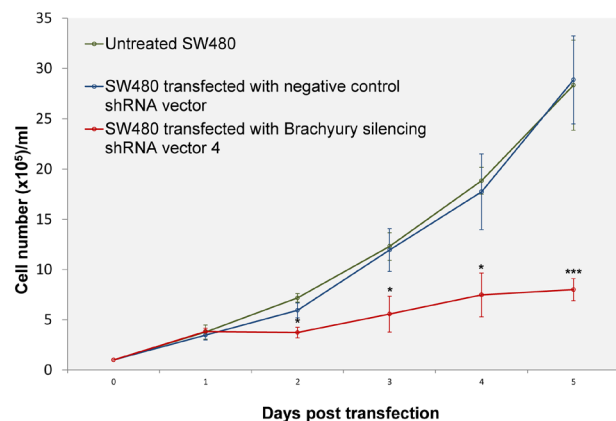
**Figure 2: Reduced levels of Brachyury result in increased levels of p27<sup>Kip1</sup>** a) qRT-PCR analysis showing change in expression levels of the panel of genes in response to siRNA knockdown of *Brachyury* in SW480 cells b) Western blot analysis showing changes in levels of proteins in response to siRNA knockdown of *Brachyury* in SW480 cells (Western blot images have been cropped for size and are representative of three repeats). Densitometry measurements for p27<sup>Kip1</sup> are shown in S3b and reveal a two-fold increase. c) qRT-PCR analysis of p27<sup>Kip1</sup> expression levels in response to siRNA knockdown of *Brachyury* in H460 cells. Results of qRT-PCR analysis were normalised to a combination of three endogenous reference genes (*GAPDH*,  $\beta$ -actin and *lamin A/C*) and the relative fold change in expression was computed by the  $\Delta\Delta C_t$  method. Error bars show standard error of the mean.

has been shown to sequester p27<sup>Kip1</sup>, thereby limiting its cell-cycle inhibitory activity [37]. On depleting Brachyury we observed an increase in the levels of p27<sup>Kip1</sup> protein (Figure 2b and S3b) consistent with the decreased levels of cyclin D2 relieving the repression of p27<sup>Kip1</sup>, but also observed an increase in the level of expression of the *CDKN1B* gene suggesting that Brachyury might regulate the levels of p27<sup>Kip1</sup> at a transcriptional level, independently of sequestration by cyclin D2 (Figure 2a). *Brachyury*-knockdown in the lung carcinoma cell line, H460, showed a similar effect of increasing the levels and expression of p27<sup>Kip1</sup> (Figure 2c), indicating that the negative regulation of p27<sup>Kip1</sup> by Brachyury may be a universal mechanism in different *Brachyury*-expressing tumour cell types.

Analysis of SW480 cells transfected with *Brachyury* shRNA expressing vectors revealed elongated mean cell doubling times (Figure 3, S4). The elongated cell-cycle of transfected cells (GFP-gated) was concomitant with increased lengths of S and G2 phases (1.8 times times longer in S phase and 3.4 times longer in G2 compared to controls) (S4).

### Inhibition of proliferation is dependent upon p27<sup>Kip1</sup>

Given the increase in expression levels of p27<sup>Kip1</sup> following *Brachyury*-knockdown, and the reported ability of p27<sup>Kip1</sup> to regulate self-renewal of human (h)ES cells [39], we carried out the cell proliferation assay on



**Figure 3: Growth curves of SW480 cells transfected with negative control shRNA vector or *Brachyury* silencing shRNA vector (four different shRNA expressing vectors with GFP-selection), compared with untreated SW480 cells.** Cells transfected with *Brachyury* shRNA expressing vectors revealed elongated cell doubling times (from  $24.83 \pm 1.2$  hours in control cells to  $40.24 \pm 2.65$  hours in Brachyury depleted cells, mean  $\pm$  SD,  $n=3$ ,  $P=0.001$ ) (see also S4). Error bars denote standard deviation ( $n=3$ ). The differences between the negative control and *Brachyury*-knockdown were significant at P values \* $P < 0.05$  and \*\*\* $P < 0.001$ .

CRC cells (grown from single cells) under conditions of *Brachyury* and p27<sup>Kip1</sup> double knockdown, to determine whether simultaneous p27<sup>Kip1</sup> reduction could rescue the inhibition of proliferation observed in single *Brachyury*-knockdown cells. Under these conditions, single CRC cells formed spheres close to frequencies of non-interfering control cells (Figure 4a, S5), suggesting that inhibition of p27<sup>Kip1</sup> may be the predominant pathway through which Brachyury controls CRC cell proliferation. Rescue by p27<sup>Kip1</sup>-reduction could be achieved either by simultaneous knockdown alongside *Brachyury*-knockdown, or following a prior induction of Brachyury proliferation arrest, to induce the quiescent-like state (using siRNA-*Brachyury*), followed by subsequent knockdown of p27<sup>Kip1</sup> at two different time points (Figure 4b-h and S5); both result in proliferative rescue.

Decreased levels of cMYC were observed following *Brachyury*-knockdown and so we determined whether similar effects of cell proliferation arrest and induction of a quiescent-like state were imposed following reduction of cMYC or in combination with p27<sup>Kip1</sup>. As before, we carried out a cell proliferation assay on CRC cells, firstly, under conditions of cMYC-knockdown. We observed a reduction in the sphere-forming frequency of CRC cells (around a 15 fold reduction in spheres compared to controls spheres) (Figure 5). We then performed cMYC/p27<sup>Kip1</sup> double knockdown to determine whether p27<sup>Kip1</sup> could rescue the inhibition of proliferation observed in single cMYC-knockdown cells. Whilst simultaneous cMYC/p27<sup>Kip1</sup> double knockdown rescues cell proliferation, prior treatment of the cells with cMYC-siRNA followed by treatment with p27<sup>Kip1</sup>-siRNA could not rescue the negative proliferation effect (Figure 5, S6). In contrast to the results with Brachyury, the cells did not appear to be in a state of quiescence and could not be recovered, suggesting that Brachyury modulates cell proliferation, possibly in a distinct manner from cMYC.

### *Brachyury* affects expression of cell-cycle regulatory genes

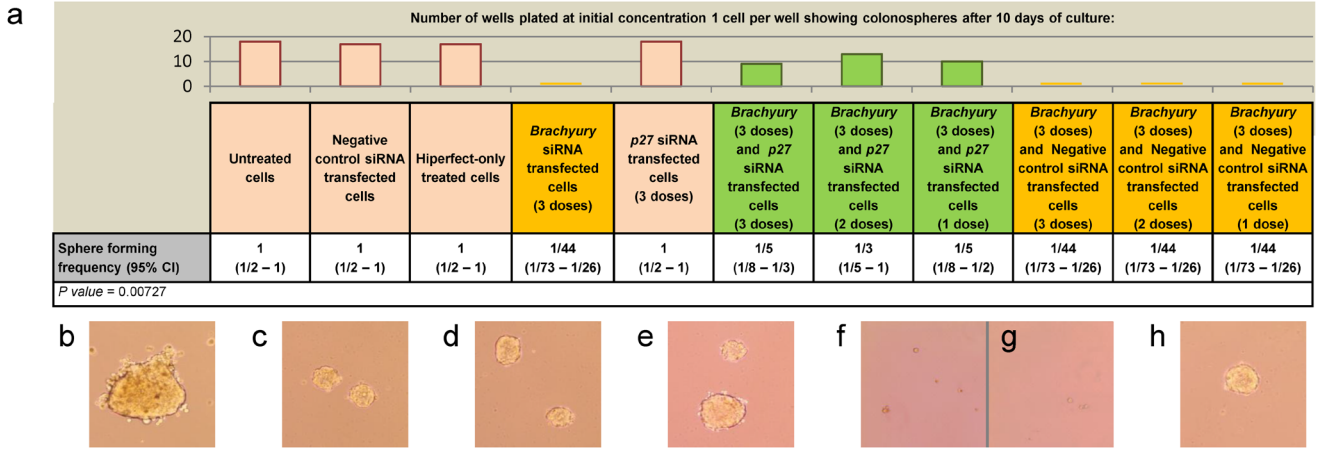
We wanted to further understand the molecular detail of cells with reduced Brachyury and so carried out RNA-seq analysis on control CRC cells versus siRNA *Brachyury*-knockdown cells. There is a pre-dominant down-regulation of genes in *Brachyury*-knockdown cells as revealed by a heat map of the most significantly changed genes organized in hierarchical clusters of gene expression patterns (S7). Some of the most significantly down-regulated genes include those required for progression through the cell-cycle such as *CDC27*, *CCND2*, *CCNE1*. Confirming our qRT-PCR data, the *CDKN1B* (p27<sup>Kip1</sup>) gene was up-regulated. Interestingly, a cohort of genes associated with transcription were also down-regulated, such as *TNFRSF12A*, *POLR3B*,



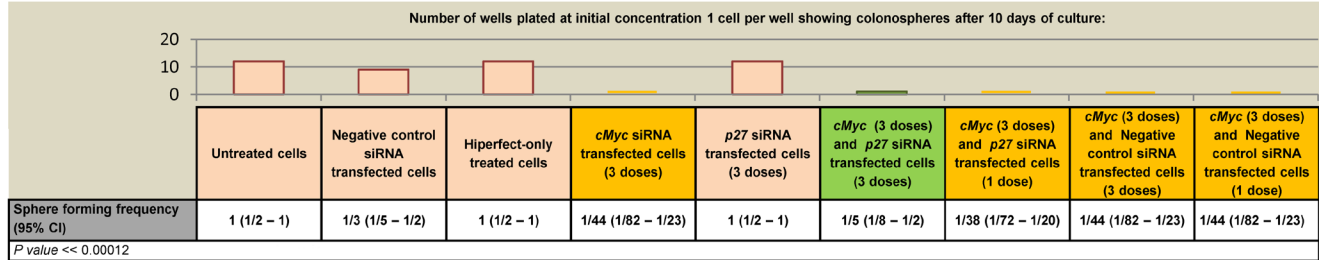
*POLR2L*, and might reflect the quiescent-like state imposed following *Brachyury*-knockdown which has been associated with decreased RNA levels [40]. Significant changes were observed for gene ontology (GO) clusters (S7: Table 1): these also suggest changes in pathways associated with cell-cycle progression, such as S phase regulators, DNA strand elongation modulators involved in DNA replication, and rRNA processing. Disruption of any of these processes could interfere with the normal cell division cycle and growth, and the reduced levels of RNA may be associated with the induction of quiescence. Associated with this, reduction in RNA levels might also reflect disrupted nucleolar function in *Brachyury*-knockdown cells [41].

**Complex distribution of *Brachyury* in colorectal carcinomas**

Our data support the notion that *Brachyury* modulates the levels of *p27<sup>Kip1</sup>* in CRC cells and that this might be important for regulating the proliferative or quiescent potential of cancer cells. Furthermore, GO analysis might infer a role for *Brachyury* consistent with RNA processing and cell-cycle control. We therefore wanted to compare distribution patterns of *Brachyury* and *p27<sup>Kip1</sup>* in patient-derived CRC specimens by immunohistochemistry (IHC). Not all cells within the carcinoma give positive staining for *Brachyury*, but some areas displayed distinct nucleolar staining (Figure 6a, b).



**Figure 4: Rescue of *Brachyury* induced cell proliferation arrest by depletion of *p27<sup>Kip1</sup>*** (a) ELDA assay showing colonosphere forming frequency of colorectal cancer cells under different conditions; control, *Brachyury* single knockdown, *p27<sup>Kip1</sup>* single knockdown and *Brachyury*/ *p27<sup>Kip1</sup>* double knockdowns (1, 2 and 3 doses of siRNA). Column bars on the graph represent the sphere forming frequencies shown in the table beneath; *Brachyury*-knockdown cells form spheres at frequencies as low as 1:44 cells. *Brachyury* and *p27<sup>Kip1</sup>* knockdown levels were routinely around 80% as assessed by qRT-PCR. CI = confidence interval. The frequency of sphere forming cells was determined using the ELDA web tool at <http://bioinf.wehi.edu.ac/software/elda>. The number of wells used and data for each dilution of cells in the ELDA assay are shown in Figure S4. Examples of single SW480 cells grown for 10 days to form spheres are shown in a)-h) under the following conditions b) untreated control cells c) control cells treated with non-interfering siRNA d) control cells treated with hiperfect e) cells treated with siRNA to *p27<sup>Kip1</sup>* f) and g) *Brachyury* siRNA treated cells h) *Brachyury* and *p27<sup>Kip1</sup>* siRNA treated cells.



**Figure 5: Effect of *cMyc* and *p27<sup>Kip1</sup>* siRNA knockdown on SW480 colorectal cancer cell proliferation** a) ELDA of colonosphere forming frequency of CRC cells. Colonospheres derived from 1, 10, 100 or 1000 CRC cells/well (SW480) were transfected with negative control non-interfering siRNA, hiperfect only control, *cMyc* siRNA, *p27<sup>Kip1</sup>* siRNA, *cMyc* and *p27<sup>Kip1</sup>* double knockdown siRNA to determine the effect on frequency of sphere formation. Column bars on the graph represent the sphere forming frequencies shown in the table beneath. CI = confidence interval. The frequency of sphere forming cells was determined using the ELDA web tool at <http://bioinf.wehi.edu.ac/software/elda> b) qRT-PCR analysis of gene expression levels under conditions of *cMyc*, *p27<sup>Kip1</sup>* and *cMyc*/ *p27<sup>Kip1</sup>* double knockdown. The number of wells used and data for each dilution of cells is shown in Figure S6.

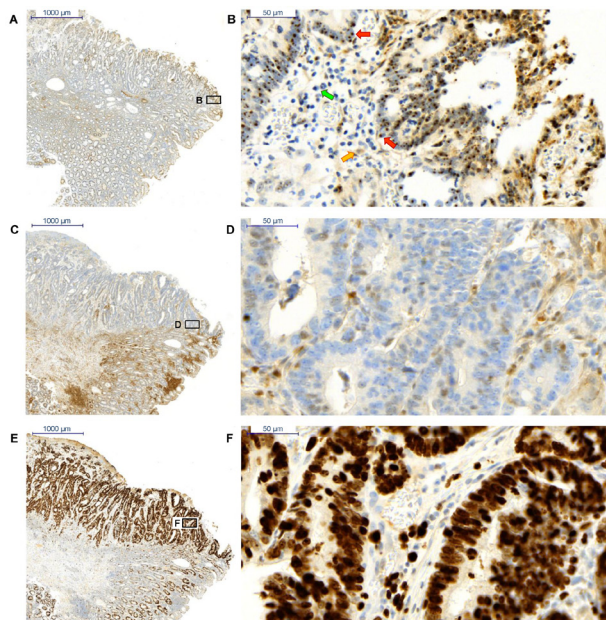
To our knowledge, this is the first report of this staining pattern for Brachyury. We also observed widespread cytoplasmic staining of Brachyury in accordance with observations by Kilic and co-workers [4]. Whilst the carcinoma was also strongly positive for the proliferation marker Ki67, it only displayed p27<sup>Kip1</sup> staining at the tumour margin (Figure 6c-f). In summary, the carcinoma revealed heterogeneity of Brachyury localization, stained positive for Ki67, but p27<sup>Kip1</sup> staining was only observed at the margin. The heterogeneity of Brachyury distribution in the tumour suggests that it may have region specific functions.

## DISCUSSION

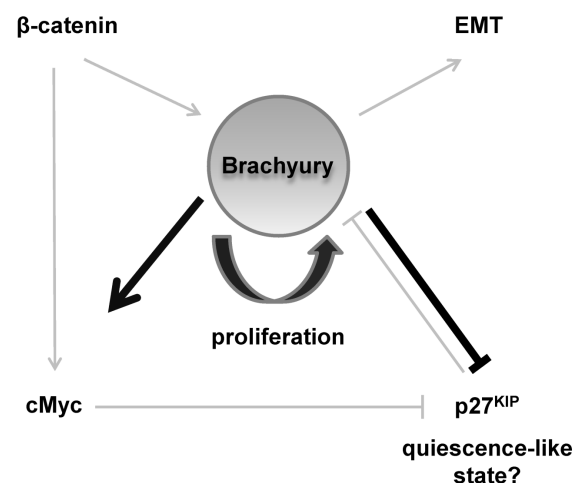
We report that Brachyury modulates cancer cell proliferation through a p27<sup>Kip1</sup>-dependent mechanism. When Brachyury levels are reduced, proliferative arrest ensues and a quiescent-like state is adopted from which cells can reversibly recover under suitable growth

conditions. This suggests that inhibition of p27<sup>KIP</sup> is a major route through which Brachyury functions to allow proliferation, since double knockdown of *Brachyury* and *p27<sup>Kip1</sup>* results in restoration of cell proliferation. The effects of Brachyury on p27<sup>Kip1</sup> might be due to cMYC; whilst *cMYC*-knockdown induces proliferation arrest, there is a difference in the response to Brachyury since cells do not enter a quiescent-like state (as defined by ability to re-enter the cell-cycle). Simultaneous reductions in p27<sup>Kip1</sup> and cMYC rescue the proliferation defect, however, the arrest imposed by reduced cMYC can only be relieved by simultaneous knockdown of p27<sup>Kip1</sup> and not if p27<sup>Kip1</sup> is depleted after prior growth arrest by *cMYC*-knockdown. The difference in responses between *Brachyury*/p27<sup>Kip1</sup> and *cMYC*/p27<sup>Kip1</sup> double knockdowns may be due to dosage of cMYC. Although reduced, levels of *cMYC* remain relatively high following *Brachyury*-knockdown compared to levels of *cMYC* following *cMYC*-knockdown directly. We might speculate that very low levels of *cMYC* (observed in direct *cMYC*-knockdown) exclude the cells from re-entering the cell-cycle, but higher levels observed in the *Brachyury*-knockdown cells are 'just right' to allow cells to enter a quiescent-like state. Evidence in support of this is seen by the fact that one of the main routes by which cMYC drives tumourigenesis is through inhibition of differentiation and it has been shown to antagonize differentiation and growth inhibition effects of p27<sup>Kip1</sup> in leukaemia cells [42].

It is possible that Brachyury acts to regulate both. We speculate that the presence of Brachyury results in high cMYC/low p27<sup>Kip1</sup> allowing proliferation (and avoidance of differentiation), but when Brachyury levels are reduced, this results in low, or optimal levels of, cMYC/high p27<sup>Kip1</sup> inducing a quiescent-like state, and enabling subsequent cell differentiation with appropriate signals. Brachyury might impose a state of 'competence' to cells, allowing decisions to be made between proliferation and



**Figure 6: Immunohistochemistry staining of *Brachyury* and p27<sup>Kip1</sup> in a colorectal carcinoma** a) and b) *Brachyury* is present in the cytoplasm and nucleolar region of the nucleus in a heterogeneous pattern within the carcinoma (x2 and x40 respectively); red arrows point to nucleolar staining, yellow arrow points to cytoplasmic staining and green arrow points to a negative-staining cell c) and d) p27<sup>Kip1</sup> is predominantly negative within the carcinoma except for cells at the margins (x2 and x40 respectively) e) and f) Ki67 staining demonstrates proliferation of cells within the carcinoma (x2 and x40 respectively). Four patient samples were studied and all were Brachyury positive: the results shown are from a single patient and are representative of staining patterns obtained for the four Brachyury positive CRC patients.



**Figure 7: Schematic model describing a central role for Brachyury in regulating proliferation and quiescence.**

quiescence, regulating levels of p27<sup>Kip1</sup> as a key effector (Figure 7). Interestingly, ChIP-seq experiments performed in mouse identified Brachyury binding sites in Myc and CDKN1B (p27<sup>Kip1</sup>) at proximal enhancer elements [43].

Over-expression of p27<sup>Kip1</sup> in hES cells leads to growth arrest and a decrease in *Brachyury*, which may be linked to regulation of EMT [39]. Increased p27<sup>Kip1</sup> is also required to maintain terminal differentiation following exit from the cell-cycle [44]. Our studies show that *Brachyury*-knockdown results in inhibition of proliferation associated with an increased cell doubling time, but do not reveal a specific cell-cycle stage arrest. Studies in chordoma cells, with reduced Brachyury, showed a specific proliferation and G1 phase arrest [10]. The elongation/delayed cell division times that we observed following *Brachyury*-knockdown, and our GO analysis suggests that Brachyury might also be linked to cell growth changes in CRC cells. Interestingly, neither the response to reduced Brachyury in chordomas, nor the response we observe in CRC cells complies with studies carried out recently in lung cell lines where elevated Brachyury was associated with decreased cell proliferation [7]. This may reflect differences inherent to the use of different tumour cell types, or to variation in control of cell-cycle elements by Brachyury in different cell contexts and possibly to different doses, levels or compartmentalization of Brachyury.

High levels of p27<sup>Kip1</sup> are found in quiescent cells and transcripts are rapidly degraded following mitogenic activation in cancer cells [45]. Indeed, levels of p27<sup>Kip1</sup> are shown to be important for regulating entry into quiescence [29] and although levels remain high in quiescent cells, there is evidence to suggest that the quiescent state (in fibroblasts at least) is only attained by active suppression of terminal differentiation [46]. Quiescent cells are thought to be ‘poised’, ready to be activated [40] and it could be envisaged that this state is vital for progression of a tumour to a new site. It remains a question as to whether Brachyury is a pre-requisite for cancer cells to modify themselves prior to imposition of a quiescent-like state. Certainly our GO analysis are indicative of changes in genes associated with cell-cycle progression, DNA replication and RNA processing, in agreement with changes that might be observed in the quiescent stem cell signature [40]. Furthermore, the intriguing localization of Brachyury to the nucleolus suggests a role in rRNA processing and/or cell-cycle regulation.

The sub-cellular localization pattern of Brachyury within the carcinoma was complex, possibly reflecting a dynamic contribution to diverse functions in the cell, indeed, Brachyury was recently suggested to act as a master regulator in chordoma cells [10].

We note that not all cancer cells require Brachyury for proliferation, and, Brachyury may just confer ‘competence’ to cells to make ‘decisions’ of whether to proliferate or leave the cell-cycle and differentiate. We also carried out the ELDA assay with the *Brachyury*-

negative CRC cell line, HCT116, and did not observe reduced sphere forming frequencies with *Brachyury*-knockdown. This suggests that alternative mechanisms governing proliferation exist in different CRC cells. Interestingly, HCT116 cells appeared to be nullipotent in differentiation assays of CSCs [47] suggesting again, that the presence of Brachyury might be required to regulate the interface between proliferation and differentiation. In accordance, evidence also suggests that Brachyury is critical in controlling both cell differentiation and division during normal development of the notochord in ascidians [48].

Finally, we postulate that ‘fine tuning’ of Brachyury levels in a cell could be a mechanism for cancer cells to become resistant to chemotherapies: cells would be able to ‘drop out’ of proliferation and enter a quiescent-like state thereby avoiding genotoxic agents targeted at dividing cells. Then, when conditions allow, Brachyury would be ‘switched’ back on, conferring this same state of ‘competence’ and enabling its cancer promoting properties.

## MATERIALS AND METHODS

### Western Blot

These were carried out as in S9. Primary antibodies are listed in S9.

### Quantitative Real-time PCR

RNA was extracted using RNeasy Plus Mini Kit (Qiagen, #74136). First-strand cDNA synthesis used Quantitect Reverse Transcription kit (Qiagen, #205310). qRT-PCR was carried out using CFX96 Real-Time System C1000 Thermal Cycler (BioRad) with Quantifast SYBR green RT-PCR kit (Qiagen, #204154). The QuantiTect Primer Assay (Qiagen) was used for genes listed in S9.

### Cell Culture

SW480 cells (ECACC, cell line authentication report number 710236782) were cultured in DMEM medium (Life Technologies, #61965) supplemented with 10% fetal calf serum; H460 cells (ECACC, cell line authentication report number 710236782) were grown in RPMI medium (Life Technologies, #61870) supplemented with 10% fetal calf serum. Both cell lines have undergone 16 loci STR authentication (LGC Standards, UK).



## Transfection

Brachyury siRNA (Qiagen, SI04133521, SI00738255), p27Kip1 (Qiagen, SI02621990), cMYC (Qiagen, SI00300902) and negative control siRNA (Qiagen, 1027280) was used at a final concentration of 5 nM. Transfection was carried out with HiPerFect Reagent (Qiagen, 301705) according to the manufacturer's instructions.

## Colonsphere Formation Assay

Primary colonspheres were generated as previously described [33]. After 5-7 days the colonspheres were dissociated to a single cell suspension with Stem Pro Accutase (Life Technologies, A11105-01) and sub-cultured or used for further experiments.

## Extreme limiting dilution analysis

Extreme limiting dilution analysis (ELDA) was performed as described [34] and details are listed in S9.

## FACS

SW480 cells were transiently transfected with GFP-encoding Sure Silencing shRNA plasmid (Qiagen, KH02753) using Attractene Transfection Reagent (Qiagen, 301005). Target sequences for shRNA and FACS analysis is described in S9.

## Growth curve analysis

SW480 cells were plated at equivalent densities ( $1 \times 10^5$  cells/ml) in 6-well plates and allowed to attach. Transient transfection with shRNA was performed on the same day. A second shRNA treatment and media change was performed day 3 post-transfection. At daily intervals, cells were trypsinized, and 3 wells per condition were counted using Biorad's TC 20 automated cell counter with the trypan blue exclusion method.

## Immunohistochemistry (IHC)

Samples of human colon cancer were obtained from individuals undergoing colonic resection. IHC details are described in S9. Antigen retrieval and antibody dilutions are listed in S9.

## RNAseq

RNA isolation, quality control and details of RNAseq are described in S9. Fastq data underwent guided alignment to the human genome (NCBI Build 37.2) using Tophat v2.0.6 [35]. Read duplicates were removed using Picard (<http://picard.sourceforge.net/>) and counts/gene generated using HTSeq. Differential expression at the gene level was carried out using the Bioconductor package DESeq [36]. Pathway analysis was carried out on significantly differentially expressed genes using TopGO package (Bioconductor, <http://www.bioconductor.org/packages/2.12/bioc/html/topGO.html>).

## ACKNOWLEDGEMENT

J. Jezkova is supported by Cancer Research Wales, F.J. Hutchings is supported by Tenovus, J.S. Williams is supported by Coleg Cymraeg Cenedlaethol, J. Sammut holds a Welsh Clinical Academic Track fellowship award, S. Gollins is supported by the National Institute for Social care and Health Research Academic Health Science collaboration. R.McFarlane is funded by NWCRF (CR950) and Cancer Research Wales. We would like to thank Anthony Brooks at UCL Genomics and the Bioinformatics group at UCL Genetics Institute for the RNA-seq analysis and bioinformatics support. We would also like to thank Dr. Mark Lord and Dr. Anthony Caslin for assisting with IHC interpretation. Thanks to Natalia Gomez-Escobar for help with FACS analysis.

## Conflict of Interest statement

The authors declare that they have no conflict of interest.

## REFERENCES

1. Herrmann BG. Expression pattern of the Brachyury gene in whole-mount embryos mutant. *Development*. 1991;113(3):913–917.
2. Kavka AI, Green JB. Tales of tails: Brachyury and the T-box genes. *Biochim Biophys Acta*. 1997;1333(2):F73–84.
3. Pennimpede T, Proske J, König A, Vidigal J a, Morkel M, Bramsen JB, Herrmann BG, Wittler L. In vivo knockdown of Brachyury results in skeletal defects and urorectal malformations resembling caudal regression syndrome. *Dev Biol*. 2012;372(1):55–67.
4. Kilic N, Feldhaus S, Kilic E, Tennstedt P, Wicklein D, Wasielewski R Von, Viebahn C, Kreipe H, Schumacher U. Brachyury expression predicts poor prognosis at early stages of colorectal cancer. *Eur J Cancer*. 2011;47(7):1080–5.

5. Haro A, Yano T, Kohno M, Yoshida T, Koga T, Okamoto T, Takenoyama M, Maehara Y. Expression of Brachyury Gene Is a Significant Prognostic Factor for Primary Lung Carcinoma. *Ann Surg Oncol*. 2013;20:509–516.
6. Fernando RI, Litzinger M, Trono P, Hamilton DH, Schlom J, Palena C. The T-box transcription factor Brachyury promotes epithelial-mesenchymal transition in human tumor cells. *J Clin Invest*. 2010;120(2):533–544.
7. Huang B, Cohen JR, Fernando RI, Hamilton DH, Litzinger MT, Hodge JW, Palena C. The embryonic transcription factor Brachyury blocks cell cycle progression and mediates tumor resistance to conventional antitumor therapies. *Cell death Dis*. 2013;4(6):e682.
8. Sarkar D, Shields B, Davies ML, Müller J, Wakeman J a. BRACHYURY confers cancer stem cell characteristics on colorectal cancer cells. *Int J Cancer*. 2011;130(2):328–37.
9. Presneau N, Shalaby A, Ye H, Pillay N, Halai D, Idowu B, Tirabosco R, Whitwell D, Jacques TS, Kindblom L-G, Brüderlein S, Möller P, Leithner A, Liegl B, Amary FM, Athanasou NN, Hogendoorn PC, Mertens F, Suzhai K, Flanagan AM. Role of the transcription factor T (brachyury) in the pathogenesis of sporadic chordoma: a genetic and functional-based study. *J Pathol*. 2011;223(3):327–35.
10. Nelson AC, Pillay N, Henderson S, Presneau N, Tirabosco R, Halai D, Berisha F, Flicek P, Stemple DL, Stern CD, Wardle FC, Flanagan AM. An integrated functional genomics approach identifies the regulatory network directed by brachyury (T) in chordoma. *J Pathol*. 2012;228(3):274–85.
11. Cho MS, Chan IL, Flores ER.  $\Delta$ Np63 transcriptionally regulates brachyury, a gene with diverse roles in limb development, tumorigenesis and metastasis. *Cell Cycle*. 2010;9(12):2434–2441.
12. Denicourt C, Dowdy SF. Cip/Kip proteins: more than just CDKs inhibitors. *Genes Dev*. 2004;18(8):851–5.
13. Besson A, Dowdy SF, Roberts JM. CDK Inhibitors: Cell Cycle Regulators and Beyond. *Dev Cell*. 2008;14(2):159–169.
14. Larrea MD, Wander SA, Slingerland JM. p27 as Jekyll and Hyde: regulation of cell cycle and cell motility. *Cell cycle Georg Tex*. 2009;8(21):3455–3461.
15. Payne SR, Zhang S, Tsuchiya K, Moser R, Gurley KE, Longton G, DeBoer J, Kemp CJ. p27kip1 deficiency impairs G2/M arrest in response to DNA damage, leading to an increase in genetic instability. *Mol Cell Biol*. 2008;28(1):258–68.
16. Philipp-Staheli J, Kim K-H, Payne SR, Gurley KE, Liggitt D, Longton G, Kemp CJ. Pathway-specific tumor suppression. *Cancer Cell*. 2002;1(4):355–368.
17. Loda M, Cukor B, Tam SW, Lavin P, Fiorentine M, Draetta GF, Jessup JM, Pagano M. Increased proteasome-dependent degradation of the cyclin-dependent kinase inhibitor p27 in aggressive colorectal carcinomas. *Nat Med*. 1997;3(2):231–234.
18. Catzavelos C, Bhattacharya N, Ung YC, Wilson JA, Roncari L, Sandhu C, Shaw P, Yeger H, Morava-Protzner I, Kapusta L, Franssen E, Pritchard KI, Slingerland JM. Decreased levels of the cell-cycle inhibitor p27Kip1 protein: Prognostic implications in primary breast cancer. *Nat Med*. 1997;3(2):227–230.
19. Tsihlis J, Kapusta L, Slingerland J. The prognostic significance of altered cyclin-dependent kinase inhibitors in human cancer. *Annu Rev Med*. 1999;50:401–423.
20. Garrett-Engle CM, Tasch MA, Hwang HC, Fero ML, Perlmutter RM, Clurman BE, Roberts JM. A mechanism misregulating p27 in tumors discovered in a functional genomic screen. *PLoS Genet*. 2007;3(12):e219.
21. Chu IM, Hengst L, Slingerland JM. The Cdk inhibitor p27 in human cancer: prognostic potential and relevance to anticancer therapy. *Nat Rev Cancer*. 2008;8(4):253–67.
22. Besson A, Gurian-West M, Schmidt A, Hall A, Roberts JM. p27Kip1 modulates cell migration through the regulation of RhoA activation. *Genes Dev*. 2004;18(8):862–76.
23. Nagahara H, Vocero-Akbani AM, Snyder EL, Ho A, Latham DG, Lissy NA, Becker-Hapak M, Ezhevsky SA, Dowdy SF. Transduction of full-length TAT fusion proteins into mammalian cells: TAT-p27Kip1 induces cell migration. *Nat Med*. 1998;4(12):1449–52.
24. Baldassarre G, Belletti B, Nicoloso MS, Schiappacassi M, Vecchione A, Spessotto P, Morrione A, Canzonieri V, Colombatti A. p27(Kip1)-stathmin interaction influences sarcoma cell migration and invasion. *Cancer Cell*. 2005;7(1):51–63.
25. Muñoz-Alonso MJ, Acosta JC, Richard C, Delgado MD, Sedivy J, León J. p21Cip1 and p27Kip1 induce distinct cell cycle effects and differentiation programs in myeloid leukemia cells. *J Biol Chem*. 2005;280(18):18120–18129.
26. Vernon AE. The cdk inhibitor p27Xic1 is required for differentiation of primary neurones in *Xenopus*. *Development*. 2003;130(1):85–92.
27. Nguyen L. p27kip1 independently promotes neuronal differentiation and migration in the cerebral cortex. *Genes Dev*. 2006;20(11):1511–1524.
28. Gómez-Casares MT, García-Alegria E, López-Jorge CE, Ferrándiz N, Blanco R, Alvarez S, Vaqué JP, Bretones G, Caraballo JM, Sánchez-Bailón P, Delgado MD, Martín-Perez J, Cigudosa JC, León J. MYC antagonizes the differentiation induced by imatinib in chronic myeloid leukemia cells through downregulation of p27(KIP1). *Oncogene*. 2013;32(17):2239–46.
29. Bagui TK, Cui D, Roy S, Mohapatra S, Shor AC, Ma L, Pledger WJ. Inhibition of p27Kip1 gene transcription by mitogens. *Cell Cycle*. 2009;8(1):115–124.
30. Yang W, Shen J, Wu M, Arsura M, FitzGerald M, Suldan Z, Kim DW, Hofmann CS, Pianetti S, Romieu-Mourez R, Freedman LP, Sonenshein GE. Repression of transcription of the p27(Kip1) cyclin-dependent kinase inhibitor gene by c-Myc. *Oncogene*. 2001;20(14):1688–702.

31. Chandramohan V, Mineva ND, Burke B, Jeay S, Wu M, Shen J, Yang W, Hann SR, Sonenshein GE. c-Myc represses FOXO3a-mediated transcription of the gene encoding the p27(Kip1) cyclin dependent kinase inhibitor. *J Cell Biochem*. 2008;104(6):2091–106.
32. Eilers M, Eisenman RN. Myc's broad reach. *Genes Dev*. 2008;22(20):2755–2766.
33. Kanwar SS, Yu Y, Nautiyal J, Patel BB, Majumdar APN. The Wnt/beta-catenin pathway regulates growth and maintenance of colonospheres. *Mol Cancer*. 2010;9:212.
34. Hu Y, Smyth GK. ELDA: extreme limiting dilution analysis for comparing depleted and enriched populations in stem cell and other assays. *J Immunol Methods*. 2009;347(1-2):70–8.
35. Kim D, Pertea G, Trapnell C, Pimentel H, Kelley R, Salzberg SL. TopHat2: accurate alignment of transcriptomes in the presence of insertions, deletions and gene fusions. *Genome Biol*. 2013;14(4):R36.
36. Anders S, Huber W. Differential expression analysis for sequence count data. *Genome Biol*. 2010;11(10):R106.
37. Bouchard C, Thieke K, Maier A, Saffrich R, Hanley-Hyde J, Ansorge W, Reed S, Sicinski P, Bartek J, Eilers M. Direct induction of cyclin D2 by Myc contributes to cell cycle progression and sequestration of p27. *EMBO J*. 1999;18(19):5321–33.
38. Stevaux O, Dyson NJ. A revised picture of the E2F transcriptional network and RB function. *Curr Opin Cell Biol*. 2002;14(6):684–691.
39. Menchón C, Edel MJ, Belmonte JCI. The cell cycle inhibitor p27Kip1 controls self-renewal and pluripotency of human embryonic stem cells by regulating the cell cycle, Brachyury and Twist. *Cell Cycle*. 2011;10(9):1435–1447.
40. Cheung TH, Rando TA. Molecular regulation of stem cell quiescence. *Nat Rev Mol Cell Biol*. 2013;14(6):329–40.
41. Quin JE, Devlin JR, Cameron D, Hannan KM, Pearson RB, Hannan RD. Targeting the nucleolus for cancer intervention. *Biochim Biophys Acta*. [published online ahead of print: January 2, 2014]; doi:10.1016/j.bbadis.2013.12.009
42. Acosta JC, Ferrándiz N, Bretones G, Torrano V, Blanco R, Richard C, O'Connell B, Sedivy J, Delgado MD, León J. Myc inhibits p27-induced erythroid differentiation of leukemia cells by repressing erythroid master genes without reversing p27-mediated cell cycle arrest. *Mol Cell Biol*. 2008;28(24):7286–95.
43. Lolas M, Valenzuela PDT, Tjian R, Liu Z. Charting Brachyury-mediated developmental pathways during early mouse embryogenesis. *Proc Natl Acad Sci U S A*. 2014;111(12):4478–83.
44. Buttitta LA, Edgar BA. Mechanisms controlling cell cycle exit upon terminal differentiation. *Curr Opin Cell Biol*. 2007;19(6):697–704.
45. Khattar E, Kumar V. Mitogenic regulation of p27(Kip1) gene is mediated by AP-1 transcription factors. *J Biol Chem*. 2010;285(7):4554–61.
46. Coller HA, Sang L, Roberts JM. A new description of cellular quiescence. *PLoS Biol*. 2006;4(3):e83.
47. Yeung TM, Gandhi SC, Wilding JL, Muschel R, Bodmer WF. Cancer stem cells from colorectal cancer-derived cell lines. *Proc Natl Acad Sci U S A*. 2010;107(8):3722–7.
48. Fujikawa T, Takatori N, Kuwajima M, Kim GJ, Nishida H. Tissue-specific regulation of the number of cell division rounds by inductive cell interaction and transcription factors during ascidian embryogenesis. *Dev Biol*. 2011;355(2):313–23.